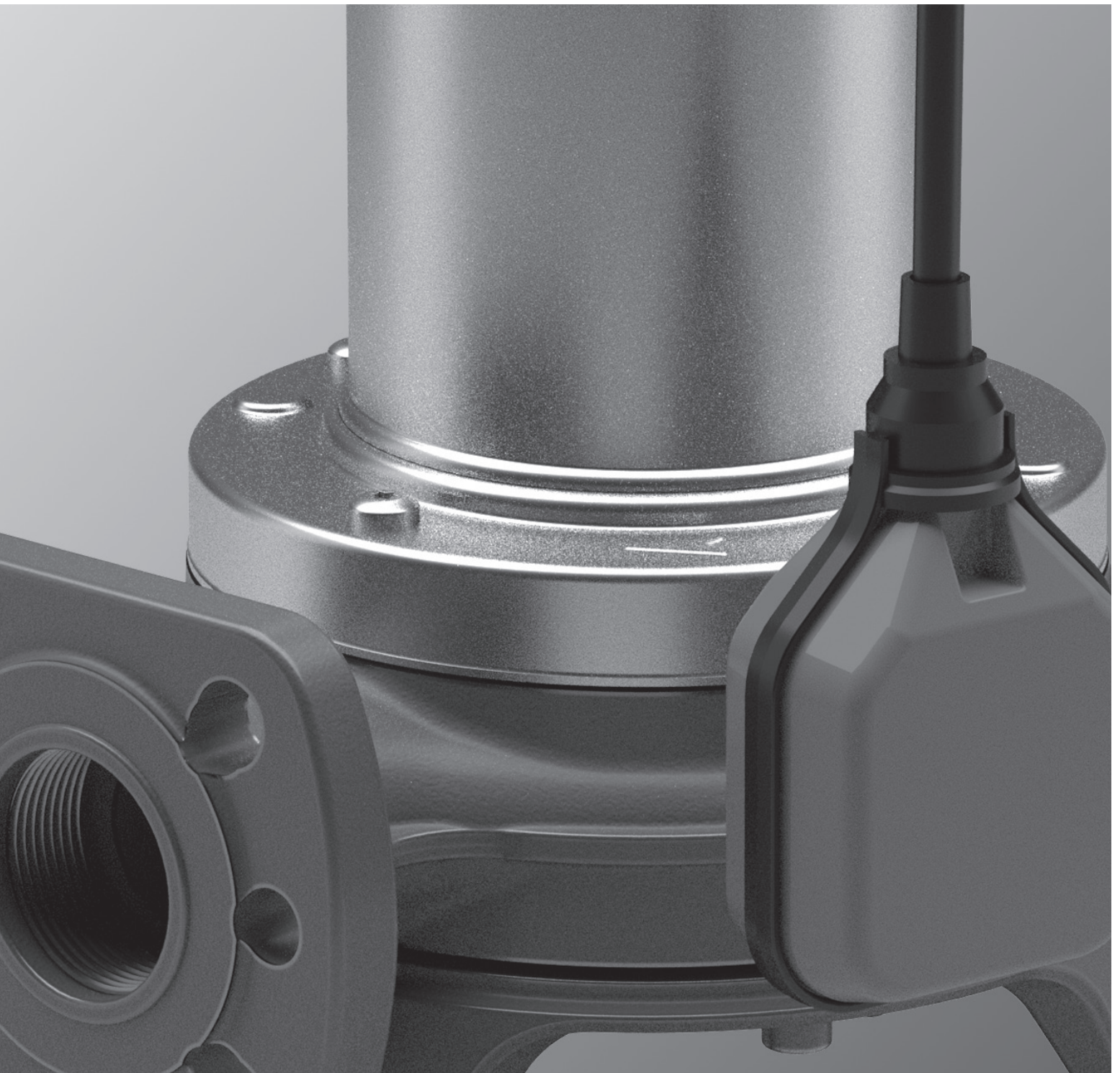


FEKA VS GRINDER

SUBMERSIBLE PUMPS WITH SHREDDER FOR SEWAGE



FEKA VS GRINDER

SUBMERSIBLE PUMP



TECHNICAL DATA

Flow rate: from 0 m³h to 14,4 m³h
Head: 25 m
Pumped liquid: sewage water, gray water
Free passage: n/a
Liquid temperature: from 0°C to +40°C for domestic use
Outlet: 1" 1/2 GAS - DN 32 and DN 40
Outlet direction: horizontal and vertical with curve kit accessory
Impeller: vortex in cast iron, there is a shredder
Motor protection degree: IP 68
Thermal classification of the motor insulation: F
Power cable type: H07RN8-F
Possible type of installation: fixed or mobile in vertical position
Maximum immersion depth: 7 meters

Submersible pump for draining sewage water in commercial building service. It is certified for the European Union standard EN 12050-1 which applies to sewage lifting containing fecal material in buildings and construction sites. Pump suitable for fixed installations with a coupling or mobile if placed directly on the bottom of the tank. High-performance super Vortex impeller with full solid handle. The pump is suitable for liquid with solids and long fibers in suspension. The reduced overall dimensions and the outlet ports both flanged and threaded make it ideal for replacements. Designed for quick maintenance thanks to a constructive solution that provides easy access to the main components of the pump. Automatic versions with power up to 1,5 kW. ATEX version available for use in potentially explosive environments. (ATEX certifications: II2G Ex db k IIB T4 or IEC EX: Ex db IIB T4 Gb).

CONSTRUCTION FEATURES OF THE PUMP

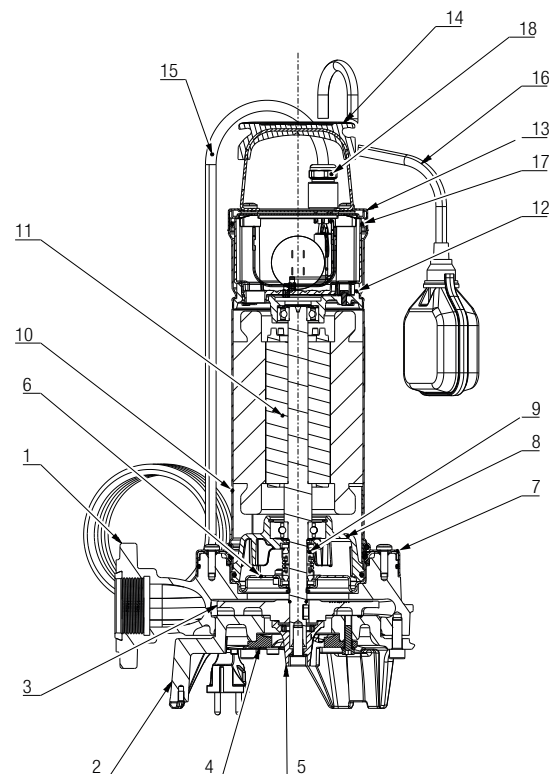
Cast iron pump body and impeller. Motor shaft in AISI 431 stainless steel for P2 < 1,2 kW and AISI 304 for P2 > 1,5 kW. Double mechanical SiC-SiC / C-Al seal in oil chamber not in contact with the pumped liquid, independent of the direction of rotation. Outlet port both flanged and threaded.

CONSTRUCTION FEATURES OF THE MOTOR

Available in single-phase asynchronous motor (MA / MNA versions) and three-phase motor (TNA versions). Rotor mounted on lubricated bearings. Continuous operation in S1 with the motor completely immersed. Dry running for a maximum time of 10 minutes. Over-temperature sensors in the motor windings with intervention threshold at +130°C. Quick-bonded resin-bonded cable gland, H07RN8-F power cable. Single-phase versions with integrated capacitor, available with float for automatic operation (MA) with powers up to 1,5 kW. In the three-phase versions the protection is the user's responsibility.

MATERIALS

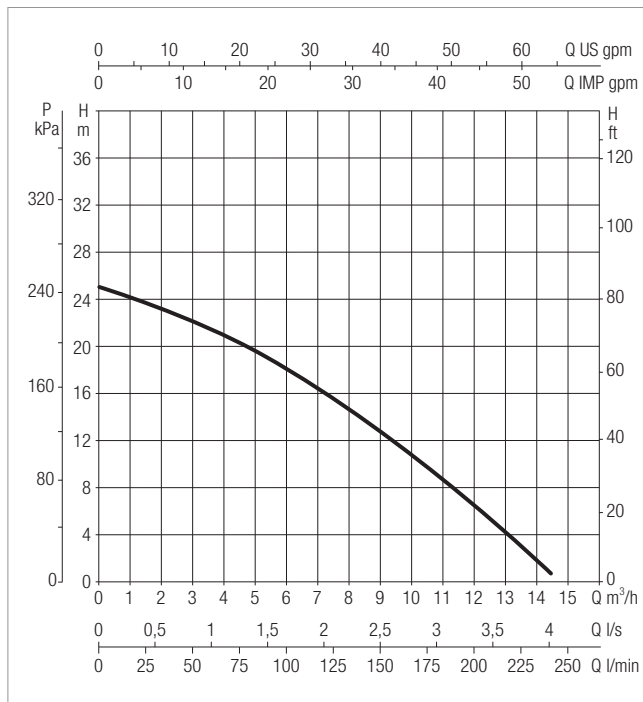
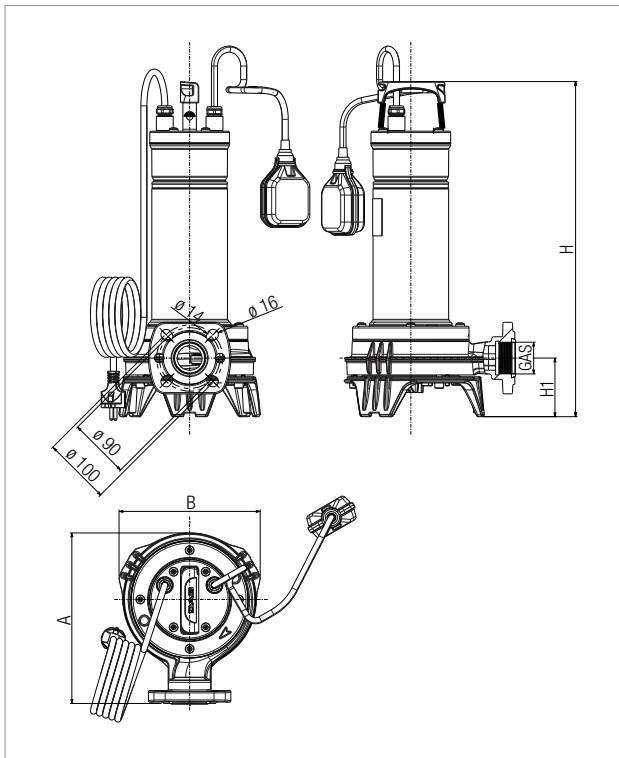
N°	PARTS*	MATERIALS
1	PUMP HOUSING	CAST IRON
2	PUMP BASE	CAST IRON
3	IMPELLER	CAST IRON
4	CUTTER BASE	STAINLESS STEEL
5	CUTTER	STAINLESS STEEL
6	SHAFT SEAL DISC	STAINLESS STEEL
7	MOTOR CONNECTION FLANGE	STAINLESS STEEL
8	LOWER BEARING SUPPORT	ALUMINUM
9	DOUBLE MECHANICAL SEAL	PUMP SIDE: SIC/SIC
		MOTOR SIDE: CARBON / ALUMINA
10	MOTOR CASE	STAINLESS STEEL
11	MOTOR SHAFT	STAINLESS STEEL
12	UPPER BEARING SUPPORT	ALUMINUM
13	COVER CONNECTION	STAINLESS STEEL
14	HANDLE	STAINLESS STEEL AND INSULATING RUBBER
15	SUPPLY CABLE	H07RN8-F
16	FLOAT SWITCH CABLE	H07RN8-F
17	O-RINGS	NBR
18	CABLE GLAND	NICHEL-PLATED BRASS



* In contact with the liquid

FEKA VS GRINDER - SUBMERSIBLE PUMPS WITH SHREDDER FOR SEWAGE

Liquid temperature range: from 0°C a +40°C for domestic use.



The performance curves are based on kinematic viscosity values = 1 mm²/s and density equal to 1000 kg/m³. Curve tolerance according to ISO 9906.

PERFORMANCE AT 50 HZ

MODEL	HYDRAULIC DATA										
	Q=m³/h	0	2	4	6	8	9	10	11	12	14
	Q=l/min	0	34	66	100	135	150	168	180	200	240
FEKA VS GRINDER 1000 MA	H (m)	25	23	21	18	14,5	12,8	10,5	9	6,5	0,67
FEKA VS GRINDER 1000 M-NA		25	23	21	18	14,5	12,8	10,5	9	6,5	0,67
FEKA VS GRINDER 1000 TNA		25	23	21	18	14,5	12,8	10,5	9	6,5	0,67

ELECTRICAL DATA

MODEL	ELECTRICAL DATA							
	POWER INPUT 50 Hz	P1 MAX W	P2 NOMINAL		In A	Ist A	CAPACITOR	
			kW	HP			µF	Vc
FEKA VS GRINDER 1000 MA	220 x 240V	1,3	1	1,3	6,4 A	29,9	35	450
FEKA VS GRINDER 1000 M-NA	220 x 240V	1,3	1	1,3	6,2 A	29,9	35	450
FEKA VS GRINDER 1000 TNA	380 x 415V	1,3	1	1,3	3 A	19,8	-	-

DIMENSIONAL DATA

MODEL	A	B	H	H1	GAS	DN1	HOLES	PACKING DIMENSIONS			VOLUME (mc)	WEIGHT Kg
								L/A	L/B	H		
FEKA VS GRINDER 550	253	209	496	87	Rp 1" 1/2	DN32 PN10 / 6 DN40 PNG	4 2	290	230	560	0,037	23
FEKA VS GRINDER 750	253	209	496	87	Rp 1" 1/2	DN32 PN10 / 6 DN40 PNG	4 2	290	230	560	0,037	23
FEKA VS GRINDER 1000	253	209	496	87	Rp 1" 1/2	DN32 PN10 / 6 DN40 PNG	4 2	290	230	560	0,037	23

DNA[®]

PUMPS SELECTOR



On-line product selection



DAB PUMPS LTD.

6 Gilbert Court
Newcomen Way
Severalls Business Park
Colchester
Essex
CO4 9WN - UK
salesuk@dwgroup.com
Tel. +44 0333 777 5010



DAB PUMPS IBERICA S.L.

Calle Verano 18-20-22
28850 - Torrejón de Ardoz - Madrid
Spain
Info.spain@dwgroup.com
Tel. +34 91 6569545
Fax: + 34 91 6569676



DAB PUMPS (QINGDAO) CO. LTD.

No.40 Kaituo Road, Qingdao Economic
& Technological
Development Zone
Qingdao City, Shandong Province - China
PC: 266500
sales.cn@dwgroup.com
Tel. +86 400 186 8280
Fax +86 53286812210



DAB PUMPS BV

*Hofveld 6 C1
1702 Groot Bijgaarden - Belgium
info.belgium@dwgroup.com
Tel. +32 2 4668353



DAB PUMPS HUNGARY KFT.

H-8800
Nagykanizsa, Buda Erő u.5
Hungary
Tel. +36 93501700



DAB PUMPS DE MÉXICO, S.A. DE C.V.

Av Amsterdam 101 Local 4
Col. Hipódromo Condesa,
Del. Cuauhtémoc CP 06170
Ciudad de México
Tel. +52 55 6719 0493



DAB PUMPS POLAND Sp. z o.o.

Ul. Janka Muzykanta 60
02188 Warszawa - Poland
polska@dabpumps.com.pl



DAB PUMPS OCEANIA PTY LTD

426 South Gippsland Highway,
Dandenong South VIC 3175 - Australia
info.oceania@dwgroup.com
Tel. +61 1300 378 677



DAB PUMPS B.V.

Albert Einsteinweg, 4
5151 DL Drunen - Nederland
info.netherlands@dwgroup.com
Tel. +31 416 387280
Fax +31 416 387299



DAB PUMPS INC.

3226 Benchmark Drive
Ladson, SC 29456 - USA
info.usa@dwgroup.com
Tel. 1 - 843-797-5002
Fax 1-843-797-3366



DAB PUMPS GMBH

Am Nordpark 3
D - 41069 Mönchengladbach - Germany
info.germany@dwgroup.com
Tel. +49 2161 47388-0
Fax +49 2161 47388-36



DAB PUMPS SOUTH AFRICA (PTY) LTD

Twenty One industrial Estate,
16 Purlin Street, Unit B, Warehouse 4
Olifantsfontein - 1667 - South Africa
info.sa@dwgroup.com
Tel. +27 12 361 3997



PT DAB PUMPS INDONESIA

Satrio Tower lantai 26
unit C-D, Jl. Prof. Dr. Satrio Kav. C4,
Kel. Kuningan Timur, Kec. Setiabudi, Kota Adm.
Jakarta Selatan, Prov. DKI Jakarta. - Indonesia
Tel. +62 2129222850