

CM, CM-G / DCM, DCM-G

IN-LINE PUMPS



TECHNICAL DATA

Operating range: from 4,2 m³/h to 420 m³/h

Head: 41m

Pumped liquid: clean, free of solids and abrasives, non-viscous, non-aggressive, non-crystallised and chemically neutral, with properties similar to water.

Glycol percentage: 30%

Liquid temperature (range): from -10°C to +140°C

Maximum ambient temperature: +40 °C

Maximum operating pressure: 16 bar / 1600 kPa

Flanging or threading: flanging: DN 65, 80, 100, 125, 150 with PN 10, 16

Motor protection class: IP 55

Motor insulation class: class F

Impeller material: Cast iron or technopolymer impeller depending on model

Single phase power input: contact sales network

Three phase power input: 3x230 V 50 Hz / 3x400 V 50 Hz

Type of installation: Fixed in horizontal or vertical position with motor in up position. Only in vertical position for motor from 7,5 kW.

Special executions on request: contact sales network

CM, CM-G / DCM, DCM-G are in-line pumps designed for recirculation of water in civil and commercial applications in air-conditioning and heating systems, also in the presence of solar collectors, and for circulation of domestic hot water. The letter D indicates twin versions.

CONSTRUCTION FEATURES OF THE PUMP

Flanged suction and delivery ports with threaded connectors for control gauges. Cast iron pump casing and motor support. Stainless steel motor shaft. Cast iron or technopolymer impeller depending on model.

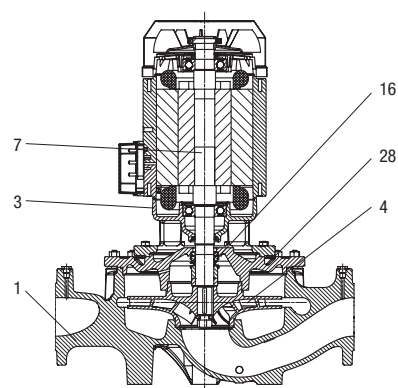
CONSTRUCTION FEATURES OF THE MOTOR

Three-phase four-pole asynchronous air-cooled motor.

MATERIALS

N.	PARTS*	MATERIALS
1	PUMP BODY	CAST IRON 250 UNI ISO 185
3	SUPPORT	CAST IRON 250 UNI ISO 185
4	IMPELLER	CAST IRON
7	SHAFT WITH ROTOR	AISI 304 STAINLESS STEEL X5 CrNiS 1809 UNI 6900/71
16	MECHANICAL SEAL	CARBON/GRAPHITE
28	OR RING	EPDM RUBBER

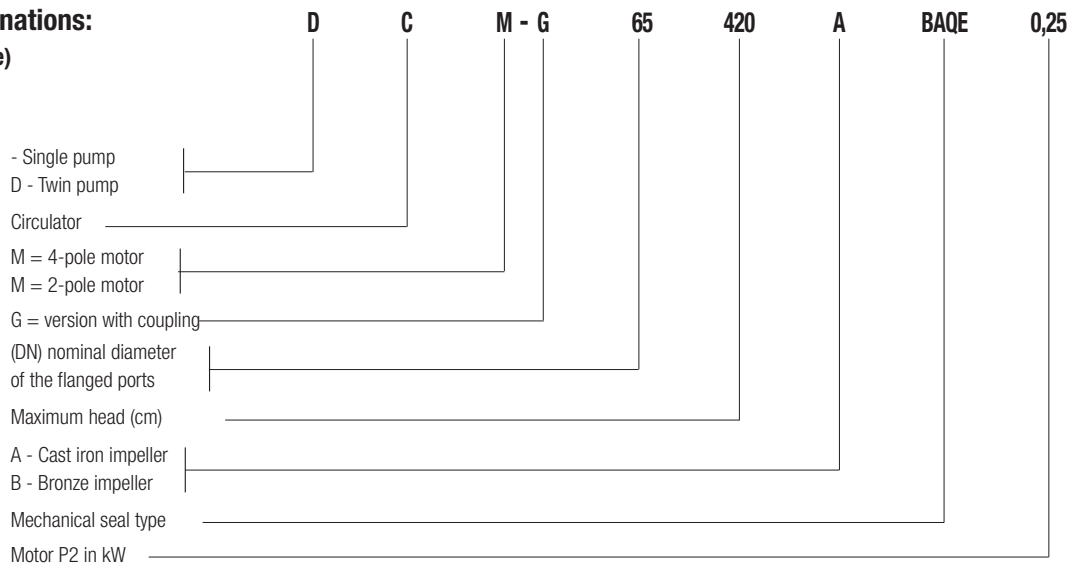
* In contact with the liquid



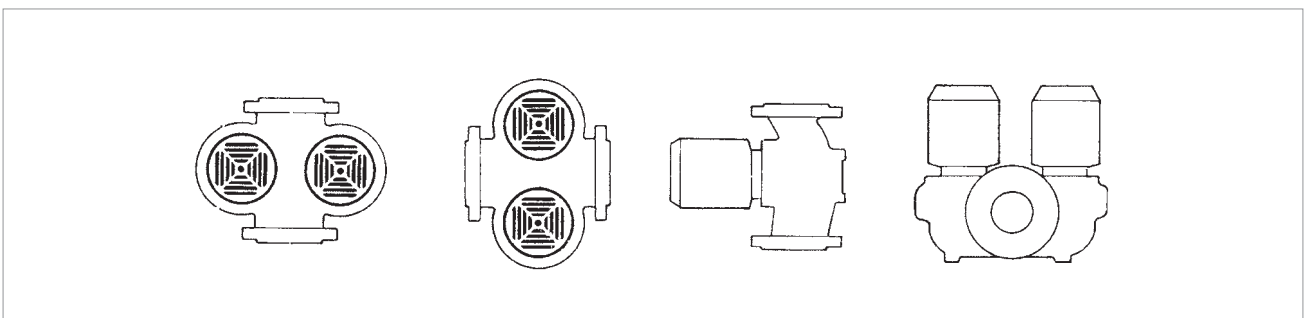
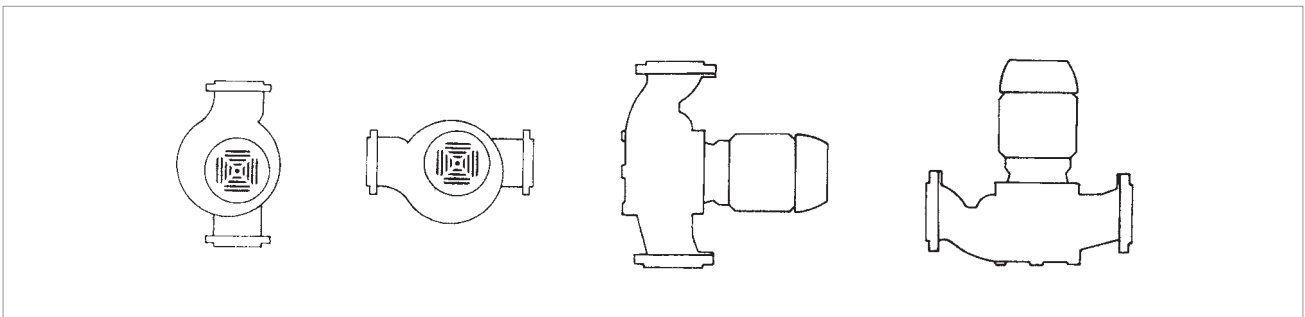
CM, CM-G / DCM, DCM-G

IN-LINE PUMPS

- Denominations:
(example)



Installation: horizontal or vertical position, provided that the motor is always above the pump.
Vertical installation only for powers exceeding 7,5 kW.



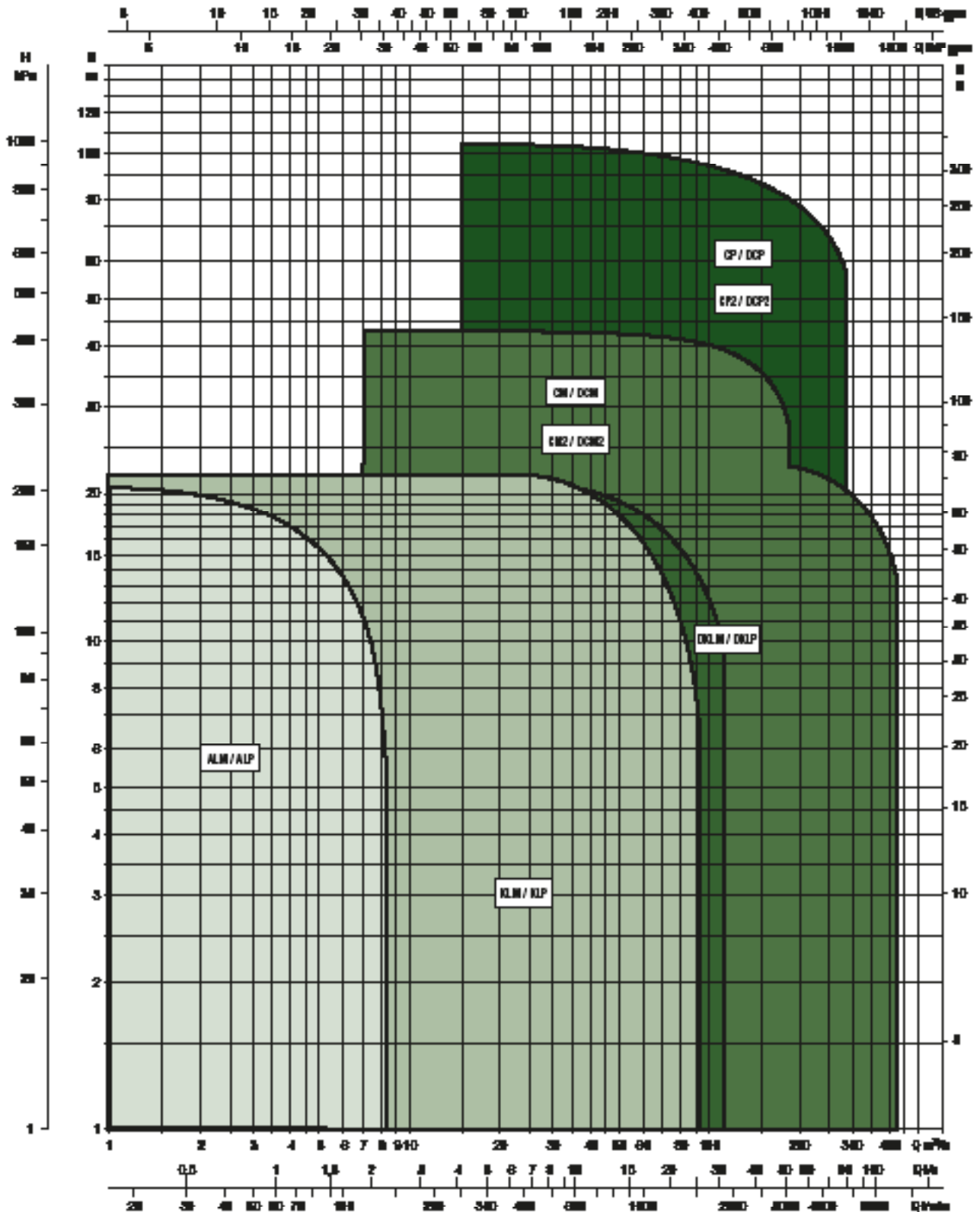
IN-LINE PUMPS

FOR CIRCULATION SYSTEMS

PERFORMANCE RANGE

The performance curves are based on kinematic viscosity values = 1 mm²/s and density equal to 1000 kg/m³. Curve tolerance according to ISO 9906.

GRAPHIC SELECTION TABLE



CM, CM-G / DCM, DCM-G

IN-LINE PUMPS

SELECTION TABLE - CM / CM-G - 4 POLES

MODEL	Q=m ³ h	0	1,2	2,4	3	3,6	4,8	6	12	18	24	30	36	42	48		
	Q=l/min	0	20	40	50	60	80	100	200	300	400	500	600	700	800		
CM-G 65-420/A/BAQE/0,25	H (m)	4,2						4,1	3,7	3	2,1						
CM-G 65-540/A/BAQE/0,37		5,4							5,3	5	4,4	3,5					
CM-G 65-660/A/BAQE/0,55		6,6							6,5	6,2	5,7	4,8					
CM-G 65-760/A/BAQE/0,55		7,6							7,7	7,6	6,7	5,5					
CM-G 65-920/A/BAQE/0,75		9,2							9,2	9	8,4	7,4	5,7				
CM-G 65-1080/A/BAQE/1,1		10,8								10,8	10,6	10,2	9,5	8,6	7,3		
CM-G 65-1200/A/BAQE/1,5		12								12	11,9	11,5	10,8	10,1	8,9		
CM-G 65-1530/A/BAQE/2,2		15,3								15,3	15,2	14,8	14	13,3	12,1	10,8	
CM-G 65-1680/A/BAQE/3		16,8								16,8	16,5	16,1	15,5	14,6	13,6	12,4	
CM-G 65-2380/A/BAQE/4		23,8								24	23,8	23,4	22,7	21,6	20,4	19	

MODEL	Q=m ³ h	0	12	18	24	30	36	42	48	60	72	84	90	102	114	120	150	180		
	Q=l/min	0	200	300	400	500	600	700	800	1000	1200	1400	1500	1700	1900	2000	2500	3000		
CM-G 80-550/A/BAQE/0,55	H (m)	5,5	5,2	5	4,7	4,3	3,9	3,3	2,6											
CM-G 80-650/A/BAQE/0,75		6,5	6,3	6,1	5,8	5,5	5	4,5	3,9											
CM-G 80-740/A/BAQE/1,1		7,4	7,4	7,3	7,2	6,9	6,7	6,3	5,8	4,4										
CM-G 80-890/A/BAQE/1,5		8,9		8,8	8,7	8,6	8,3	8	7,6	6,6										
CM-G 80-1050/A/BAQE/2,2		10,5			10,4	10,3	10,2	9,9	9,6	8,8										
CM-G 80-1530/A/BAQE/3		15,3			15,4	15,3	15	14,6	14,1	12,9	11,3									
CM-G 80-1700/A/BAQE/4		17			17,2	17,2	17,1	16,8	16,5	15,7	14,3	12,6								
CM-G 80-2410/A/BAQE/5,5		24,1			23,8	23,6	23,3	22,8	22,3	20,8	18,6									
CM-G 80-2700/A/BAQE/7,5		27						26	25,5	24,5	22,7	20,2	19							
CM-G 80-3420/A/BAQE/11		34,2						33,2	33	32	30,7	29	28	25	21,7					

CM, CM-G / DCM, DCM-G

IN-LINE PUMPS

SELECTION TABLE - CM / CM-G - 4 POLES

MODEL	Q=m ³ h	0	12	18	24	30	36	42	48	60	72	84	90	102	114	120	150	180	
	Q=l/min	0	200	300	400	500	600	700	800	1000	1200	1400	1500	1700	1900	2000	2500	3000	
CM-G 100-510/ A/BAQE/0,75	H (m)	5,1	4,9	4,8	4,7	4,7	4,4	4,2	3,8	3									
CM-G 100-650/A/BAQE/1,1		6,5	6,4	6,4	6,3	6,2	6	5,8	5,5	4,6									
CM-G 100-660/A/BAQE/1,5		6,6				6,4	6,3	6,2	6	5,6	5	4,5	4,3	3,7	3				
CM-G 100-865/A/BAQE/2,2		8,6				8,5	8,5	8,3	8,2	7,7	7,2	6,7	6,3	5,7	4,9	4,6			
CM-G 100-1020/A/BAQE/3		10,2				10,2	10,1	10	9,9	9,7	9,3	8,8	8,6	7,9	7,2	6,7			
CM-G 100-1320/A/BAQE/4		13,2							13,2	13,2	12,9	12,4	11,7	11,3	10,4	9,3	8,7		
CM-G 100-1650/ A/BAQE/5,5		16,5							16,6	16,5	16,2	16	15,4	15	14,3	13,3	12,7		
CM-G 100-2050/ A/BAQE/7,5		20,5							21	21	20,7	20	19,5	19	18	16,7	16		
CM-G 100-2550/A/BAQE/11		25,5							25,5	25,5	25,1	25	24,2	24	23	21,5	21		
CM-G 100-3290/A/BAQE/15		32,9									33	32,8	32	31,6	30,5	29,5	28,9	24	
CM-G 100-3680/ A/BAQE/18,5		36,8									37	36,8	36,5	36,1	35,5	34,5	34	29,5	
CM-G 100-4100/A/BAQE/22		41									41,4	41	40,6	40,5	39,8	39	38,5	34,8	29

MODEL	Q=m ³ h	0	60	72	84	90	102	114	120	150	180	210
	Q=l/min	0	1000	1200	1400	1500	1700	1900	2000	2500	3000	3500
CM-G 125-1075/A/BAQE/4	H (m)	10,8	10,1	10	9,7	9,5	9,1	8,5	8,3	7	5,4	
CM-G 125-1270/ A/BAQE/5,5		12,7	12,6	12,5	12,4	12,3	12	11,5	11,4	10,1	8,5	
CM-G 125-1560/ A/BAQE/7,5		15,6	15,4	15,3	15,1	15	14,7	14,5	14,3	13,3	11,6	9,8
CM-G 125-2100/ A/BAQE/11		21	21,5	21,5	21,2	21	20,9	20	19,8	18	16	
CM-G 125-2550/ A/BAQE/15		25,5	25,5	25,5	25,1	25,1	25	24,5	24	22,5	20,5	17,5
CM-G 125-3200/ A/BAQE/18,5		32			31,5	31,4	31	30,5	28,8	26	23	
CM-G 125-3600/ A/BAQE/22		36			35,5	35,2	35	34,6	33,2	31	28	24
CM-G 125-4022/ A/BAQE/30		40,2			39,7	39,3	39,1	38,7	37,1	34,6	31,3	26,8

MODEL	Q=m ³ h	0	84	90	102	114	120	150	180	210	250	300	360	390	420
	Q=l/min	0	1400	1500	1700	1900	2000	2500	3000	3500	4167	5000	6000	6500	7000
CM-G 150-955/A/BAQE/5,5	H (m)	9,6		9,6	9,6	9,4	9,3	8,7	7,8	6,7	5,5				
CM-G 150-1322/A/BAQE/7,5		13,2		13	12,8	12,6	12,5	11,9	11,1	10,1	8,5				
CM-G 150-1600/A/BAQE/11		16			15,5	15,5	15,4	14,8	14	13	11	9,2			
CM-G 150-1950/A/BAQE/15		19,5			19,5	19,4	19,3	19,2	18,7	17,8	16	14,1	10,9		
CM-G 150-2200/A/BAQE/18,5		22			22	21,9	21,8	21,7	21,4	20,5	19	17,2	14	12	
CM-G 150-2405/A/BAQE/22		24,1			23,9	23,9	23,8	23,6	23,2	22,7	21,8	20,2	17,5	15,6	14

CM, CM-G / DCM, DCM-G

IN-LINE PUMPS

SELECTION TABLE - DCM / DCM-G - 4 POLES

MODEL	Q=m ³ h	0	6	12	18	24	30	36	42	48	54
	Q=l/min	0	100	200	300	400	500	600	700	800	900
DCM-G 65-420/A/BAQE/0,25	H (m)	4,2	3,5	2,7	1,7	0,5					
DCM-G 65-540/A/BAQE/0,37		5,4	5,2	4,4	3,3	1,6					
DCM-G 65-660/A/BAQE/0,55		6,5	6,4	5,6	4,4	2,6					
DCM-G 65-760/A/BAQE/0,55		7,5	7,6	6,9	5,4	3,1					
DCM-G 65-920/A/BAQE/0,75		9,1	9,1	8,6	7,5	5,8	3,8				
DCM-G 65-1080/A/BAQE/1,1		10,8		10,7	10,4	9,7	8,8	7,7	6,2		
DCM-G 65-1200/A/BAQE/1,5		12		11,9	11,6	11	10	9	7,6		
DCM-G 65-1530/A/BAQE/2,2		15,3		15,2	15	14,4	13,4	12,5	11	9,5	8
DCM-G 65-1680/A/BAQE/3		16,8		16,7	16,3	15,7	14,9	13,7	12,4	11	9,3
DCM-G 65-2380/A/BAQE/4		23,8		23,9	23,5	22,8	21,8	20,3	18,6	16,8	14,5

MODEL	Q=m ³ h	0	12	18	24	30	36	42	48	54	60	66	72	78	84	90	102	114
	Q=l/min	0	200	300	400	500	600	700	800	900	1000	1100	1200	1300	1400	1500	1700	1900
DCM-G 80-550/A/BAQE/0,55	H (m)	5,5	5,1	4,7	4,1	3,4	2,6	1,9	1,1									
DCM-G 80-650/A/BAQE/0,75		6,5	6,2	5,8	5,2	4,5	3,7	2,9	2,1									
DCM-G 80-740/A/BAQE/1,1		7,1			6,8	6,3	5,9	5,1	4,3	3,5	2,5							
DCM-G 80-890/A/BAQE/1,5		8,5			8,3	8,0	7,5	6,8	6,1	5,3	4,4	3,5						
DCM-G 80-1050/A/BAQE/2,2		10,1			10,1	9,9	9,5	9,0	8,4	7,7	6,9			3,8				
DCM-G 80-1530/A/BAQE/3		14,4			14,1	13,7	13,0	12,2	11,3	10,2	9,2	8,0	6,8					
DCM-G 80-1700/A/BAQE/4		16,0			15,7	15,5	15,3	14,6	14,0	13,2	12,3	11,2	10,0	8,9	7,7			
DCM-G 80-2410/A/BAQE/5,5		24,1					23,3	22,7	22,0	21,1	20,2	18,9	17,6	16,2				
DCM-G 80-2700/A/BAQE/7,5		27,0					26,1	26,1	25,5	24,9	24,2	23,2	22,1	20,7	19,3	17,9		
DCM-G 80-3420/A/BAQE/11		34,2					33,3	33,3	32,9	32,3	31,8	30,9	29,9	29,0	27,8	24,4	22,0	20,8

CM, CM-G / DCM, DCM-G

IN-LINE PUMPS

SELECTION TABLE - DCM-G - 4 POLES

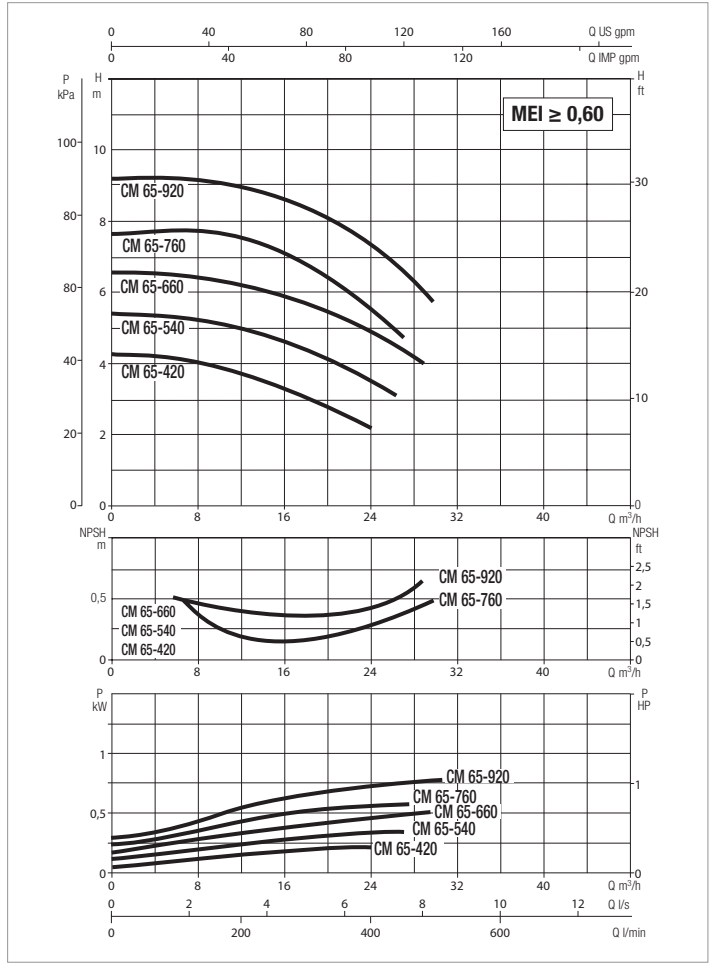
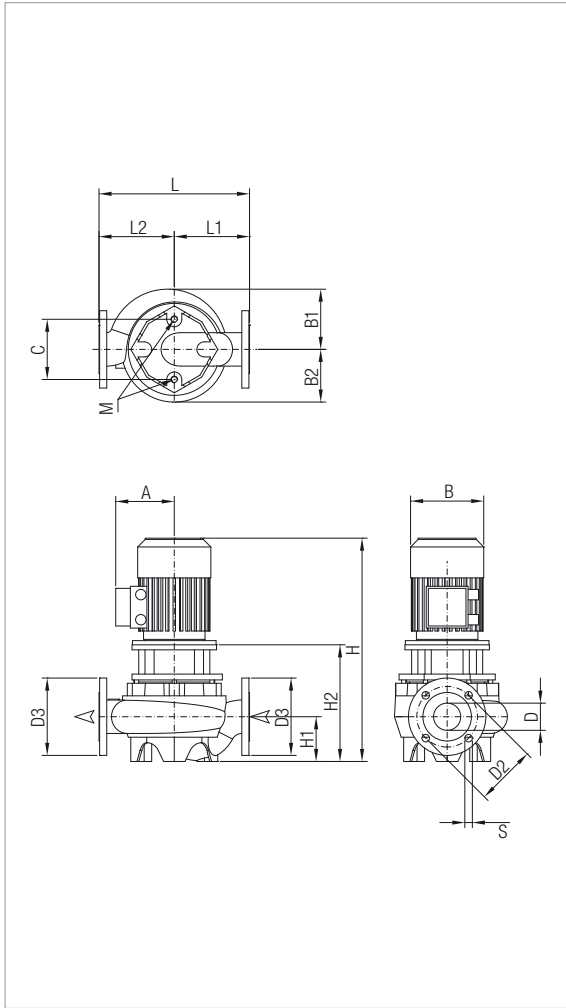
MODEL	Q=m ³ h	0	12	18	24	30	36	42	48	54	60	66	72	78	84	90	102	114	120	150	180	
	Q=l/min	0	200	300	400	500	600	700	800	900	1000	1100	1200	1300	1400	1500	1700	1900	2000	2500	3000	
DCM-G 100-510/A/BAQE/0,75	H (m)	4,9	4,8	4,7	4,6	4,5	4	3,7	3,2	2,6	2,1											
DCM-G 100-650/A/BAQE/1,1		6,3	6,3	6,3	6,1	5,9	5,5	5,1	4,6	4	3,3											
DCM-G 100-660/A/BAQE/1,5		6,6				6,4	6,2	6	5,8	5,6	5,3	4,9	4,5	4,1	3,7	3,4	2,6	1,8				
DCM-G 100-865/A/BAQE/2,2		8,6				8,5	8,4	8,1	8	7,7	7,4	7	6,6	6,1	5,7	5,2	4,2	3,2	2,8			
DCM-G 100-1020/A/BAQE/3		10,2				10,2	10	9,8	9,6	9,5	9,3	8,9	8,5	8	7,5	7,1	5,9	4,7	4			
DCM-G 100-1320/A/BAQE/4		13,2						13,2	13,1	13	12,8	12,4	11,9	11,3	10,8	10,2	8,8	7,4	6,6			
DCM-G 100-1650/A/BAQE/5,5		16,5						16,5	16,4	16,3	16	15,8	15,5	14,9	14,4	13,7	12,4	10,8	10			
DCM-G 100-2050/A/BAQE/7,5		19,3								19,2	18,8	18,5	17,9	17,6	17,2	16,6	15,5	14,1	13,3			
DCM-G 100-2550/A/BAQE/11		24								23,3	22,8	22,6	22,4	21,9	21,4	21	19,8	18,1	17,5			
DCM-G 100-3290/A/BAQE/15		30,9								30,5	30,3	30,1	29,9	29,4	28,8	28,3	27	25,8	25,1	20		
DCM-G 100-3680/A/BAQE/18,5		34,6								34,2	34	33,7	33,5	33,1	32,9	32,4	31,5	30,2	29,5	24,5		
DCM-G 100-4100/A/BAQE/22		41								41,4	41,4	41,2	41	40,8	40,6	40,5	39,8	39	38,5	34,8	29	

MODEL	Q=m ³ h	0	60	66	72	78	84	90	102	114	120	150	180	210	
	Q=l/min	0	1000	1100	1200	1300	1400	1500	1700	1900	2000	2500	3000	3500	
DCM-G 125-1075/A/ BAQE/4	H (m)	10	9,5	9,4	9,2	9	8,7	8,4	7,7	6,8	6,5	4,4	2,4		
DCM-G 125-1270/A/ BAQE/5,5		11,7	11,8	11,7	11,5	11,4	11,1	10,8	10,2	9,2	8,9	6,4	3,8		
DCM-G 125-1560/A/ BAQE/7,5		14,4	14,6	14,6	14,4	14,2	14	13,8	13,2	12,7	12,3	10,2	7,5	4,9	
DCM-G 125-2100/A/ BAQE/11		20,1						19,9	19,6	19,3	18,2	17,8	15,4	12,7	
DCM-G 125-2550/A/ BAQE/15		24,5						23,8	23,7	23,4	22,7	22,1	20	17,4	13,9
DCM-G 125-3200/A/ BAQE/18,5		30,7						29,6	29,3	28,6	27,7	25,9	22,2	18,3	
DCM-G 125-3600/A/ BAQE/22		34,5						33,7	33,3	32,8	32,1	30,6	27,6	23,7	19,1
DCM-G 125-4022/A/ BAQE/30		39						38,9	38,5	37,6	36,6	36,1	33,2	29,5	24,7

MODEL	Q=m ³ h	0	90	102	114	120	150	180	210	240	250	270	330	360	390	420
	Q=l/min	0	1500	1700	1900	2000	2500	3000	3500	4000	4167	4500	5500	6000	6500	7000
DCM-G 150-955/A/BAQE/5,5	H (m)	9,6				8,1	7	6,2	4,9	3,5	2,8					
DCM-G 150-1322/A/BAQE/7,5		11,8	11,5	11,5	11,4	11	10	8,5	7,2	6	5,5					
DCM-G 150-1600/A/BAQE/11		14,8		14,2	14,2	14	13,4	12,5	11,4	10,1	9,4	8,8	7,5			
DCM-G 150-1950/A/BAQE/15		18,1		17,9	17,8	17,7	17,5	16,9	15,9	14,8	14	13,5	12	10,5	8,9	
DCM-G 150-2200/A/BAQE/18,5		20,2		20,7	20,6	20,4	20,2	19,7	18,5	17,3	16,6	15	14,2	12,2	10,5	8,5
DCM-G 150-2405/A/BAQE/22		22,5		22,2	22	21,9	21,4	21	20	19	18,5	17,8	16	14	12	9,7

CM-G 65 4 POLES - IN-LINE PUMPS

Pumped liquid temperature range: from -10 °C to +140 °C - Maximum ambient temperature: +40 °C



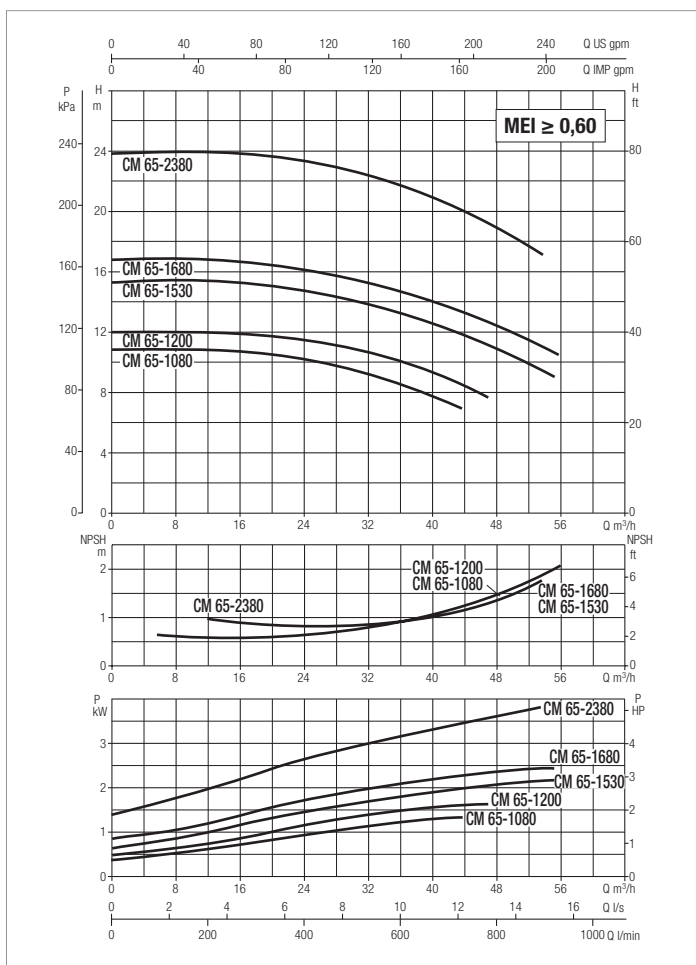
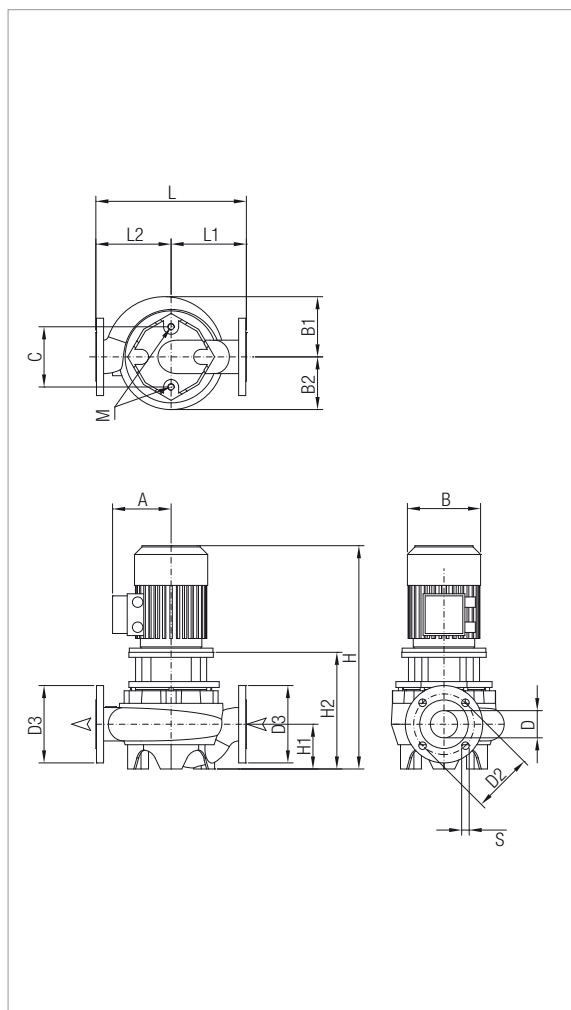
The performance curves are based on kinematic viscosity values = 1 mm²/s and density equal to 1000 kg/m³. Curve tolerance according to ISO 9906.

MODEL	CENTRE DISTANCE	PUMP CONNECTIONS	ELECTRICAL DATA									
			POWER INPUT 50 Hz	n r.p.m.	P1 MAX KW	P2 NOMINAL		In A		MOTOR TYPE	MOTOR SIZE	I st. A
						KW	HP	230 V	400 V			
CM-G 65-420/A/BAQE/0,25	360	DN 65	3 x 230 - 400 V ~	1400	0,4	0,25	0,33	1,6	0,9	-	MEC 71	4,6/2,6
CM-G 65-540/A/BAQE/0,37	360	DN 65	3 x 230 - 400 V ~	1380	0,6	0,37	0,5	1,7	0,98	-	MEC 71	8,1/4,6
CM-G 65-660/A/BAQE/0,55	360	DN 65	3 x 230 - 400 V ~	1400	0,8	0,55	0,75	2,6	1,5	-	MEC 80M	13,9/8
CM-G 65-760/A/BAQE/0,55	360	DN 65	3 x 230 - 400 V ~	1390	0,8	0,55	0,75	2,6	1,5	-	MEC 80M	13,9/8
CM-G 65-920/A/BAQE/0,75	360	DN 65	3 x 230 - 400 V ~	1430	1,2	0,75	1	3,12	1,8	IE3	MEC 80M	17,2/9,9

MODEL	A	B1	B2	C	D	D2	D3	S	no. of holes	H	H1	H2	L	L1	L2	M	PACKING DIMENSIONS			VOL. (m³)	WEIGHT Kg
																	L/A	L/B	H		
CM-G 65-420/A/BAQE/0,25	124	144	126	144	65	145	185	18	4	479	107	254	360	180	180	M16	689	426	834	0,245	55
CM-G 65-540/A/BAQE/0,37	124	144	126	144	65	145	185	18		479	107	254	360	180	180	M16	689	426	834	0,245	55
CM-G 65-660/A/BAQE/0,55	140	144	126	144	65	145	185	18		534	107	279	360	180	180	M16	689	426	834	0,245	65
CM-G 65-760/A/BAQE/0,55	140	144	126	144	65	145	185	18		534	107	279	360	180	180	M16	689	426	834	0,245	73
CM-G 65-920/A/BAQE/0,75	129	144	126	144	65	145	185	18		511	107	279	360	180	180	M16	689	426	834	0,245	67

CM-G 65 4 POLES - IN-LINE PUMPS

Pumped liquid temperature range: from -10 °C to +140 °C - Maximum ambient temperature: +40 °C



The performance curves are based on kinematic viscosity values = 1 mm²/s and density equal to 1000 kg/m³. Curve tolerance according to ISO 9906.

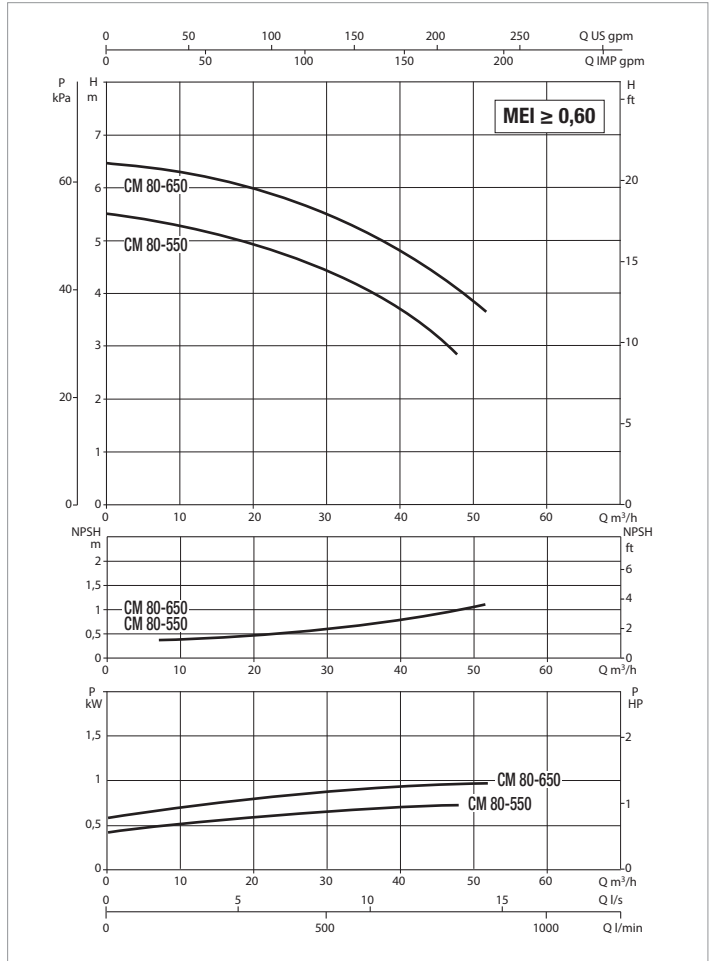
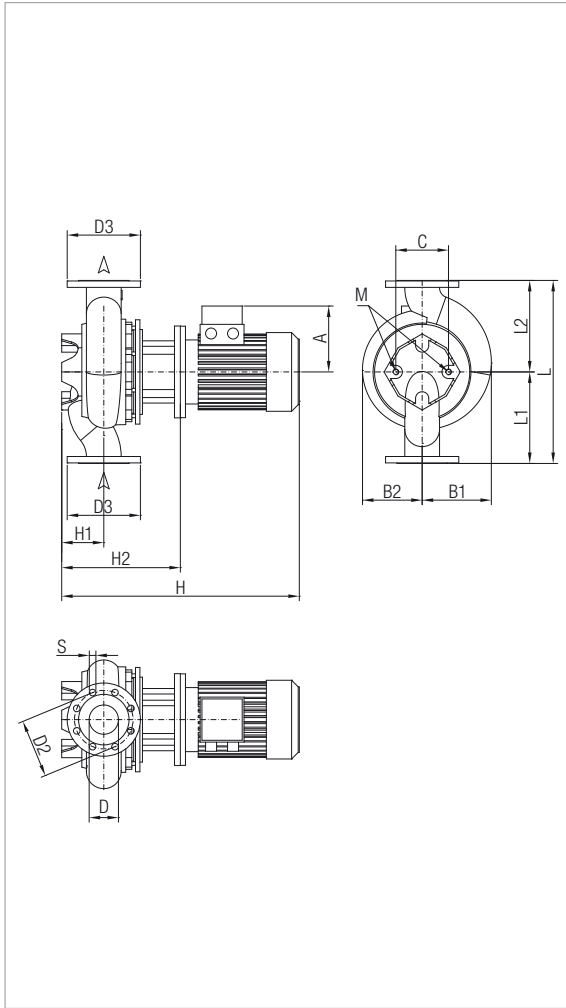
MODEL	CENTRE DISTANCE	PUMP CONNECTIONS	ELECTRICAL DATA								MOTOR TYPE	MOTOR SIZE	I st. A	
			POWER INPUT 50 Hz	n r.p.m.	P1 MAX			P2 NOMINAL		In A				
					KW	KW	HP	230 V	400 V					
CM-G 65-1080/A/BAQE/1,1	475	DN 65	3 x 230 - 400V ~	1435	1,6	1,1	1,5	4,33	2,5	IE3	MEC 90S	30,7/17,8		
CM-G 65-1200/A/BAQE/1,5	475	DN 65	3 x 230 - 400V ~	1430	2	1,5	2	6,24	3,6	IE3	MEC 90L	41,2/23,8		
CM-G 65-1530/A/BAQE/2,2	475	DN 65	3 x 230 - 400V ~	1455	2,9	2,2	3	10,22	5,9	IE3	MEC 100L	60,3/34,8		
CM-G 65-1680/A/BAQE/3	475	DN 65	3 x 400V ~ ¹	1448	2,7	3	4	-	6,8	IE3	MEC 100L	55,1		
CM-G 65-2380/A/BAQE/4	475	DN 65	3 x 400V ~ ¹	1449	4,3	4	5,5	-	8,2	IE3	MEC 112M	57,8		

¹ star start-up possible (Δ)

MODEL	A	B1	B2	C	D	D2	D3	S	no. of holes	H	H1	H2	L	L1	L2	M	PACKING DIMENSIONS			VOL. (m³)	WEIGHT Kg
																	L/A	L/B	H		
																	CM-G 65-1080/A/BAQE/1,1	138	180		
CM-G 65-1200/A/BAQE/1,5	138	180	164	144	65	145	185	18	4	597	125	291	475	237,5	237,5	M16	689	426	834	0,245	71
CM-G 65-1530/A/BAQE/2,2	145	180	164	144	65	145	185	18	4	623	125	319	475	237,5	237,5	M16	689	426	834	0,245	86
CM-G 65-1680/A/BAQE/3	145	180	164	144	65	145	185	18	4	623	125	319	475	237,5	237,5	M16	689	426	834	0,245	72
CM-G 65-2380/A/BAQE/4	161	180	164	144	65	145	185	18	4	717	125	319	475	237,5	237,5	M16	689	426	1084	0,318	92

CM-G 80 4 POLES - IN-LINE PUMPS

Pumped liquid temperature range: from -10 °C to +140 °C - Maximum ambient temperature: +40 °C



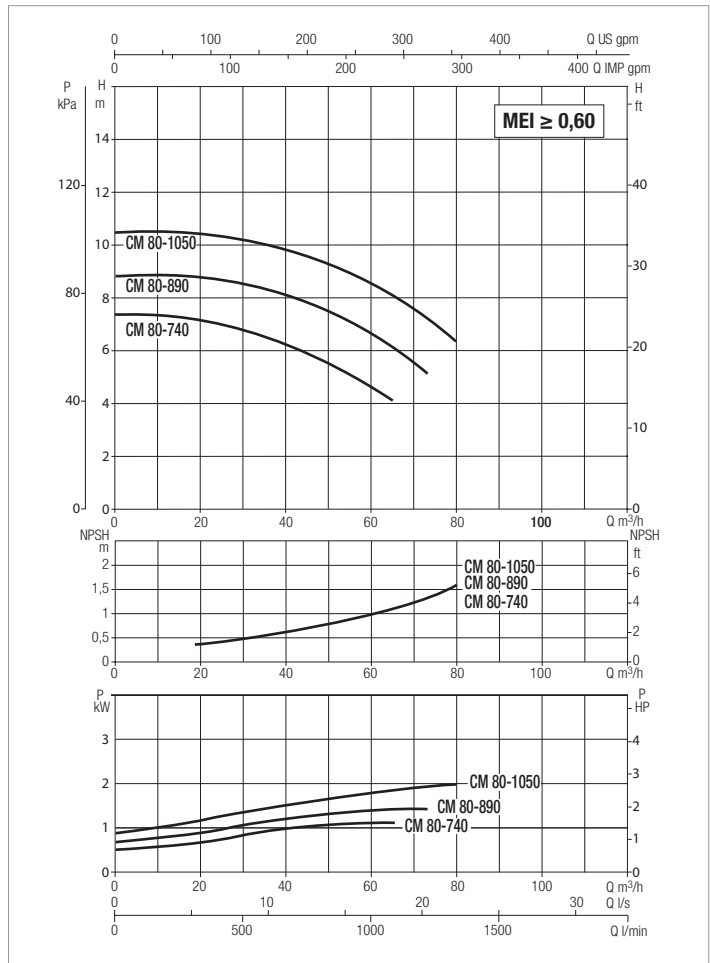
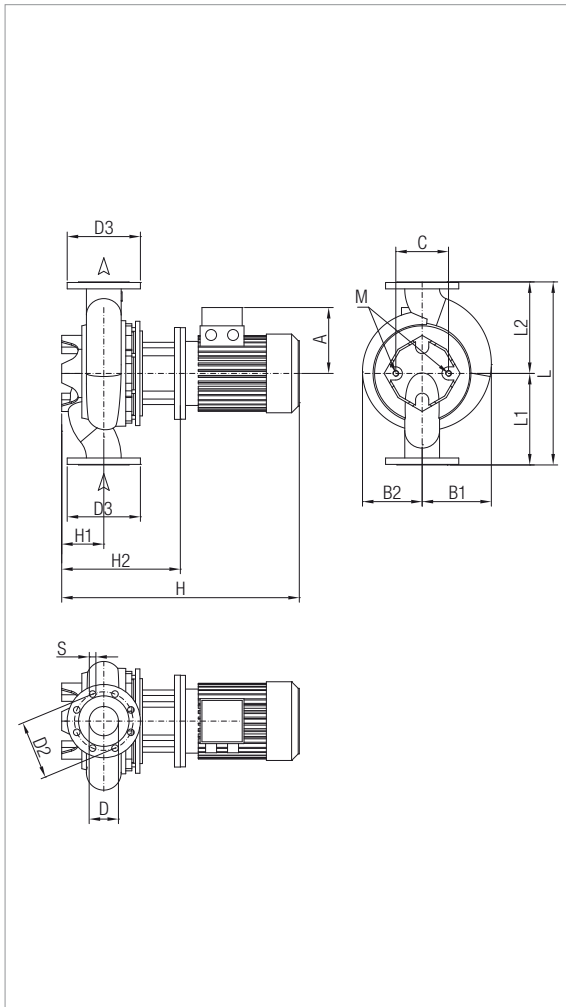
The performance curves are based on kinematic viscosity values = 1 mm²/s and density equal to 1000 kg/m³. Curve tolerance according to ISO 9906.

MODEL	CENTRE DISTANCE	PUMP CONNECTIONS	ELECTRICAL DATA									
			POWER INPUT 50 Hz	n r.p.m.	P1 MAX KW	P2 NOMINAL		In A		MOTOR TYPE	MOTOR SIZE	I st. A
						kW	HP	230 V	400 V			
CM-G 80-550/A/BAQE/0,55	360	DN 80	3 x 230 - 400V ~	1390	0,8	0,55	0,75	2,6	1,5	-	MEC 80M	13,9/8
CM-G 80-650/A/BAQE/0,75	360	DN 80	3 x 230 - 400V ~	1430	1,2	0,75	1	3,12	1,8	IE3	MEC 80M	17,2/9,9

MODEL	A	B1	B2	C	D	D2	D3	S	no. of holes	H	H1	H2	L	L1	L2	M	PACKING DIMENSIONS			VOL. (mc)	WEIGHT kg
																	L/A	L/B	H		
CM-G 80-550/A/BAQE/0,55	140	135	118	144	80	160	200	18	8	536	105	281	360	180	180	M16	689	426	834	0,245	67
CM-G 80-650/A/BAQE/0,75	129	135	118	144	80	160	200	18		513	105	281	360	180	180	M16	689	426	834	0,245	61

CM-G 80 4 POLES - IN-LINE PUMPS

Pumped liquid temperature range: from -10 °C to +140 °C - Maximum ambient temperature: +40 °C



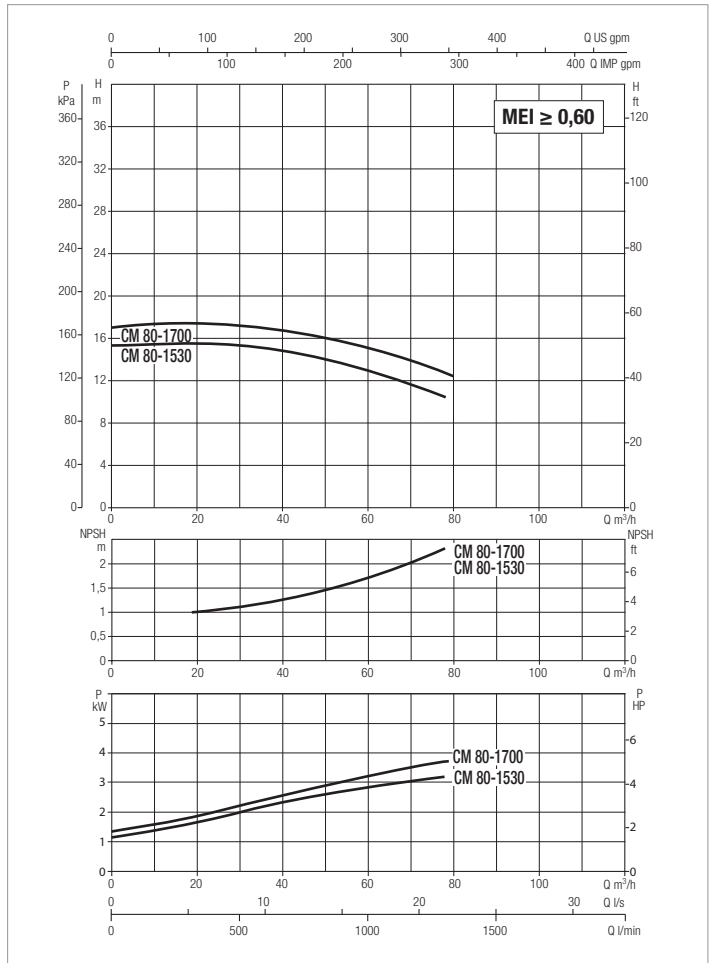
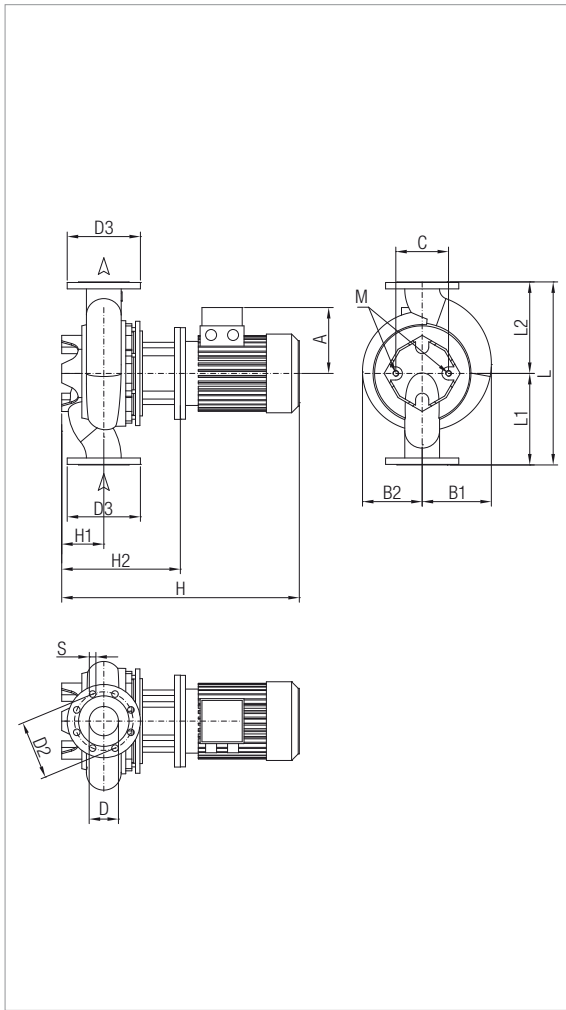
The performance curves are based on kinematic viscosity values = 1 mm²/s and density equal to 1000 kg/m³. Curve tolerance according to ISO 9906.

MODEL	CENTRE DISTANCE	PUMP CONNECTIONS	ELECTRICAL DATA									
			POWER INPUT 50 Hz	n r.p.m.	P1 MAX KW	P2 NOMINAL		In A		MOTOR TYPE	MOTOR SIZE	I st. A
						kW	HP	230 V	400 V			
CM-G 80-740/A/BAQE/1,1	440	DN 80	3 x 230 - 400 V ~	1439	1,5	1,1	1,5	4,33	2,5	IE3	MEC 90S	30,7/17,8
CM-G 80-890/A/BAQE/1,5	440	DN 80	3 x 230 - 400 V ~	1430	2	1,5	2	6,24	3,6	IE3	MEC 90L	41,2/23,8
CM-G 80-1050/A/BAQE/2,2	440	DN 80	3 x 230 - 400 V ~	1450	2,4	2,2	3	10,22	5,9	IE3	MEC 100L	60,3/34,8

MODEL	A	B1	B2	C	D	D2	D3	S	no. of holes	H	H1	H2	L	L1	L2	M	PACKING DIMENSIONS			VOL. (m³)	WEIGHT Kg
																	L/A	L/B	H		
																	CM-G 80-740/A/BAQE/1,1	138	178		
CM-G 80-890/A/BAQE/1,5	138	178	145	144	80	160	200	18	8	598	115	291	440	220	220	M16	689	426	834	0,245	67
CM-G 80-1050/A/BAQE/2,2	145	178	145	144	80	160	200	18	8	623	115	319	440	220	220	M16	689	426	834	0,245	80

CM-G 80 4 POLES - IN-LINE PUMPS

Pumped liquid temperature range: from -10 °C to +140 °C - Maximum ambient temperature: +40 °C



The performance curves are based on kinematic viscosity values = 1 mm²/s and density equal to 1000 kg/m³. Curve tolerance according to ISO 9906.

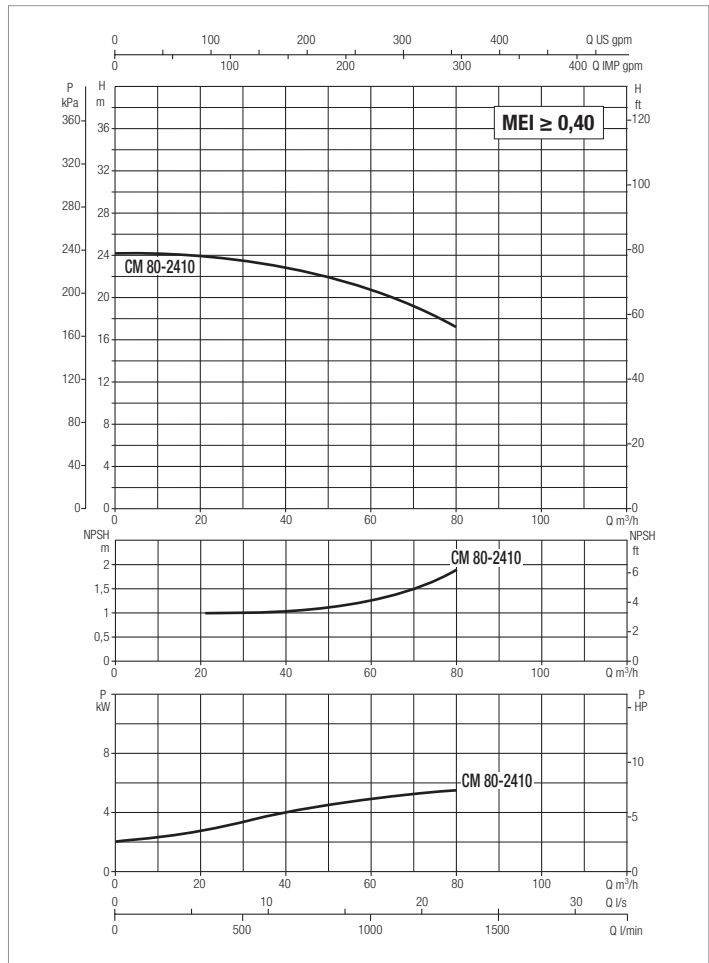
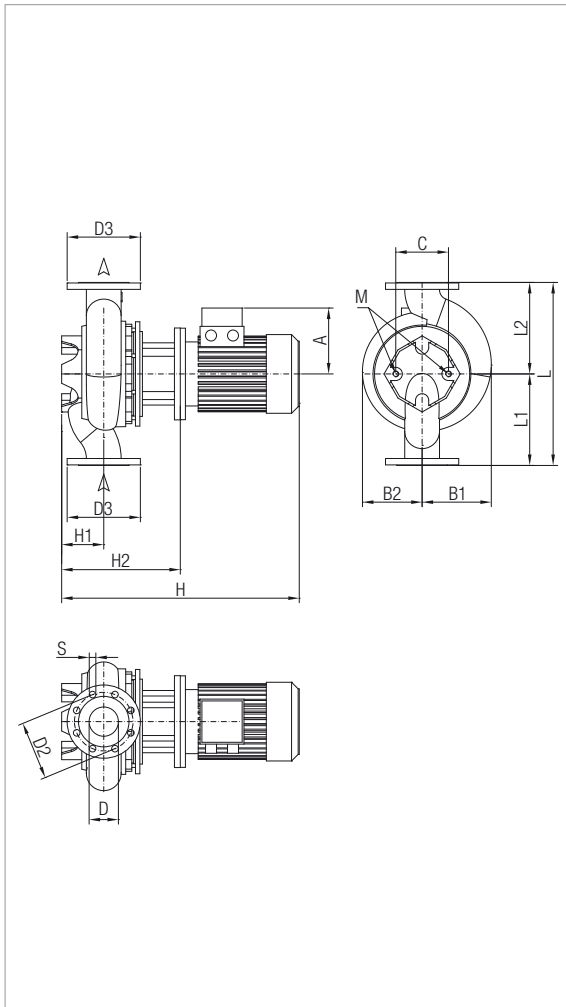
MODEL	CENTRE DISTANCE	PUMP CONNECTIONS	ELECTRICAL DATA									
			POWER INPUT 50 Hz	n r.p.m.	P1 MAX KW	P2 NOMINAL		In A		MOTOR TYPE	MOTOR SIZE	I st. A
						kW	HP	230 V	400 V			
CM-G 80-1530/A/BAQE/3	500	DN 80	3 x 400 V ~ ¹	1441	3,6	3	4	-	6,8	IE3	MEC 100L	55,1
CM-G 80-1700/A/BAQE/4	500	DN 80	3 x 400 V ~ ¹	1452	3,9	4	5,5	-	8,2	IE3	MEC 112M	57,8

¹ star start-up possible (Δ)

MODEL	A	B1	B2	C	D	D2	D3	S	no. of holes	H	H1	H2	L	L1	L2	M	PACKING DIMENSIONS			VOL. (m ³)	WEIGHT Kg
																	L/A	L/B	H		
																	CM-G 80-1530/A/BAQE/3	145	189		
CM-G 80-1700/A/BAQE/4	161	189	164	144	80	160	200	18	8	717	-	729	500	250	250	M16	739	626	1107	0,512	98

CM-G 80 4 POLES - IN-LINE PUMPS

Pumped liquid temperature range: from -10 °C to +140 °C - Maximum ambient temperature: +40 °C



The performance curves are based on kinematic viscosity values = 1 mm²/s and density equal to 1000 kg/m³. Curve tolerance according to ISO 9906.

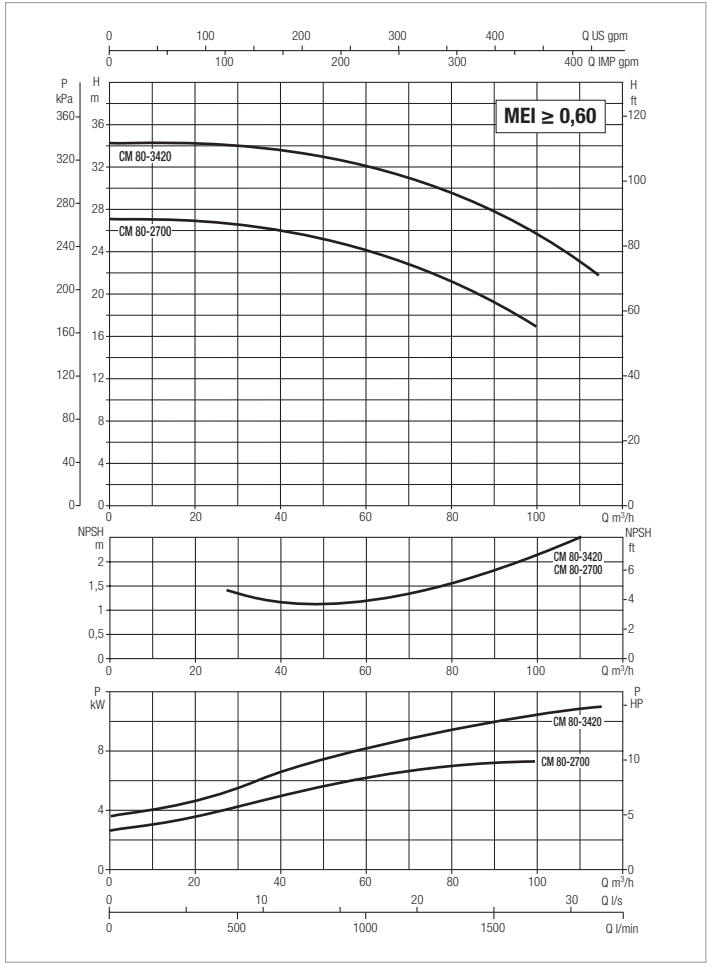
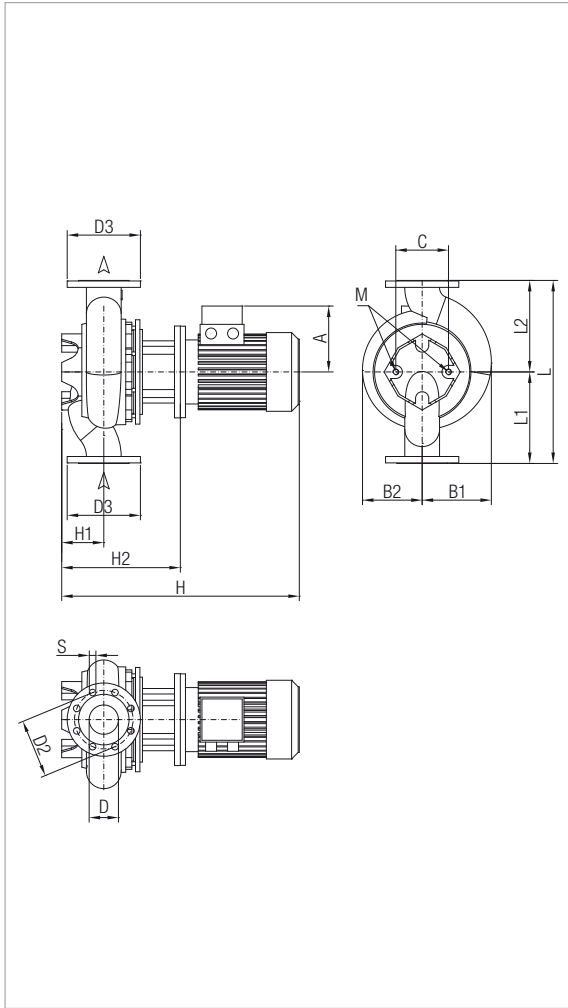
MODEL	CENTRE DISTANCE	PUMP CONNECTIONS	ELECTRICAL DATA								
			POWER INPUT 50 Hz	n r.p.m.	P1 MAX KW	P2 NOMINAL		In A 400 V	MOTOR TYPE	MOTOR SIZE	I st. A
CM-G 80-2410/A/BAQE/5,5	620	DN 80	3 x 400 V ~ ¹	1461	6,5	5,5	7,5	10,6	IE3	MEC 132S	92,2

¹ star start-up possible (A)

MODEL	A	B1	B2	C	D	D2	D3	S	no. of holes	H	H1	H2	L	L1	L2	M	PACKING DIMENSIONS			VOL. (m ³)	WEIGHT Kg
																	L/A	L/B	H		
CM-G 80-2410/A/BAQE/5,5	195	245	224	230	80	160	200	18	8	775	140	413	620	310	310	M16	739	626	1107	0,512	204

CM-G 80 4 POLES - IN-LINE PUMPS

Pumped liquid temperature range: from -10 °C to +140 °C - Maximum ambient temperature: +40 °C



The performance curves are based on kinematic viscosity values = 1 mm²/s and density equal to 1000 kg/m³. Curve tolerance according to ISO 9906.

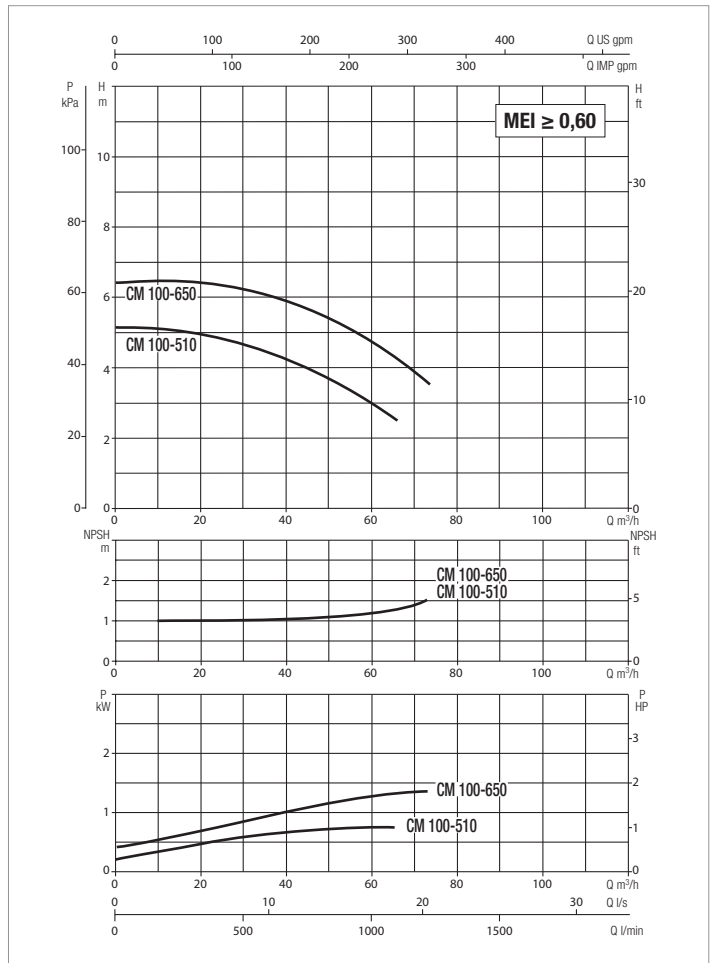
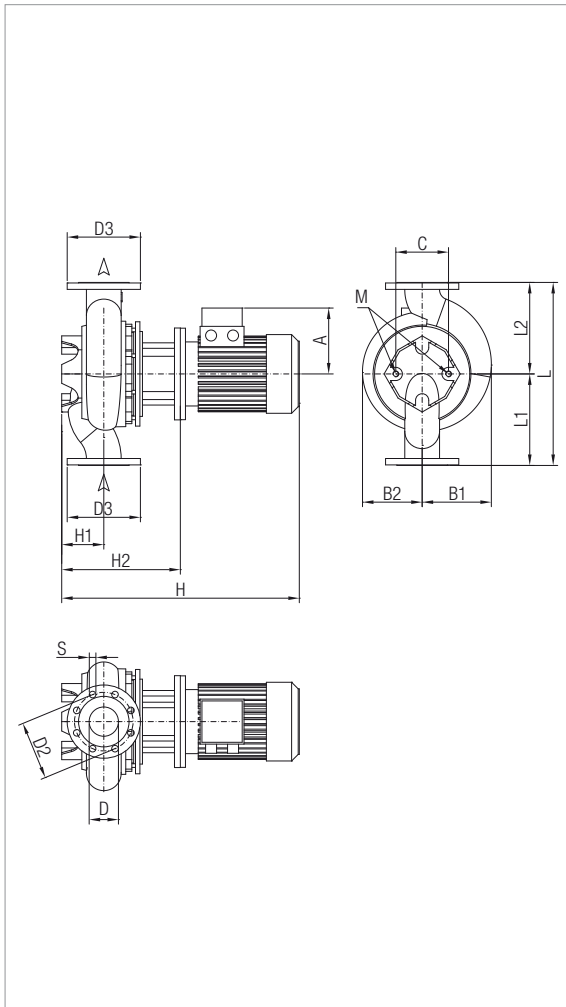
MODEL	CENTRE DISTANCE	PUMP CONNECTIONS	ELECTRICAL DATA								
			POWER INPUT 50 Hz	n r.p.m.	P1 MAX KW	P2 NOMINAL		In A 400 V	MOTOR TYPE	MOTOR SIZE	I st. A
CM-G 80-2700/A/BAQE/7,5	620	DN 80	3 x 400 V ~ ¹	1463	8,7	7,5	10	14,4	IE3	MEC 132M	124,1
CM-G 80-3420/A/BAQE/11	620	DN 80	3 x 400 V ~ ¹	1472	12,7	11	15	22,4	IE3	MEC 160M	172,2

¹ star start-up possible (A)

MODEL	A	B1	B2	C	D	D2	D3	S	no. of holes	H	H1	H2	L	L1	L2	M	PACKING DIMENSIONS			VOL. (m ³)	WEIGHT Kg
																	L/A	L/B	H		
CM-G 80-2700/A/BAQE/7,5	188	245	224	230	80	160	200	18	8	850	140	413	620	310	310	M16	739	626	1107	0,512	187
CM-G 80-3420/A/BAQE/11	249	245	224	230	80	160	200	18		948	140	413	620	310	310	M16	1200	720	758	0,655	277

CM-G 100 4 POLES - IN-LINE PUMPS

Pumped liquid temperature range: from -10 °C to +140 °C - Maximum ambient temperature: +40 °C



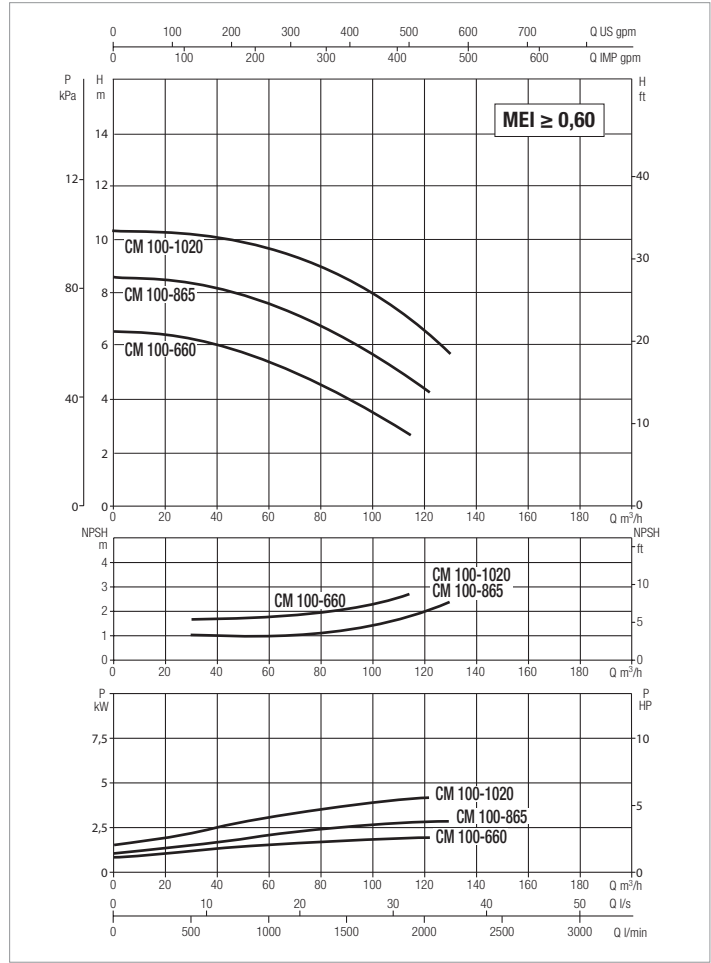
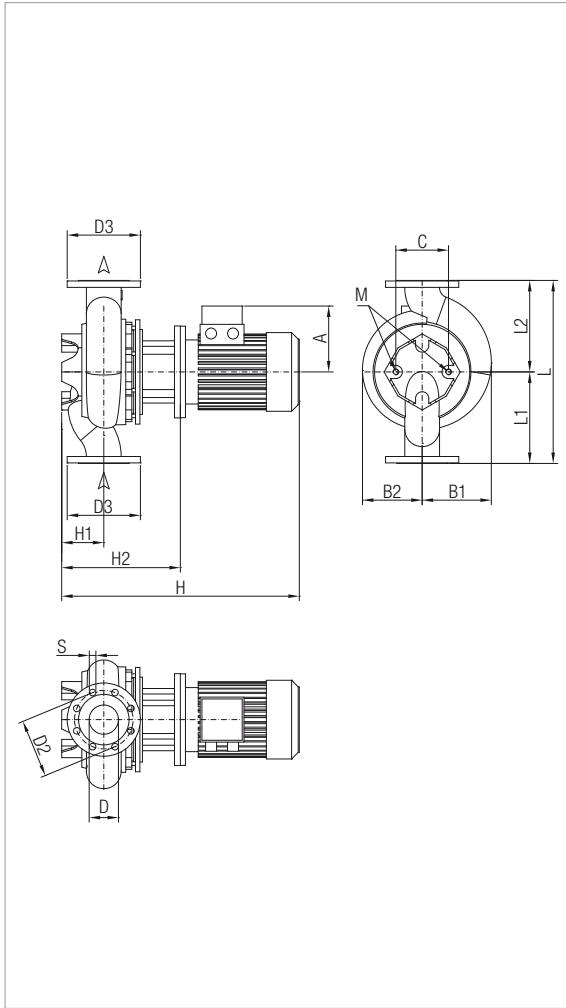
The performance curves are based on kinematic viscosity values = 1 mm²/s and density equal to 1000 kg/m³. Curve tolerance according to ISO 9906.

MODEL	CENTRE DISTANCE	PUMP CONNECTIONS	ELECTRICAL DATA									
			POWER INPUT 50 Hz	n r.p.m.	P1 MAX KW	P2 NOMINAL		In A		MOTOR TYPE	MOTOR SIZE	I st. A
						kW	HP	230 V	400 V			
CM-G 100-510/A/BAQE/0,75	500	DN 100	3x230-400V~	1430	1,2	0,75	1	3,12	1,8	IE3	MEC 80M	17,2/9,9
CM-G 100-650/A/BAQE/1,1	500	DN 100	3x230-400V~	1440	1,4	1,1	1,5	4,33	2,5	IE3	MEC 90S	30,7/17,8

MODEL	A	B1	B2	C	D	D2	D3	S	no. of holes	H	H1	H2	L	L1	L2	M	PACKING DIMENSIONS			VOL. (m ³)	WEIGHT Kg
																	L/A	L/B	H		
CM-G 100-510/A/BAQE/0,75	129	158	125	158	125	180	220	18	8	550	140	318	500	250	250	M16	689	426	834	0,245	78
CM-G 100-650/A/BAQE/1,1	138	158	125	158	125	180	220	18		585	140	318	500	250	250	M16	689	426	834	0,245	78

CM-G 100 4 POLES - IN-LINE PUMPS

Pumped liquid temperature range: from -10 °C to +140 °C - Maximum ambient temperature: +40 °C



The performance curves are based on kinematic viscosity values = 1 mm²/s and density equal to 1000 kg/m³. Curve tolerance according to ISO 9906.

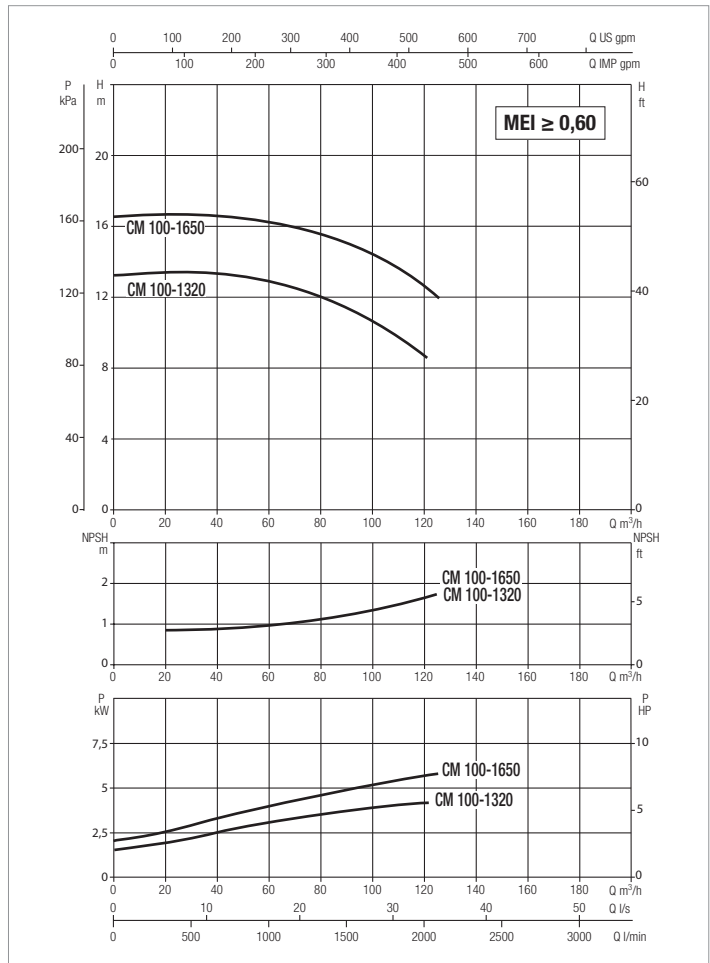
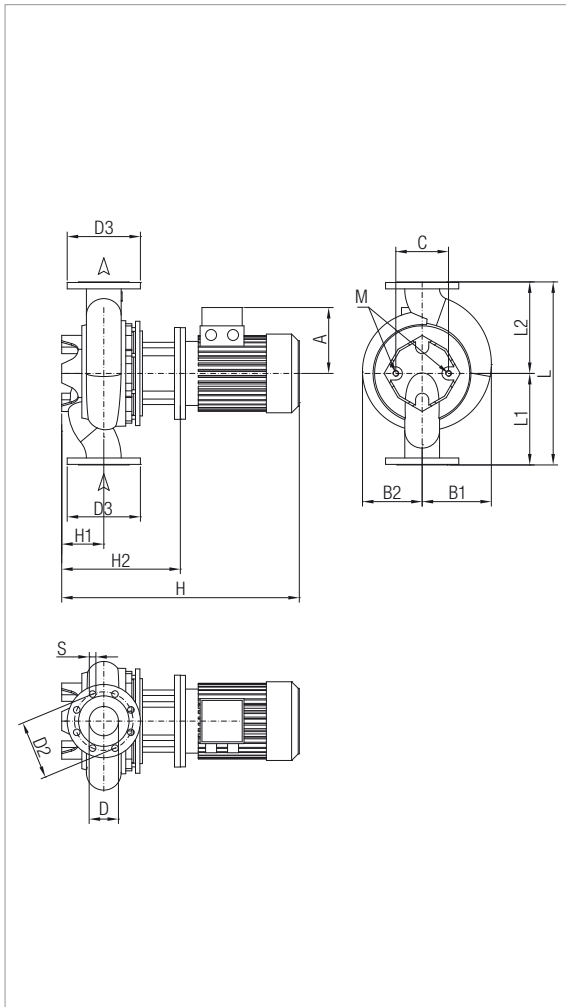
MODEL	CENTRE DISTANCE	PUMP CONNECTIONS	ELECTRICAL DATA									
			POWER INPUT 50 Hz	n r.p.m.	P1 MAX KW	P2 NOMINAL		In A		MOTOR TYPE	MOTOR SIZE	I st. A
						kW	HP	230 V	400 V			
CM-G 100-660/A/BAQE/1,5	550	DN 100	3 x 230 - 400 V ~	1430	2	1,5	2	6,24	3,6	IE3	MEC 90L	41,2/23,8
CM-G 100-865/A/BAQE/2,2	550	DN 100	3 x 230 - 400 V ~	1455	3	2,2	3	10,22	5,9	IE3	MEC 90L	60,3/34,8
CM-G 100-1020/A/BAQE/3	550	DN 100	3 x 400 V ~ ¹	1441	3,6	3	4	-	6,8	IE3	MEC 100L	55,1

¹ star start-up possible (A)

MODEL	A	B1	B2	C	D	D2	D3	S	no. of holes	H	H1	H2	L	L1	L2	M	PACKING DIMENSIONS			VOL. (m ³)	WEIGHT Kg
																	L/A	L/B	H		
																	CM-G 100-660/A/BAQE/2,5	138	192		
CM-G 100-865/A/BAQE/2,2	145	192	152	230	100	180	220	18	8	645	140	341	550	275	275	M16	689	426	834	0,245	108
CM-G 100-1020/A/BAQE/3	145	192	152	230	100	180	220	18	8	645	140	341	550	275	275	M16	689	426	834	0,245	102

CM-G 100 4 POLES - IN-LINE PUMPS

Pumped liquid temperature range: from -10 °C to +140 °C - Maximum ambient temperature: +40 °C



The performance curves are based on kinematic viscosity values = 1 mm²/s and density equal to 1000 kg/m³. Curve tolerance according to ISO 9906.

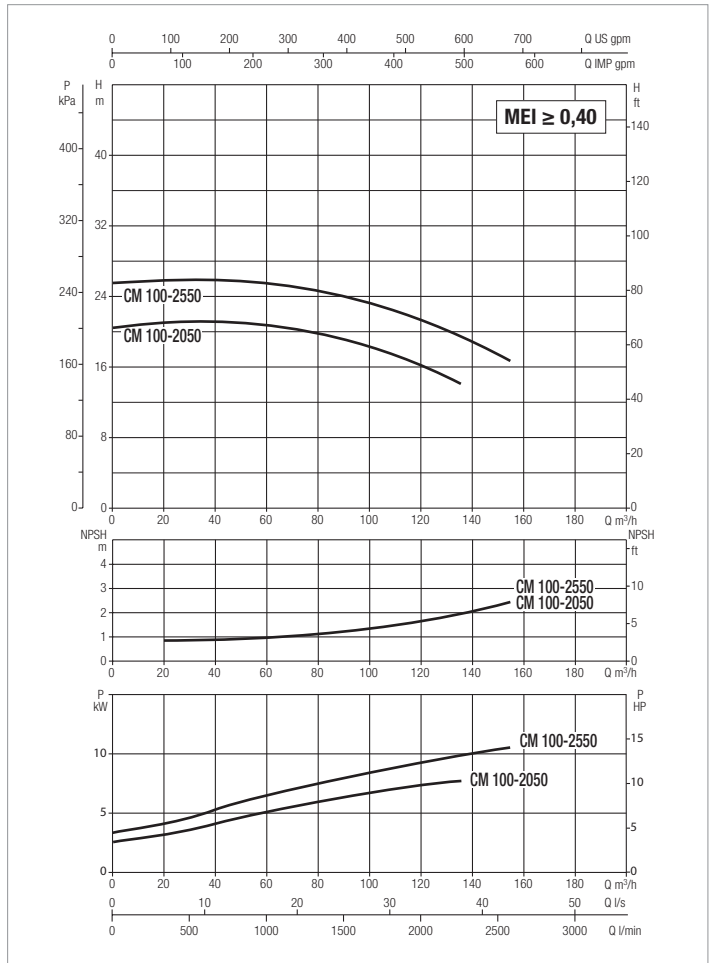
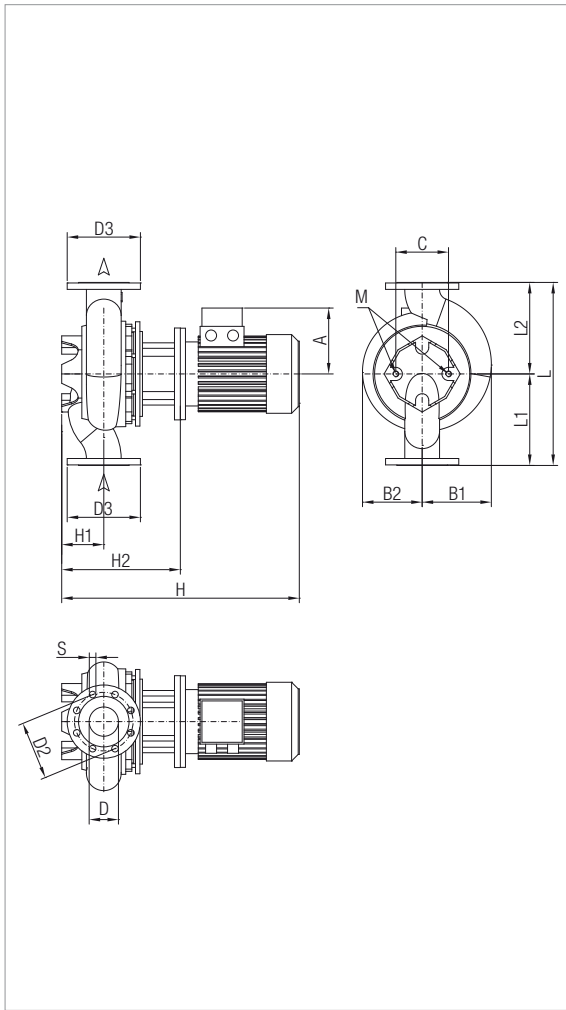
MODEL	CENTRE DISTANCE	PUMP CONNECTIONS	ELECTRICAL DATA								
			POWER INPUT 50 Hz	n r.p.m.	P1 MAX KW	P2 NOMINAL		In A 400 V	MOTOR TYPE	MOTOR SIZE	I st. A
CM-G 100-1320/A/BAQE/4	550	DN 100	3 x 400V ~ ¹	1450	4,6	4	5,5	8,2	IE3	MEC 112M	57,8
CM-G 100-1650/A/BAQE/5,5	550	DN 100	3 x 400V ~ ¹	1464	6,9	5,5	7,5	10,6	IE3	MEC 132S	92,2

¹ star start-up possible (A)

MODEL	A	B1	B2	C	D	D2	D3	S	no. of holes	H	H1	H2	L	L1	L2	M	PACKING DIMENSIONS			VOL. (m³)	WEIGHT Kg
																	L/A	L/B	H		
CM-G 100-1320/A/BAQE/4	161	204	174	230	100	180	220	18	8	799	140	341	550	275	275	M16	739	626	1107	0,512	137
CM-G 100-1650/A/BAQE/5,5	195	204	174	230	100	180	220	18		779	140	417	550	275	275	M16	739	626	1107	0,512	182

CM-G 100 4 POLES - IN-LINE PUMPS

Pumped liquid temperature range: from -10 °C to +140 °C - Maximum ambient temperature: +40 °C



The performance curves are based on kinematic viscosity values = 1 mm²/s and density equal to 1000 kg/m³. Curve tolerance according to ISO 9906.

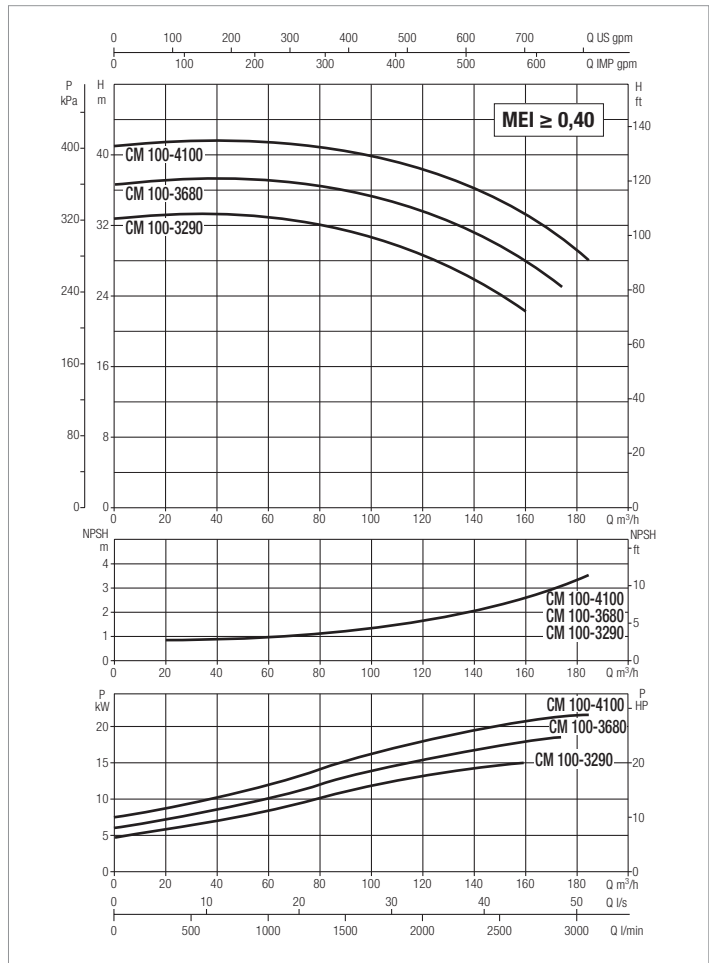
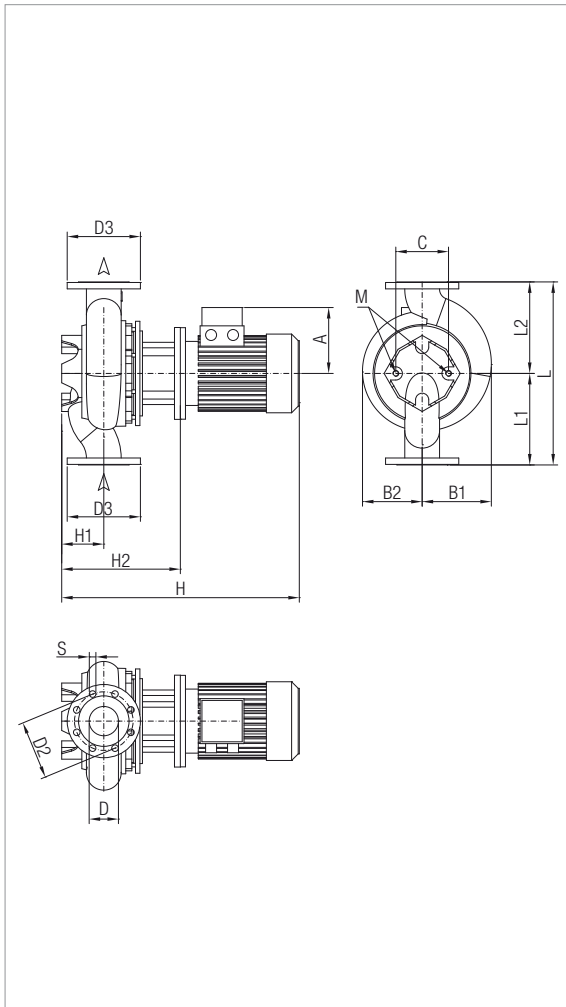
MODEL	CENTRE DISTANCE	PUMP CONNECTIONS	ELECTRICAL DATA								
			POWER INPUT 50 Hz	n r.p.m.	P1 MAX KW	P2 NOMINAL		In A 400 V	MOTOR TYPE	MOTOR SIZE	I st. A
CM-G 100-2050/A/BAQE/7,5	670	DN 100	3 x 400 V ~ ¹	1461	8,5	7,5	10	14,4	IE3	MEC 132M	124,1
CM-G 100-2550/A/BAQE/11	670	DN 100	3 x 400 V ~ ¹	1470	12,1	11	15	22,4	IE3	MEC 160M	172,2

¹ star start-up possible (Δ)

MODEL	A	B1	B2	C	D	D2	D3	S	no. of holes	H	H1	H2	L	L1	L2	M	PACKING DIMENSIONS			VOL. (m³)	WEIGHT Kg
																	L/A	L/B	H		
CM-G 100-2050/A/BAQE/7,5	188	293	253	230	100	180	220	18	8	890	175	453	670	335	335	M16	739	626	1107	0,512	230
CM-G 100-2550/A/BAQE/11	249	293	253	230	100	180	220	18		988	175	483	670	335	335	M16	1200	720	758	0,655	323

CM-G 100 4 POLES - IN-LINE PUMPS

Pumped liquid temperature range: from -10 °C to +140 °C - Maximum ambient temperature: +40 °C



The performance curves are based on kinematic viscosity values = 1 mm²/s and density equal to 1000 kg/m³. Curve tolerance according to ISO 9906.

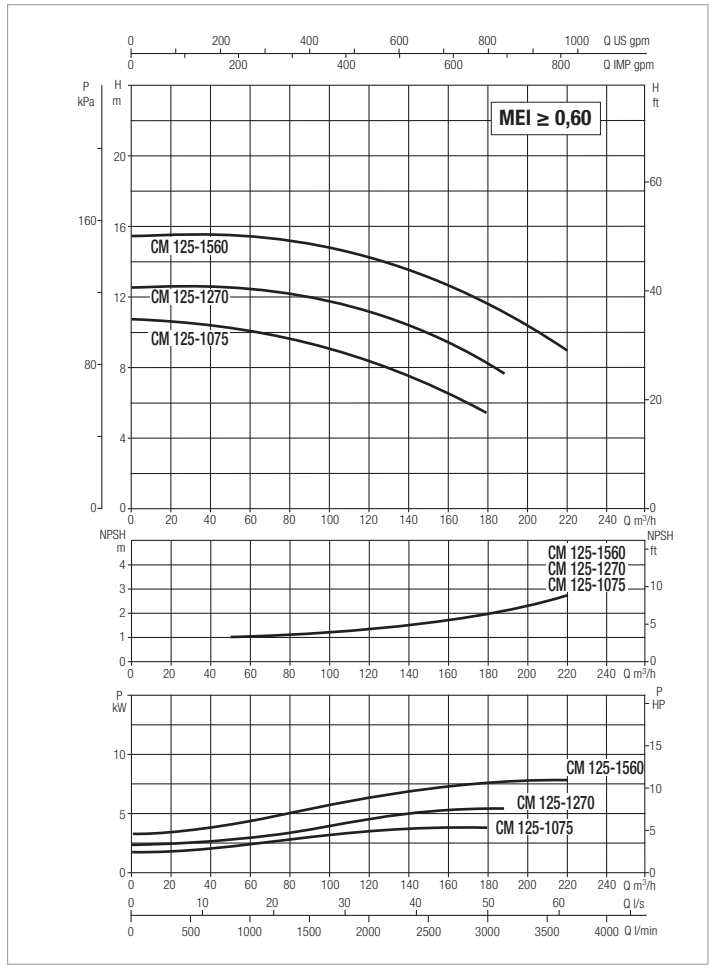
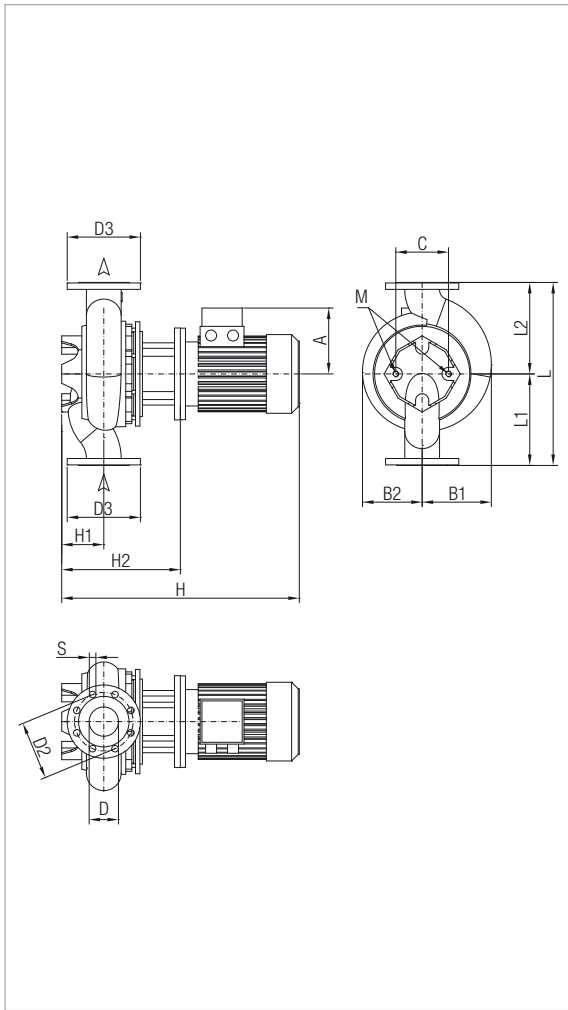
MODEL	CENTRE DISTANCE	PUMP CONNECTIONS	ELECTRICAL DATA								
			POWER INPUT 50 Hz	n r.p.m.	P1 MAX KW	P2 NOMINAL		In A 400 V	MOTOR TYPE	MOTOR SIZE	I st. A
						kW	HP				
CM-G 100-3290/A/BAQE/15	670	DN 100	3 x 400 V ~ ¹	1471	17,1	15	20	30,5	IE3	MEC 160L	232,4
CM-G 100-3680/A/BAQE/18,5	670	DN 100	3 x 400 V ~ ¹	1470	19,6	18,5	25	34,3	IE3	MEC 180M	268,6
CM-G 100-4100/A/BAQE/22	670	DN 100	3 x 400 V ~ ¹	1470	22,4	22	30	40,2	IE3	MEC 180L	336,1

¹ star start-up possible (Δ)

MODEL	A	B1	B2	C	D	D2	D3	S	no. of holes	H	H1	H2	L	L1	L2	M	PACKING DIMENSIONS			VOL. (m ³)	WEIGHT Kg
																	L/A	L/B	H		
CM-G 100-3290/A/BAQE/15	249	293	253	230	100	180	220	18	8	1031	175	483	670	335	335	M16	1200	720	758	0,655	333
CM-G 100-3680/A/BAQE/18,5	265	293	253	230	100	180	220	18		1063	175	483	670	335	335	M16	1200	720	758	0,655	359
CM-G 100-4100/A/BAQE/22	265	293	253	230	100	180	220	18		1101	175	483	670	335	335	M16	1200	720	758	0,655	370

CM-G 125 4 POLES - IN-LINE PUMPS

Pumped liquid temperature range: from -10 °C to +140 °C - Maximum ambient temperature: +40 °C



The performance curves are based on kinematic viscosity values = 1 mm²/s and density equal to 1000 kg/m³. Curve tolerance according to ISO 9906.

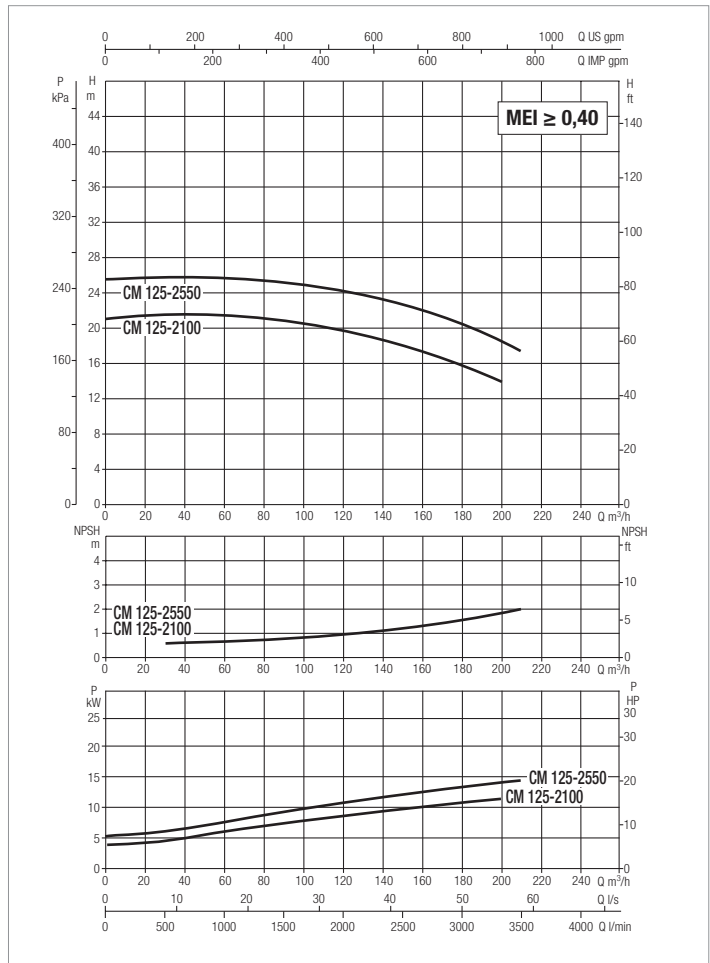
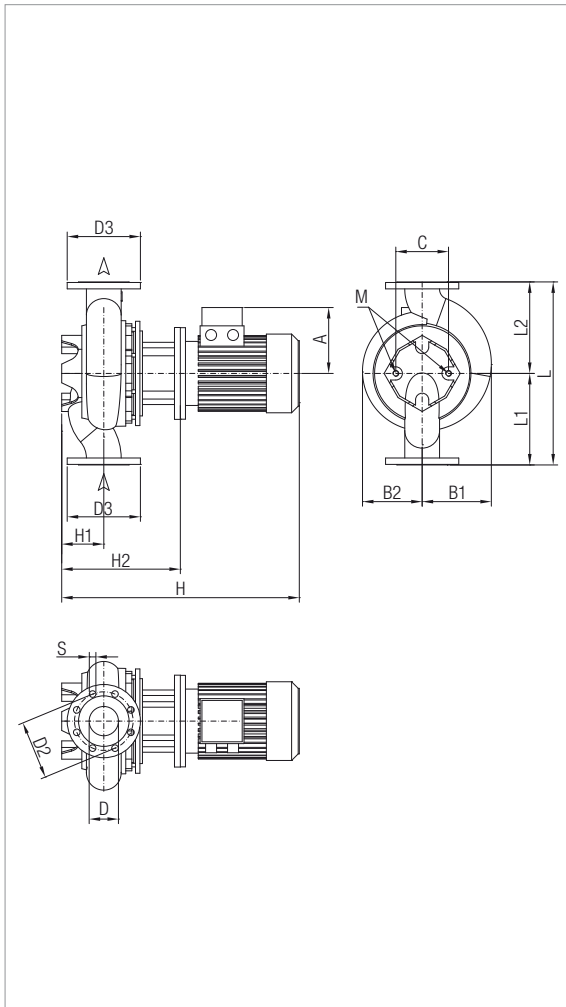
MODEL	CENTRE DISTANCE	PUMP CONNECTIONS	ELECTRICAL DATA								
			POWER INPUT 50 Hz	n r.p.m.	P1 MAX KW	P2 NOMINAL		In A 400 V	MOTOR TYPE	MOTOR SIZE	I st. A
CM-G 125-1075/A/BAQE/4	620	DN 125	3 x 400V ~ ¹	1455	5,1	4	5,5	8,2	IE3	MEC 112M	57,8
CM-G 125-1270/A/BAQE/5,5	620	DN 125	3 x 400V ~ ¹	1465	7,2	5,5	7,5	10,6	IE3	MEC 132S	92,2
CM-G 125-1560/A/BAQE/7,5	620	DN 125	3 x 400V ~ ¹	1469	9,5	7,5	10	14,4	IE3	MEC 132M	124,1

¹ star start-up possible (A)

MODEL	A	B1	B2	C	D	D2	D3	S	no. of holes	H	H1	H2	L	L1	L2	M	PACKING DIMENSIONS			VOL. (m ³)	WEIGHT Kg
																	L/A	L/B	H		
CM-G 125-1075/A/BAQE/4	161	252	204	230	125	210	250	18	8	880	215	482	620	310	310	M16	739	626	1107	0,512	191
CM-G 125-1270/A/BAQE/5,5	195	252	204	230	125	210	250	18		860	215	498	620	310	310	M16	739	626	1107	0,512	237
CM-G 125-1560/A/BAQE/7,5	188	252	204	230	125	210	250	18		935	215	498	620	310	310	M16	739	626	1107	0,512	218

CM-G 125 4 POLES - IN-LINE PUMPS

Pumped liquid temperature range: from -10 °C to +140 °C - Maximum ambient temperature: +40 °C



The performance curves are based on kinematic viscosity values = 1 mm²/s and density equal to 1000 kg/m³. Curve tolerance according to ISO 9906.

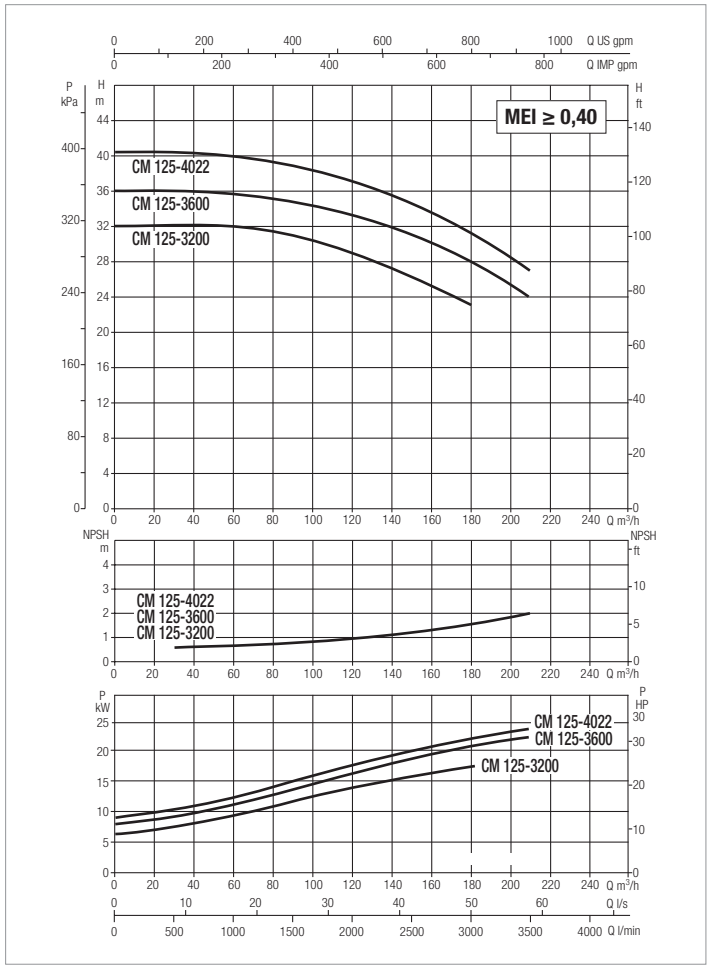
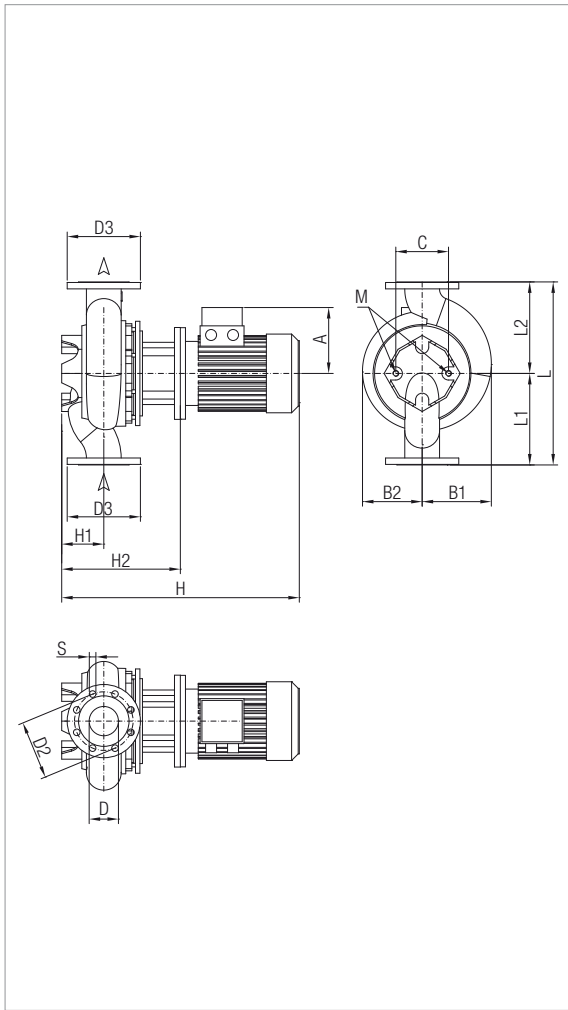
MODEL	CENTRE DISTANCE	PUMP CONNECTIONS	ELECTRICAL DATA									
			POWER INPUT 50 Hz	n r.p.m.	P1 MAX KW	P2 NOMINAL		In A 400 V	MOTOR TYPE	MOTOR SIZE	I st. A	
CM-G 125-2100/A/BAQE/11	800	DN 125	3x400V ~ ¹	1475	13,6	11	15	22,4	IE3	MEC 160M	172,2	
CM-G 125-2550/A/BAQE/15	800	DN 125	3x400V ~ ¹	1470	16,3	15	20	30,5	IE3	MEC 160L	232,4	

¹ star start-up possible (A)

MODEL	A	B1	B2	C	D	D2	D3	S	no. of holes	H	H1	H2	L	L1	L2	M	PACKING DIMENSIONS			VOL. (m³)	WEIGHT Kg
																	L/A	L/B	H		
CM-G 125-2100/A/BAQE/11	249	273	245	230	125	210	250	18	8	1038	215	533	800	400	400	M16	1440	1040	676	1,012	311
CM-G 125-2550/A/BAQE/15	249	273	245	230	125	210	250	18		1081	215	533	800	400	400	M16	1440	1040	676	1,012	321

CM-G 125 4 POLES- IN-LINE PUMPS

Pumped liquid temperature range: from -10 °C to +140 °C - Maximum ambient temperature: +40 °C



The performance curves are based on kinematic viscosity values = 1 mm²/s and density equal to 1000 kg/m³. Curve tolerance according to ISO 9906.

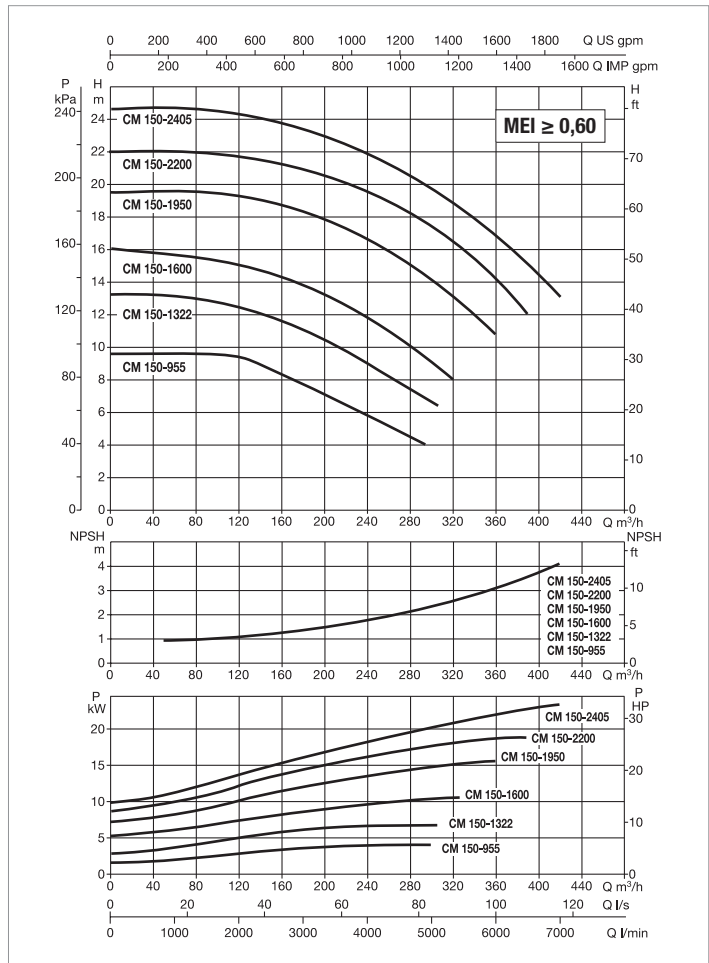
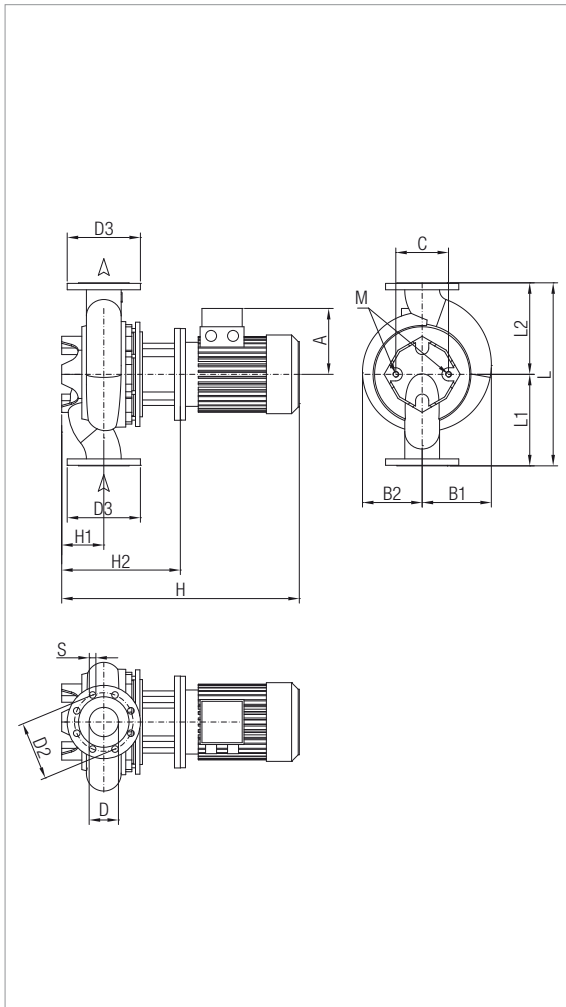
MODEL	CENTRE DISTANCE	PUMP CONNECTIONS	ELECTRICAL DATA								
			POWER INPUT 50 Hz	n r.p.m.	P1 MAX KW	P2 NOMINAL		In A 400 V	MOTOR TYPE	MOTOR SIZE	I st. A
CM-G 125-3200/A/BAQE/18,5	800	DN 125	3 x 400 V ~ ¹	1471	17,9	18,5	25	34,3	IE3	MEC 180M	268,6
CM-G 125-3600/A/BAQE/22	800	DN 125	3 x 400 V ~ ¹	1470	22,4	22	30	40,2	IE3	MEC 180L	336,1
CM-G 125-4022/A/BAQE/30	800	DN 125	3 x 400 V ~ ¹	1478	26,5	30	40	53,7	IE3	MEC 200L	460,1

¹ star start-up possible (A)

MODEL	A	B1	B2	C	D	D2	D3	S	no. of holes	H	H1	H2	L	L1	L2	M	PACKING DIMENSIONS			VOL. (m ³)	WEIGHT Kg
																	L/A	L/B	H		
CM-G 125-3200/A/BAQE/18,5	265	273	245	230	125	210	250	18	8	1113	215	533	800	400	400	M16	1440	1040	676	1,012	346
CM-G 125-3600/A/BAQE/22	265	273	245	230	125	210	250	18		1151	215	533	800	400	400	M16	1440	1040	676	1,012	357
CM-G 125-4022/A/BAQE/30	292	273	245	230	125	210	250	18		1203	215	533	800	400	400	M16	1440	1040	676	1,012	453

CM-G 150 4 POLES - IN-LINE PUMPS

Pumped liquid temperature range: from -10 °C to +140 °C - Maximum ambient temperature: +40 °C



The performance curves are based on kinematic viscosity values = 1 mm²/s and density equal to 1000 kg/m³. Curve tolerance according to ISO 9906.

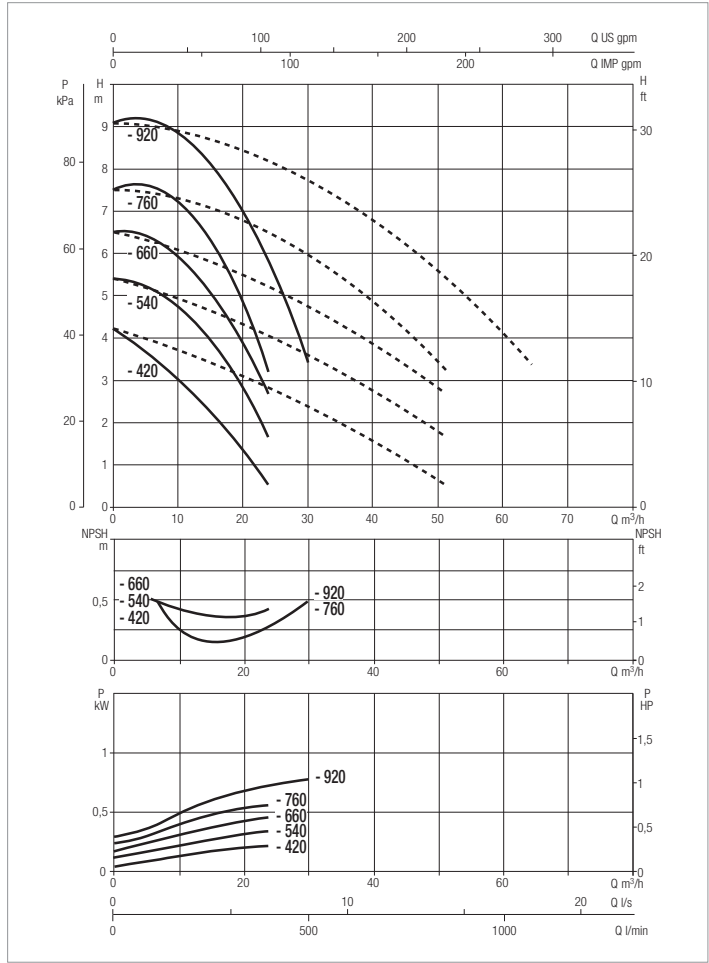
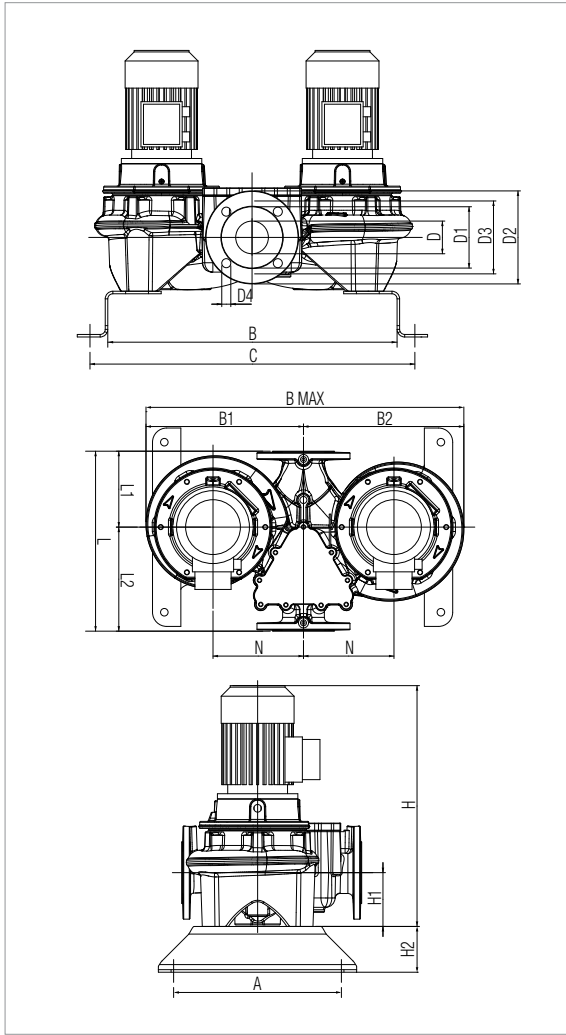
MODEL	CENTRE DISTANCE	PUMP CONNECTIONS	ELECTRICAL DATA								
			POWER INPUT 50 Hz	n r.p.m.	P1 MAX KW	P2 NOMINAL		In A 400 V	MOTOR TYPE	MOTOR SIZE	I st. A
CM-G 150-955/A/BAQE/5,5	800	DN 150	3 x 400 V ~ ¹	1462	7,5	5,5	7,5	10,6	IE3	MEC 132S	92,2
CM-G 150-1322/A/BAQE/7,5	800	DN 150	3 x 400 V ~ ¹	1464	8,9	7,5	10	14,4	IE3	MEC 132M	124,1
CM-G 150-1600/A/BAQE/11	800	DN 150	3 x 400 V ~ ¹	1473	13	11	15	22,4	IE3	MEC 160M	172,2
CM-G 150-1950/A/BAQE/15	800	DN 150	3 x 400 V ~ ¹	1472	17,5	15	20	30,5	IE3	MEC 160L	232,4
CM-G 150-2200/A/BAQE/18,5	800	DN 150	3 x 400 V ~ ¹	1472	21,1	18,5	25	34,3	IE3	MEC 180M	268,6
CM-G 150-2405/A/BAQE/22	800	DN 150	3 x 400 V ~ ¹	1470	23,8	22	30	40,2	IE3	MEC 180L	336,1

¹ star start-up possible (A)

MODEL	A	B1	B2	C	D	D2	D3	S	no. of holes	H	H1	H2	L	L1	L2	M	PACKING DIMENSIONS			VOL. (m ³)	WEIGHT Kg
																	L/A	L/B	H		
CM-G 150-955/A/BAQE/5,5	195	298	239	230	150	240	285	22	8	869	215	507	800	400	400	M16	934	584	1335	0,728	298
CM-G 150-1322/A/BAQE/7,5	188	298	239	230	150	240	285	22		944	215	507	800	400	400	M16	934	584	1335	0,728	279
CM-G 150-1600/A/BAQE/11	249	298	239	230	150	240	285	22		1042	215	537	800	400	400	M16	1440	1040	676	1,012	327
CM-G 150-1950/A/BAQE/15	249	298	239	230	150	240	285	22		1085	215	537	800	400	400	M16	1440	1040	676	1,012	337
CM-G 150-2200/A/BAQE/18,5	265	298	239	230	150	240	285	22		1117	215	537	800	400	400	M16	1440	1040	676	1,012	361
CM-G 150-2405/A/BAQE/22	265	298	239	230	150	240	285	22		1155	215	537	800	400	400	M16	1440	1040	676	1,012	373

DCM-G 65 4 POLES - IN-LINE PUMPS

Pumped liquid temperature range: from -10 °C to +140 °C - Maximum ambient temperature: +40 °C



The performance curves are based on kinematic viscosity values = 1 mm²/s and density equal to 1000 kg/m³. Curve tolerance according to ISO 9906.

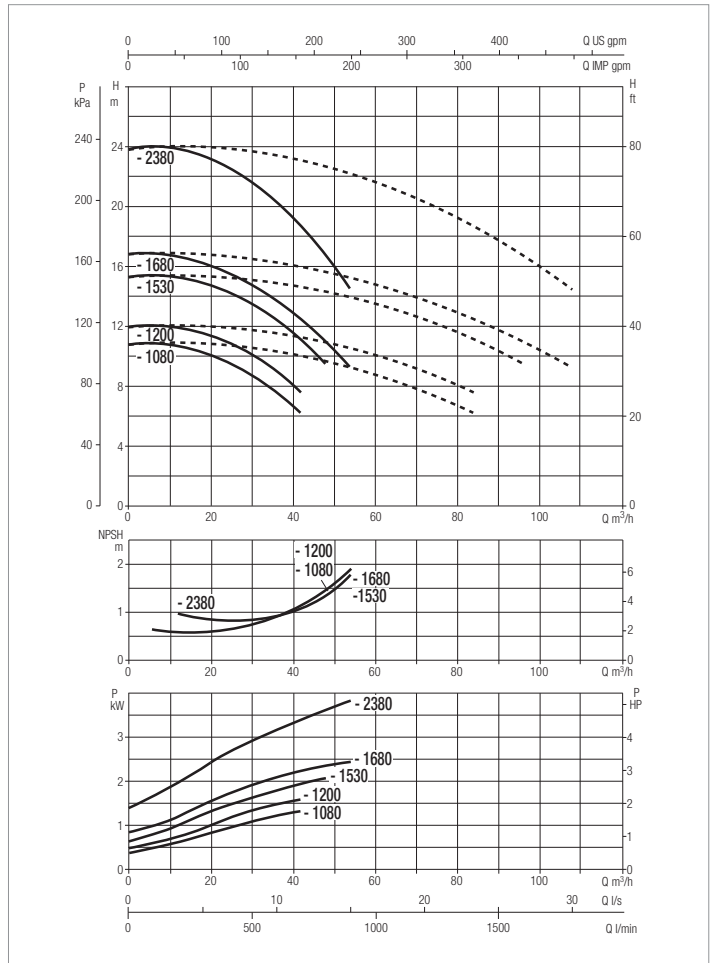
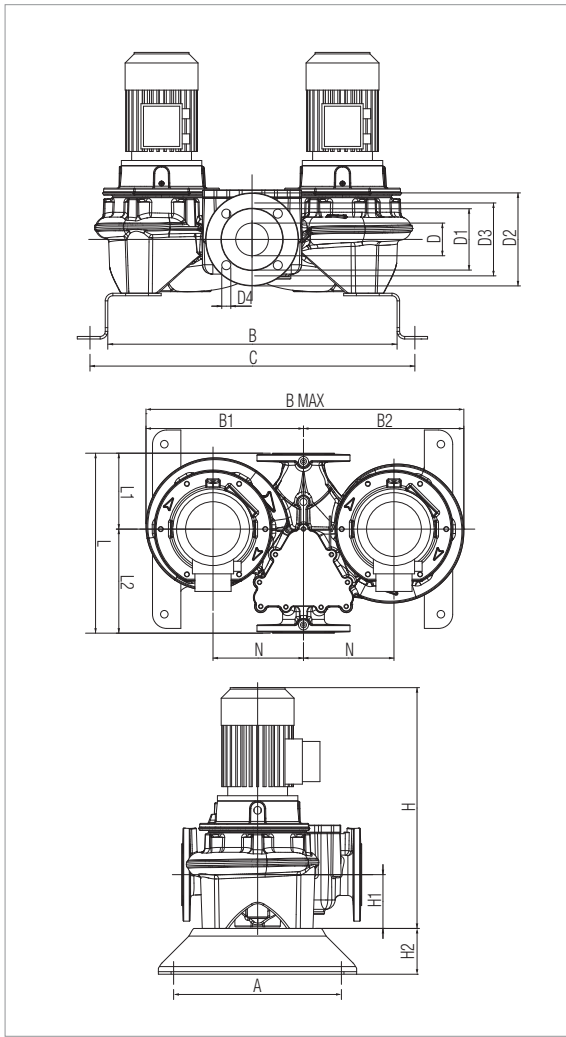
For the MEI index refer to the hydraulic data of the individual pump.

MODEL	CENTRE DISTANCE	PUMP CONNECTIONS	ELECTRICAL DATA									
			POWER INPUT 50 Hz	n r.p.m.	P1 MAX KW	P2 NOMINAL		In A		MOTOR TYPE	MOTOR SIZE	I st. A
						kW	HP	230 V	400 V			
DCM-G 65-420/A/BAQE/0,25	360	DN 65	3x230-400 V ~	1400	0,4	0,25	0,33	1,6	0,9	-	MEC 71	4,6/2,6
DCM-G 65-540/A/BAQE/0,37	360	DN 65	3x230-400 V ~	1380	0,6	0,37	0,5	1,7	1	-	MEC 71	8,1/4,6
DCM-G 65-660/A/BAQE/0,55	360	DN 65	3x230-400 V ~	1400	0,8	0,55	0,75	2,6	1,5	-	MEC 80M	13,9/8
DCM-G 65-760/A/BAQE/0,55	360	DN 65	3x230-400 V ~	1390	0,8	0,55	0,75	2,6	1,5	-	MEC 80M	13,9/8
DCM-G 65-920/A/BAQE/0,75	360	DN 65	3x230-400 V ~	1430	1,2	0,75	1	3,12	1,8	IE3	MEC 80M	17,2/9,9

MODEL	A	B	B1	B2	B max	C	D	D1	D2	D3	D4	no. of holes	H	H1	H2	L	L1	L2	M	N	PACKING DIMENSIONS			VOL. (m ³)	WEIGHT Kg
																					L/A	L/B	H		
																					DCM-G 65-420/A/BAQE/0,25	330	569		
DCM-G 65-540/A/BAQE/0,37	330	569	315	320	635	639	65	122	185	145	18	479	107	100	360	151	207	M16	180	358	635	479	0,11	112	
DCM-G 65-660/A/BAQE/0,55	330	569	315	320	635	639	65	122	185	145	18	534	107	100	360	151	207	M16	180	358	635	534	0,12	136	
DCM-G 65-760/A/BAQE/0,55	330	569	315	320	635	639	65	122	185	145	18	534	107	100	360	151	207	M16	180	358	635	534	0,12	135	
DCM-G 65-920/A/BAQE/0,75	330	569	315	320	635	639	65	122	185	145	18	511	107	100	360	151	207	M16	180	358	635	534	0,12	126	

DCM-G 65 4 POLES - IN-LINE PUMPS

Pumped liquid temperature range: from -10 °C to +140 °C - Maximum ambient temperature: +40 °C



The performance curves are based on kinematic viscosity values = 1 mm²/s and density equal to 1000 kg/m³. Curve tolerance according to ISO 9906.

For the MEI index refer to the hydraulic data of the individual pump.

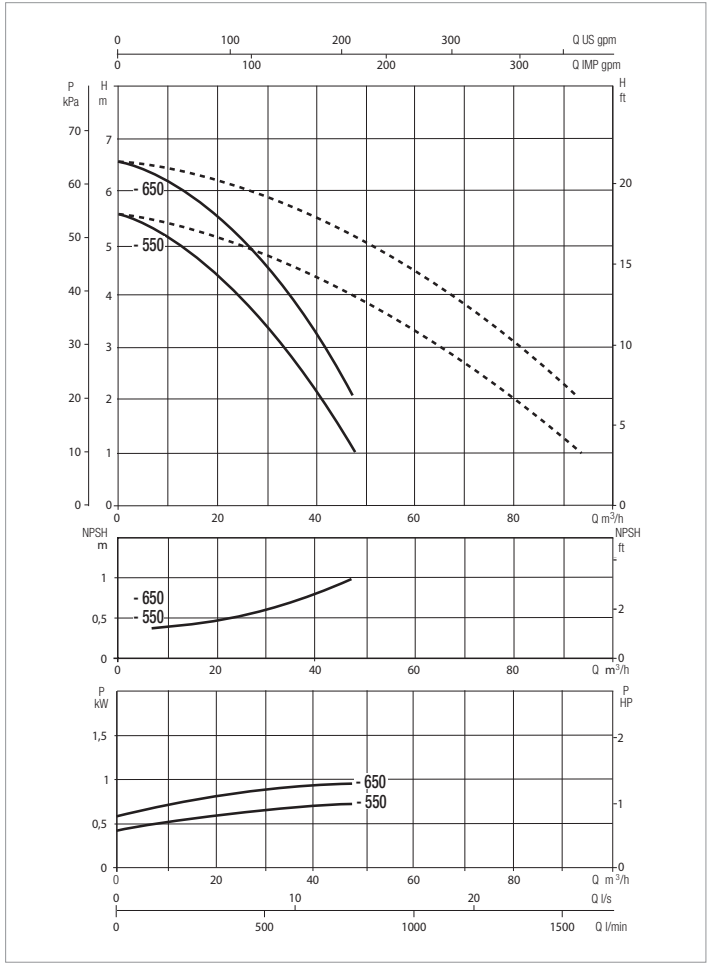
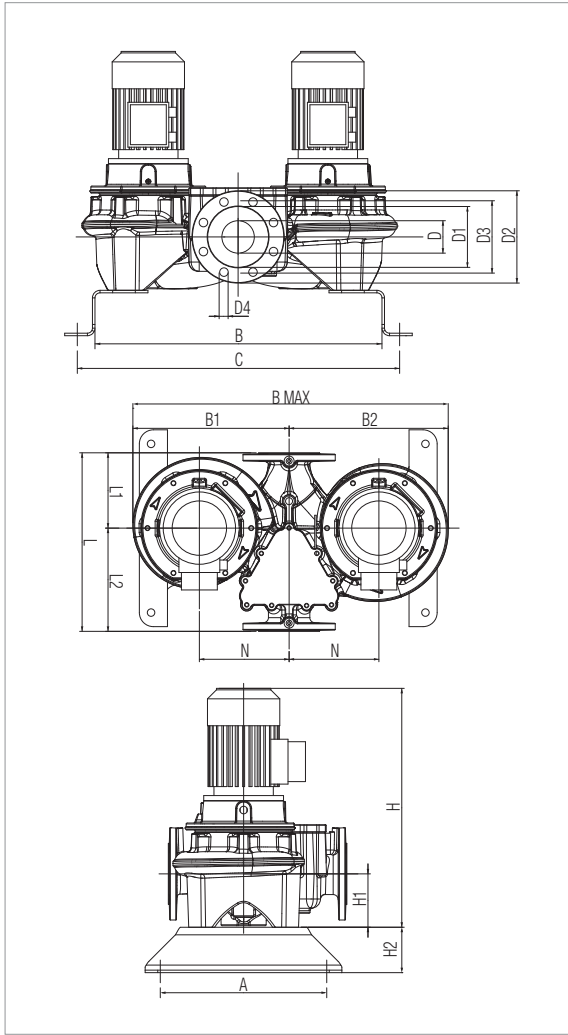
MODEL	CENTRE DISTANCE	PUMP CONNECTIONS	ELECTRICAL DATA									
			POWER INPUT 50 Hz	n r.p.m.	P1 MAX KW	P2 NOMINAL		In A		MOTOR TYPE	MOTOR SIZE	I st. A
						kW	HP	230 V	400 V			
DCM-G 65-1080/A/BAQE/1,1	475	DN 65	3x230-400V ~	1435	1,6	1,1	1,5	4,33	2,5	IE3	MEC 90S	30,7/17,8
DCM-G 65-1200/A/BAQE/1,5	475	DN 65	3x230-400V ~	1430	2	1,5	2	6,24	3,6	IE3	MEC 90L	41,2/23,8
DCM-G 65-1530/A/BAQE/2,2	475	DN 65	3x230-400V ~	1455	2,9	2,2	3	10,22	5,9	IE3	MEC 100L	60,3/34,8
DCM-G 65-1680/A/BAQE/3	475	DN 65	3x400V ~ ¹	1448	2,7	3	4	-	6,8	IE3	MEC 100L	55,1
DCM-G 65-2380/A/BAQE/4	475	DN 65	3x400V ~ ¹	1449	4,3	4	5,5	-	8,2	IE3	MEC 112M	57,8

¹ star start-up possible (Δ)

MODEL	A	B	B1	B2	B max	C	D	D1	D2	D3	D4	no. of holes	H	H1	H2	L	L1	L2	M	N	PACKING DIMENSIONS			VOL. (m ³)	WEIGHT Kg
																					L/A	L/B	H		
																					DCM-G 65-1080/A/BAQE/1,1	330	649		
DCM-G 65-1200/A/BAQE/1,5	330	649	387	395	782	719	65	122	185	145	18	4	597	125	100	475	177	298	M16	220	475	782	625	0,23	161
DCM-G 65-1530/A/BAQE/2,2	330	649	387	395	782	719	65	122	185	145	18	4	623	125	100	475	177	298	M16	220	475	782	644	0,24	173
DCM-G 65-1680/A/BAQE/3	330	649	387	395	782	719	65	122	185	145	18	4	623	125	100	475	177	298	M16	220	475	782	644	0,24	166
DCM-G 65-2380/A/BAQE/4	330	649	387	395	782	719	65	122	185	145	18	4	717	125	100	475	177	298	M16	220	475	782	729	0,27	188

DCM-G 80 4 POLES - IN-LINE PUMPS

Pumped liquid temperature range: from -10 °C to +140 °C - Maximum ambient temperature: +40 °C



The performance curves are based on kinematic viscosity values = 1 mm²/s and density equal to 1000 kg/m³. Curve tolerance according to ISO 9906.

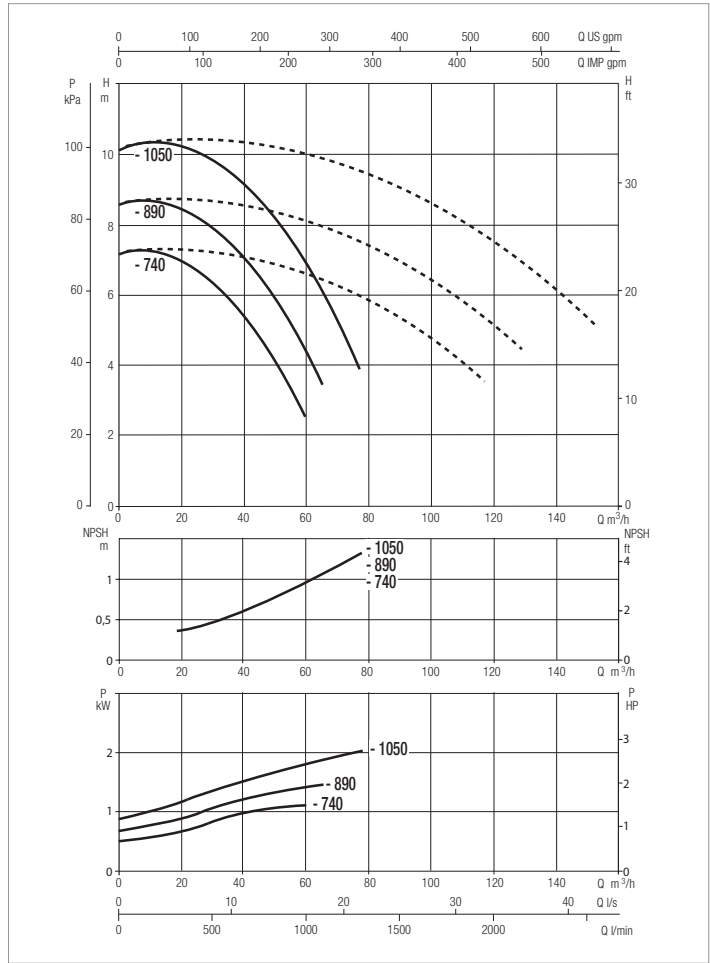
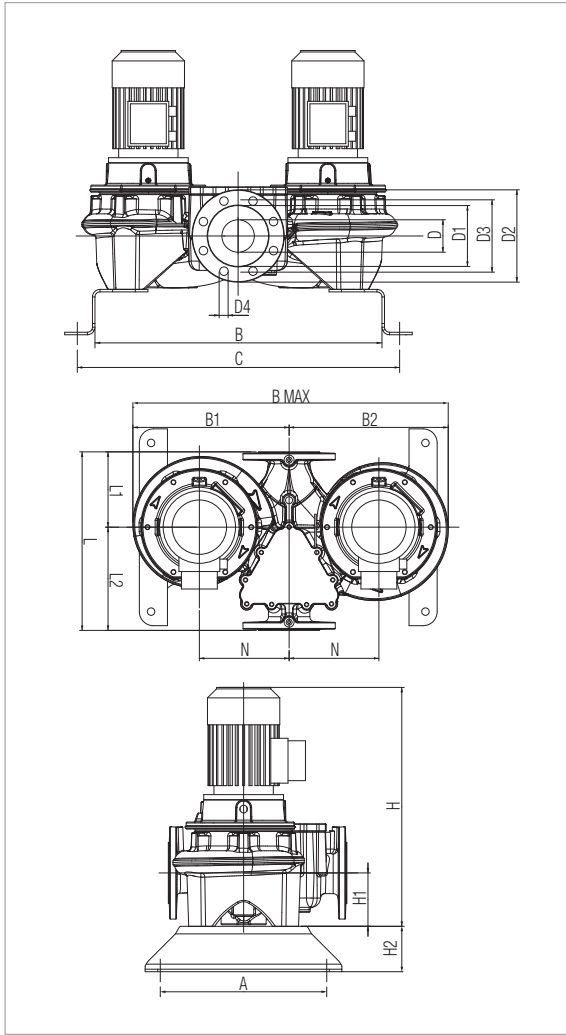
For the MEI index refer to the hydraulic data of the individual pump.

MODEL	CENTRE DISTANCE	PUMP CONNECTIONS	ELECTRICAL DATA									
			POWER INPUT 50 Hz	n r.p.m.	P1 MAX KW	P2 NOMINAL		In A		MOTOR TYPE	MOTOR SIZE	I st. A
						kW	HP	230 V	400 V			
DCM-G 80-550/A/BAQE/0,55	360	DN 80	3x230-400V ~	1390	0,8	0,55	0,75	2,6	1,5	-	MEC-80M	13,9/8
DCM-G 80-650/A/BAQE/0,75	360	DN 80	3x230-400V ~	1430	1,2	0,75	1	3,12	1,8	IE3	MEC-80M	17,2/9,9

MODEL	A	B	B1	B2	B max	C	D	D1	D2	D3	D4	no. of holes	H	H1	H2	L	L1	L2	M	N	PACKING DIMENSIONS			VOL. (m ³)	WEIGHT Kg
																					L/A	L/B	H		
DCM-G 80-550/A/BAQE/0,55	330	580	305	310	615	650	80	137	200	160	18	8	546	115	100	360	165	195	M16	180	360	615	546	0,12	126
DCM-G 80-650/A/BAQE/0,75	330	580	305	310	615	650	80	137	200	160	18	8	523	115	100	360	165	195	M16	180	360	615	546	0,12	116

DCM-G 80 4 POLES - IN-LINE PUMPS

Pumped liquid temperature range: from -10 °C to +140 °C - Maximum ambient temperature: +40 °C



The performance curves are based on kinematic viscosity values = 1 mm²/s and density equal to 1000 kg/m³. Curve tolerance according to ISO 9906.

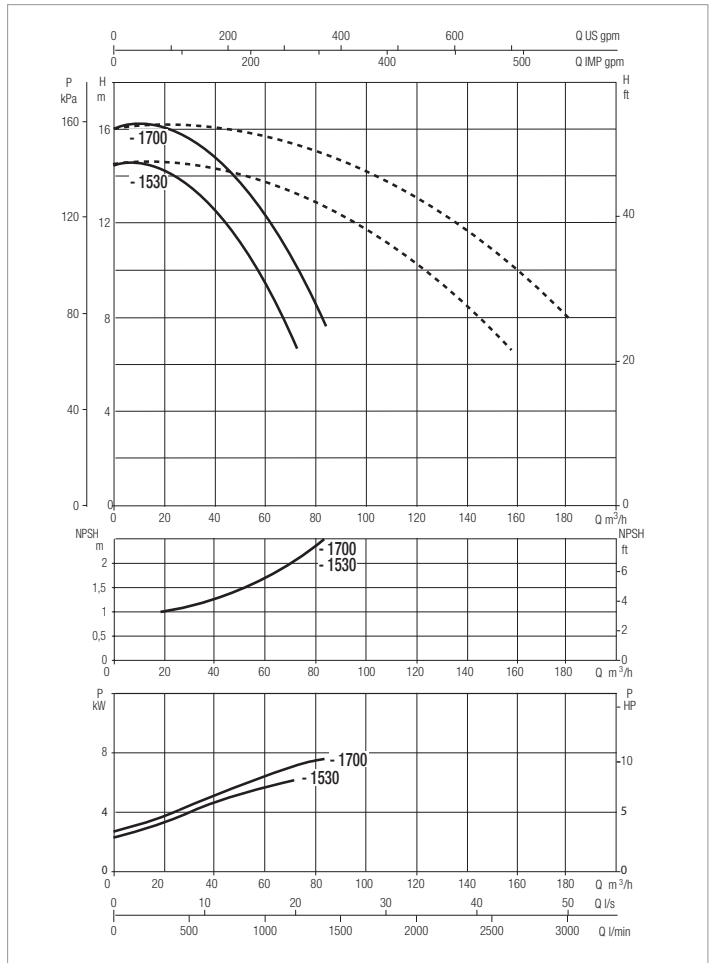
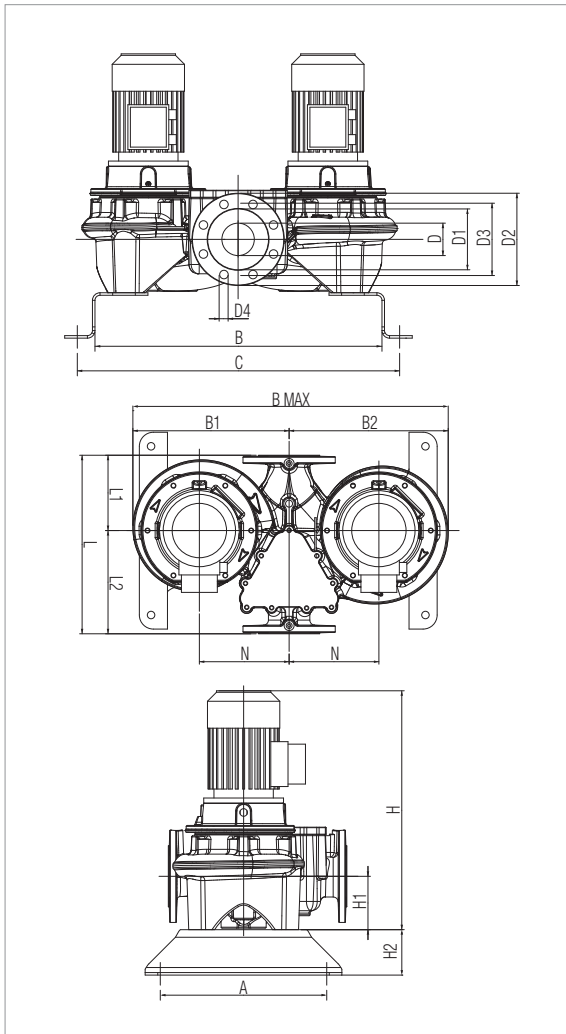
For the MEI index refer to the hydraulic data of the individual pump.

MODEL	CENTRE DISTANCE	PUMP CONNECTIONS	ELECTRICAL DATA									
			POWER INPUT 50 Hz	n r.p.m.	P1 MAX KW	P2 NOMINAL		In A		MOTOR TYPE	MOTOR SIZE	I st. A
						kW	HP	230 V	400 V			
DCM-G 80-740/A/BAQE/1,1	440	DN 80	3x230-400 V ~	1439	1,5	1,1	1,5	4,33	2,5	IE3	MEC 90S	30,7/17,8
DCM-G 80-890/A/BAQE/1,5	440	DN 80	3x230-400 V ~	1430	2	1,5	2	6,24	3,6	IE3	MEC 90L	41,2/23,8
DCM-G 80-1050/A/BAQE/2,2	440	DN 80	3x230-400 V ~	1450	2,4	2,2	3	10,22	5,9	IE3	MEC 100L	60,3/34,8

MODEL	A	B	B1	B2	B max	C	D	D1	D2	D3	D4	no. of holes	H	H1	H2	L	L1	L2	M	N	PACKING DIMENSIONS			VOL. (m ³)	WEIGHT Kg
																					L/A	L/B	H		
DCM-G 80-740/A/BAQE/1,1	330	620	355	365	720	690	80	137	200	160	18	8	563	115	100	440	180	260	M16	200	440	720	586	0,19	178
DCM-G 80-890/A/BAQE/1,5	330	620	355	365	720	690	80	137	200	160	18		598	115	100	440	180	260	M16	200	440	720	626	0,2	179
DCM-G 80-1050/A/BAQE/2,2	330	620	355	365	720	690	80	137	200	160	18		623	115	100	440	180	260	M16	200	440	720	644	0,2	203

DCM-G 80 4 POLES - IN-LINE PUMPS

Pumped liquid temperature range: from -10 °C to +140 °C - Maximum ambient temperature: +40 °C



The performance curves are based on kinematic viscosity values = 1 mm²/s and density equal to 1000 kg/m³. Curve tolerance according to ISO 9906.

For the MEI index refer to the hydraulic data of the individual pump.

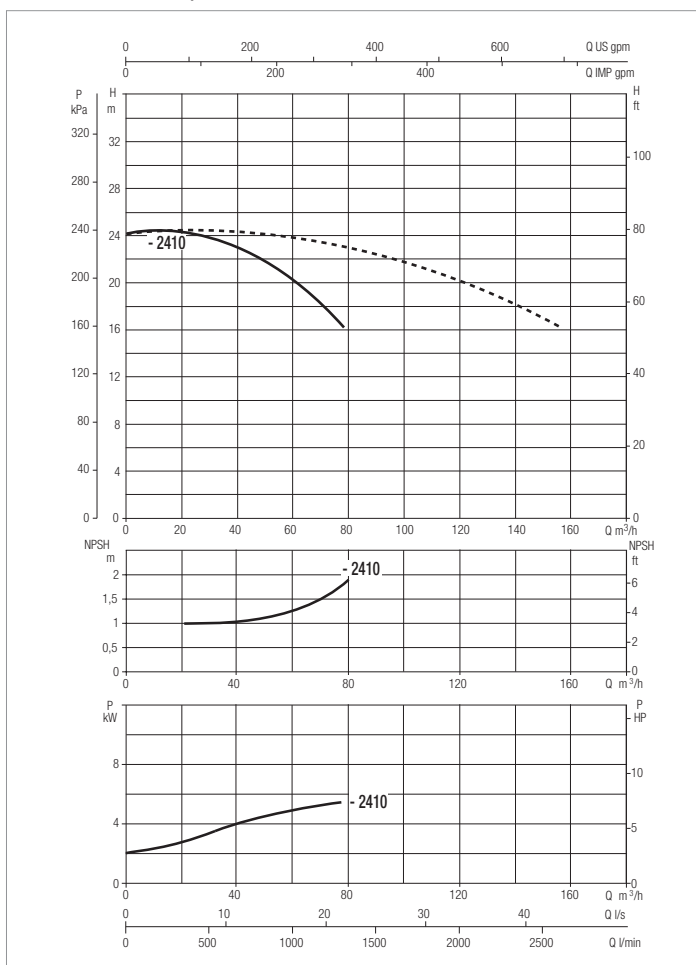
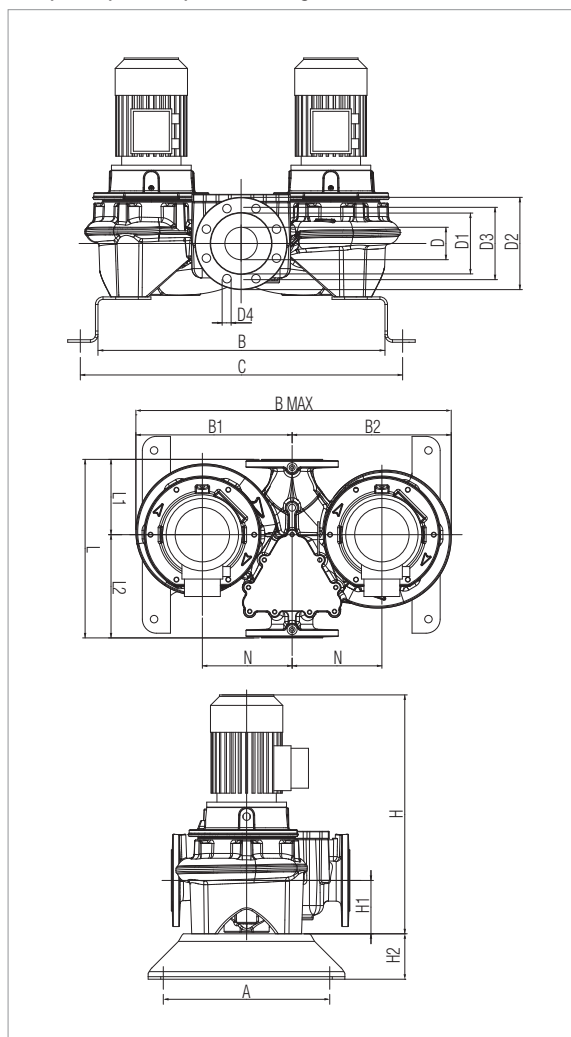
MODEL	CENTRE DISTANCE	PUMP CONNECTIONS	ELECTRICAL DATA									
			POWER INPUT 50 Hz	n r.p.m.	P1 MAX KW	P2 NOMINAL		In A		MOTOR TYPE	MOTOR SIZE	I st. A
DCM-G 80-1530/A/BAQE/3	500	DN 80	3 x 400 V ~ ¹	1441	3,6	3	4	-	6,8	IE3	MEC 100L	55,1
DCM-G 80-1700/A/BAQE/4	500	DN 80	3 x 400 V ~ ¹	1452	3,9	4	5,5	-	8,2	IE3	MEC 112M	57,8

¹ star start-up possible (A)

MODEL	A	B	B1	B2	B max	C	D	D1	D2	D3	D4	no. of holes	H	H1	H2	L	L1	L2	M	N	PACKING DIMENSIONS			VOL. (m ³)	WEIGHT Kg
																					L/A	L/B	H		
DCM-G 80-1530/A/BAQE/3	362	662	405	415	820	732	80	137	200	160	18	8	629	115	100	500	220	280	M16	235	500	820	650	0,27	211
DCM-G 80-1700/A/BAQE/4	362	662	405	415	820	732	80	137	200	160	18		723	115	100	500	220	280	M16	235	500	820	735	0,3	232

DCM-G 80 4 POLES - IN-LINE PUMPS

Pumped liquid temperature range: from -10 °C to +140 °C - Maximum ambient temperature: +40 °C



The performance curves are based on kinematic viscosity values = 1 mm²/s and density equal to 1000 kg/m³. Curve tolerance according to ISO 9906.

For the MEI index refer to the hydraulic data of the individual pump.

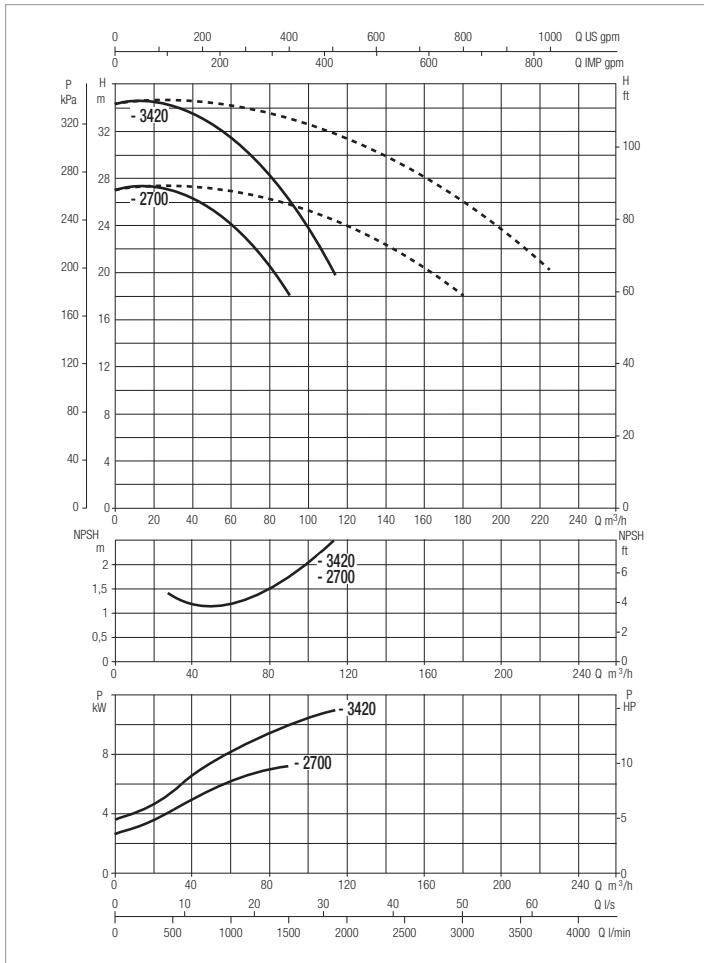
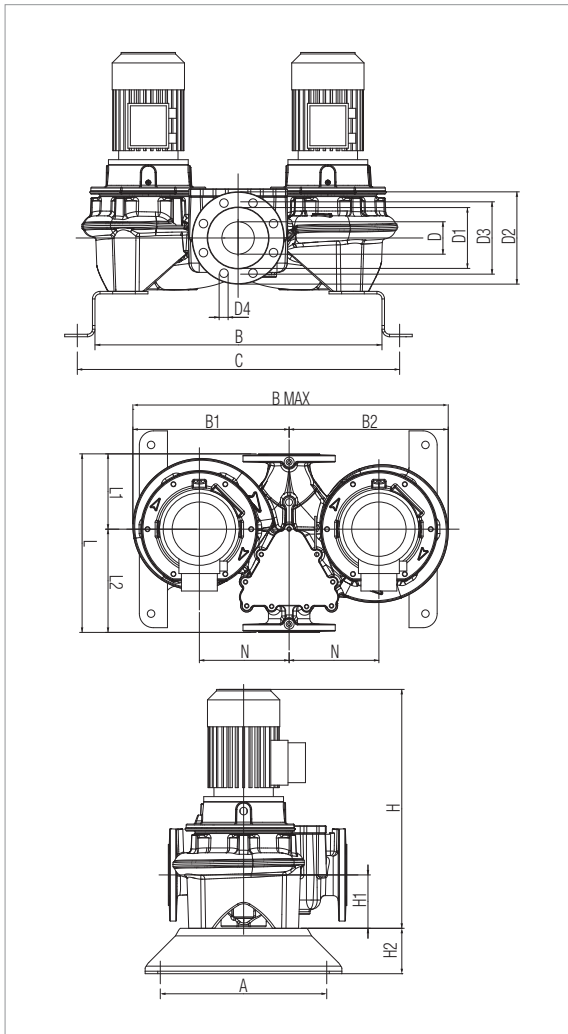
MODEL	CENTRE DISTANCE	PUMP CONNECTIONS	ELECTRICAL DATA								MOTOR TYPE	MOTOR SIZE	I st. A
			POWER INPUT 50 Hz	n r.p.m.	P1 MAX KW	P2 NOMINAL		In A					
DCM-G 80-2410/A/BAQE/5,5	620	DN 80	3 x 400 V ~ ¹	1461	6,5	5,5	7,5	-	10,6	IE3	MEC 132S	92,2	

¹ star start-up possible (A)

MODEL	A	B	B1	B2	B max	C	D	D1	D2	D3	D4	no. of holes	H	H1	H2	L	L1	L2	M	N	PACKING DIMENSIONS			VOL. (m ³)	WEIGHT Kg
																					L/A	L/B	H		
DCM-G 80-2410/A/BAQE/5,5	500	804	530	540	1070	924	80	137	200	160	18	8	775	140	100	620	280	340	M16	300	620	1070	803	0,53	447

DCM-G 80 4 POLES - IN-LINE PUMPS

Pumped liquid temperature range: from -10 °C to +140 °C - Maximum ambient temperature: +40 °C



The performance curves are based on kinematic viscosity values = 1 mm²/s and density equal to 1000 kg/m³. Curve tolerance according to ISO 9906.

For the MEI index refer to the hydraulic data of the individual pump.

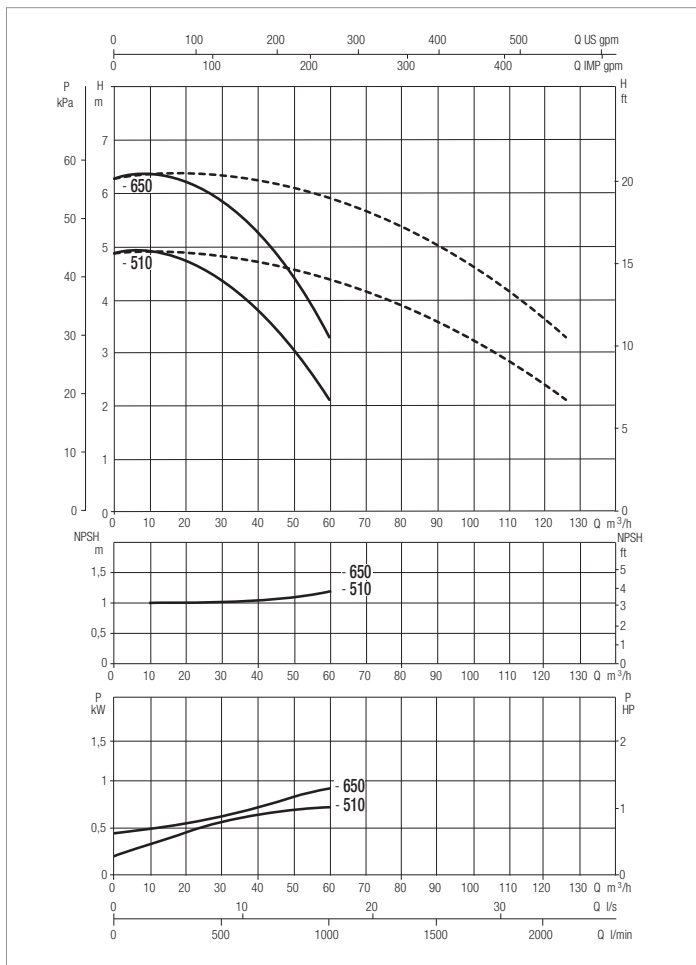
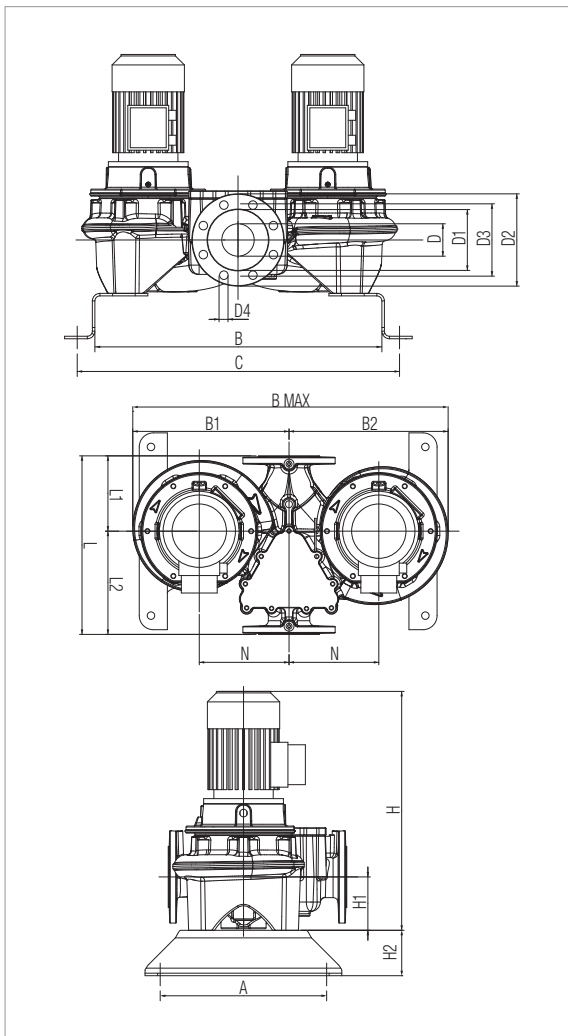
MODEL	CENTRE DISTANCE	PUMP CONNECTIONS	ELECTRICAL DATA									
			POWER INPUT 50 Hz	n r.p.m.	P1 MAX KW	P2 NOMINAL		In A		MOTOR TYPE	MOTOR SIZE	I st. A
						kW	HP	230 V	400 V			
DCM-G 80-2700/A/BAQE/7,5	620	DN 80	3 x 400 V ~ ¹	1463	8,7	7,5	10	-	14,4	IE3	MEC 132M	124,1
DCM-G 80-3420/A/BAQE/11	620	DN 80	3 x 400 V ~ ¹	1472	12,7	11	15	-	22,4	IE3	MEC 160M	172,2

¹ star start-up possible (A)

MODEL	A	B	B1	B2	B max	C	D	D1	D2	D3	D4	no. of holes	H	H1	H2	L	L1	L2	M	N	PACKING DIMENSIONS			VOL. (m ³)	WEIGHT Kg
																					L/A	L/B	H		
DCM-G 80-2700/A/BAQE/7,5	500	804	530	540	1070	924	80	137	200	160	18	8	850	140	100	620	280	340	M16	300	620	1070	843	0,56	468
DCM-G 80-3420/A/BAQE/11	500	804	530	540	1070	924	80	137	200	160	18		948	140	100	620	280	340	M16	300	620	1070	948	0,63	502

DCM-G 100 4 POLES - IN-LINE PUMPS

Pumped liquid temperature range: from -10 °C to +140 °C - Maximum ambient temperature: +40 °C



The performance curves are based on kinematic viscosity values = 1 mm²/s and density equal to 1000 kg/m³. Curve tolerance according to ISO 9906.

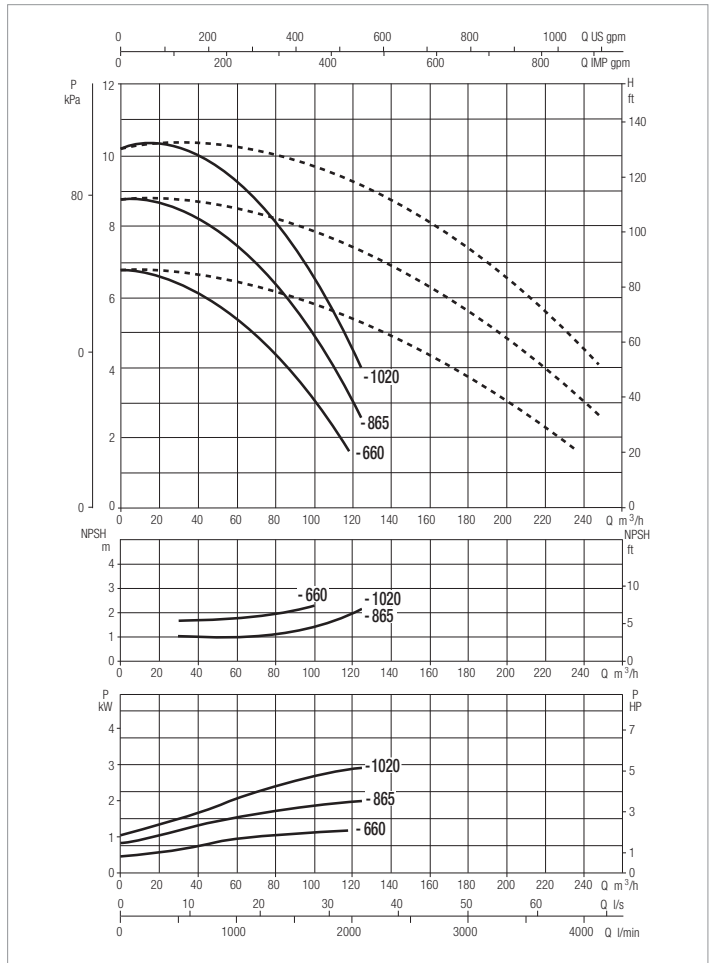
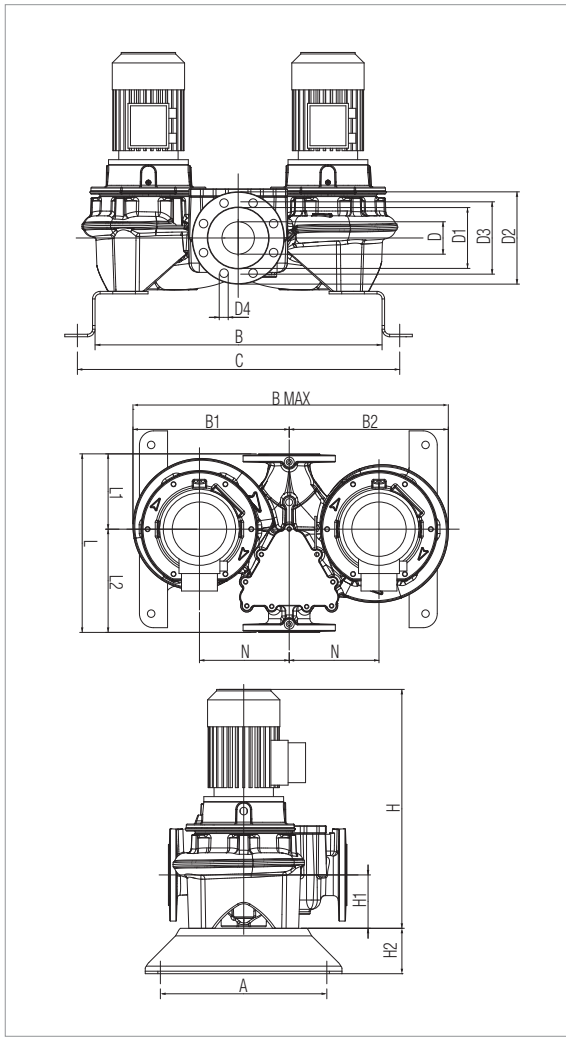
For the MEI index refer to the hydraulic data of the individual pump.

MODEL	CENTRE DISTANCE	PUMP CONNECTIONS	ELECTRICAL DATA									
			POWER INPUT 50 Hz	n r.p.m.	P1 MAX KW	P2 NOMINAL		In A		MOTOR TYPE	MOTOR SIZE	I st. A
						kW	HP	230 V	400 V			
DCM-G 100-510/A/BAQE/0,75	500	DN 100	3x230-400 V ~	1430	1,2	0,75	1	3,12	1,8	IE3	MEC 80M	17,2/9,9
DCM-G 100-650/A/BAQE/1,1	500	DN 100	3x230-400 V ~	1440	1,4	1,1	1,5	4,33	2,5	IE3	MEC 90S	30,7/17,8

MODEL	A	B	B1	B2	B max	C	D	D1	D2	D3	D4	no. of holes	H	H1	H2	L	L1	L2	M	N	PACKING DIMENSIONS			VOL. (m ³)	WEIGHT Kg
																					L/A	L/B	H		
DCM-G 100-510/A/BAQE/0,75	362	637	330	345	675	717	100	156	220	180	18	8	550	140	100	500	191	309	M16	200	500	675	573	0,19	200
DCM-G 100-650/A/BAQE/1,1	362	637	330	345	675	717	100	156	220	180	18		585	140	100	500	191	309	M16	200	500	675	613	0,21	202

DCM-G 100 4 POLES - IN-LINE PUMPS

Pumped liquid temperature range: from -10 °C to +140 °C - Maximum ambient temperature: +40 °C



The performance curves are based on kinematic viscosity values = 1 mm²/s and density equal to 1000 kg/m³. Curve tolerance according to ISO 9906.

For the MEI index refer to the hydraulic data of the individual pump.

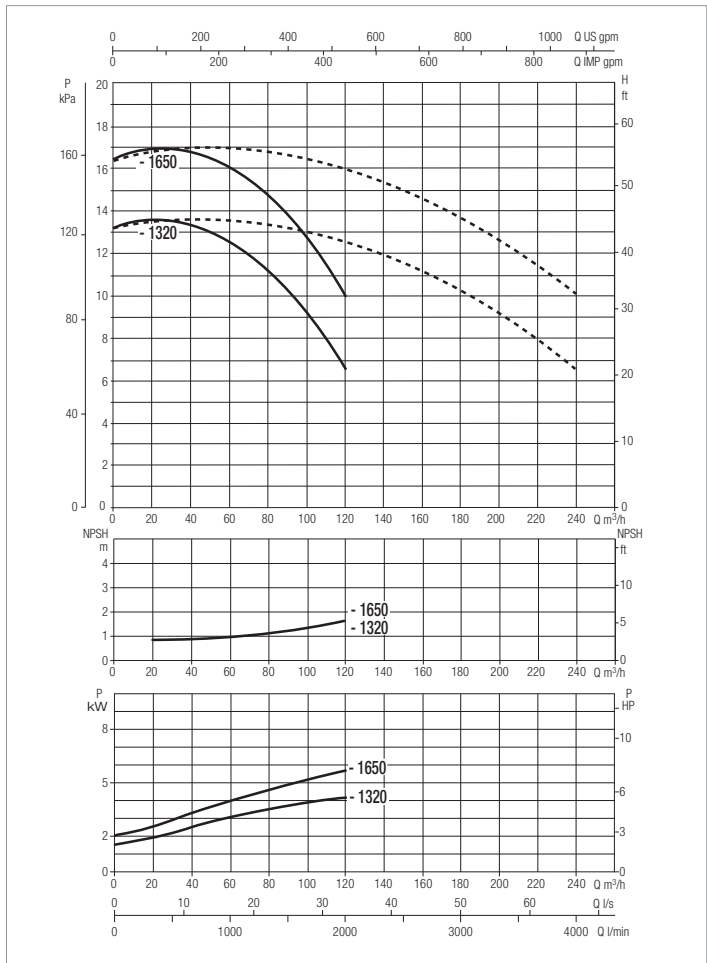
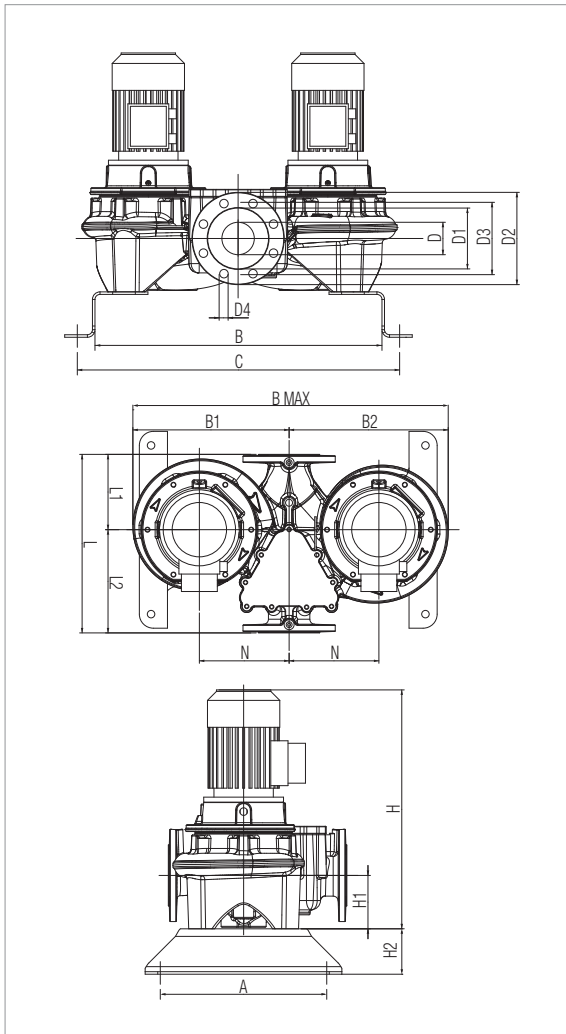
MODEL	CENTRE DISTANCE	PUMP CONNECTIONS	ELECTRICAL DATA									
			POWER INPUT 50 Hz	n r.p.m.	P1 MAX KW	P2 NOMINAL		In A		MOTOR TYPE	MOTOR SIZE	I st. A
						kW	HP	230 V	400 V			
DCM-G 100-660/A/BAQE/1,5	550	DN 100	3x230-400 V ~	1430	2	1,5	2	6,24	3,6	IE3	MEC 90L	41,2/23,8
DCM-G 100-865/A/BAQE/2,2	550	DN 100	3x230-400 V ~	1455	3	2,2	3	10,22	5,9	IE3	MEC 100L	60,3/34,8
DCM-G 100-1020/A/BAQE/3	550	DN 100	3x400V ~ ¹	1441	3,6	3	4	-	6,8	IE3	MEC 100L	55,1

¹ star start-up possible (Δ)

MODEL	A	B	B1	B2	B max	C	D	D1	D2	D3	D4	no. of holes	H	H1	H2	L	L1	L2	M	N	PACKING DIMENSIONS			VOL. (m ³)	WEIGHT Kg
																					L/A	L/B	H		
DCM-G 100-660/A/BAQE/1,5	362	733	395	410	805	813	100	156	220	180	18	8	620	140	100	550	221	329	M16	235	550	805	648	0,29	229
DCM-G 100-865/A/BAQE/2,2	362	733	395	410	805	813	100	156	220	180	18		645	140	100	550	221	329	M16	235	550	805	666	0,29	225
DCM-G 100-1020/A/BAQE/3	362	733	395	410	805	813	100	156	220	180	18		645	140	100	550	221	329	M16	235	550	805	666	0,29	224

DCM-G 100 4 POLES - IN-LINE PUMPS

Pumped liquid temperature range: from -10 °C to +140 °C - Maximum ambient temperature: +40 °C



The performance curves are based on kinematic viscosity values = 1 mm²/s and density equal to 1000 kg/m³. Curve tolerance according to ISO 9906.

For the MEI index refer to the hydraulic data of the individual pump.

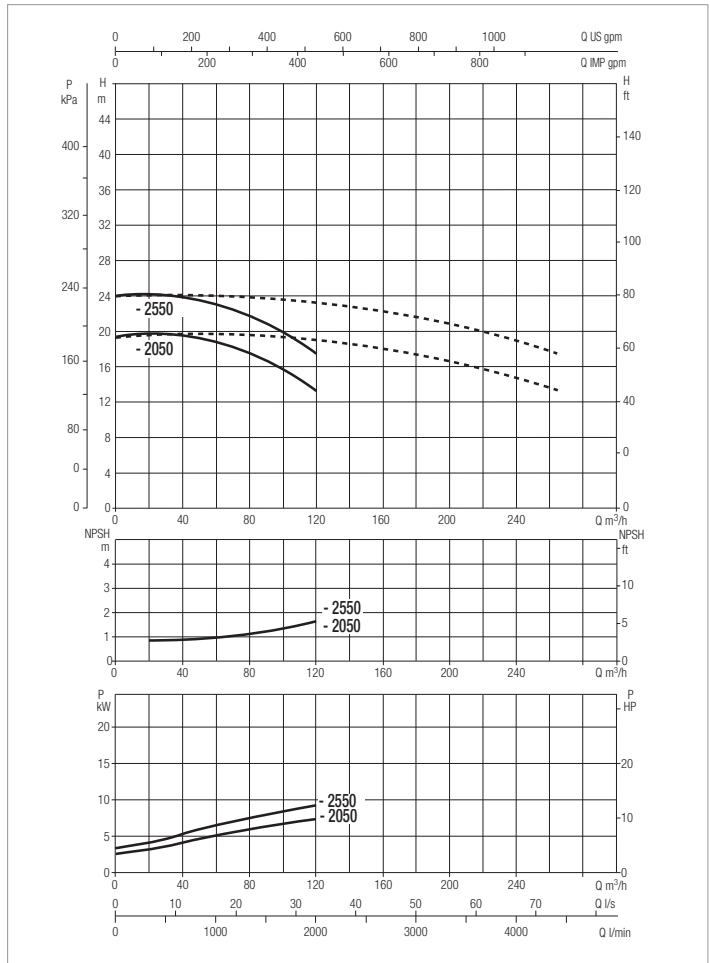
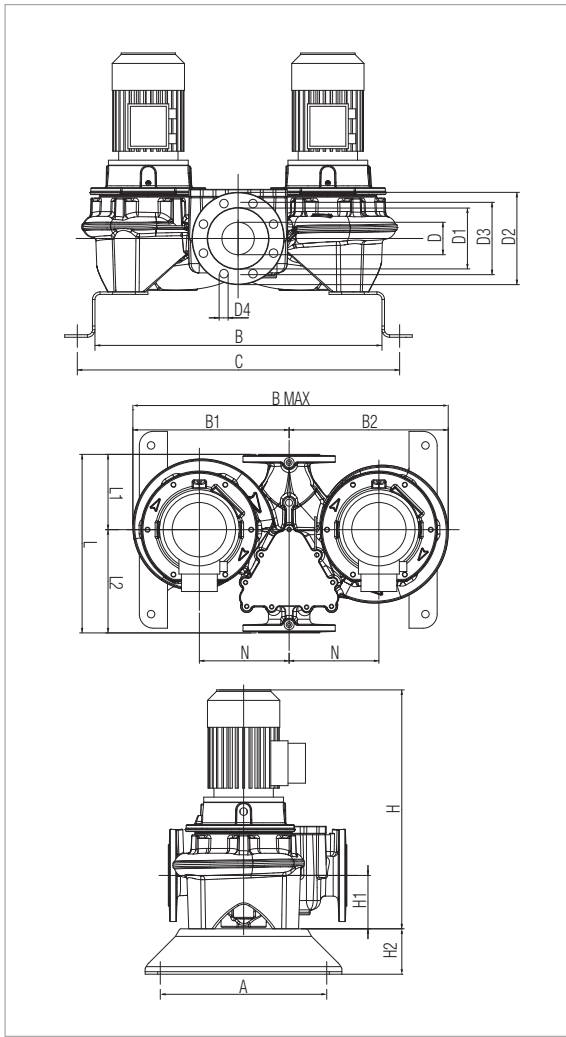
MODEL	CENTRE DISTANCE	PUMP CONNECTIONS	ELECTRICAL DATA									
			POWER INPUT 50 Hz	n r.p.m.	P1 MAX KW	P2 NOMINAL		In A		MOTOR TYPE	MOTOR SIZE	I st. A
						kW	HP	230 V	400 V			
DCM-G 100-1320/A/BAQE/4	550	DN 100	3 x 400 V ~ ¹	1450	4,6	4	5,5	-	8,2	IE3	MEC 112M	57,8
DCM-G 100-1650/A/BAQE/5,5	550	DN 100	3 x 400 V ~ ¹	1464	6,9	5,5	7,5	-	10,6	IE3	MEC 132S	92,2

¹ star start-up possible (Δ)

MODEL	A	B	B1	B2	B max	C	D	D1	D2	D3	D4	no. of holes	H	H1	H2	L	L1	L2	M	N	PACKING DIMENSIONS			VOL. (m ³)	WEIGHT Kg
																					L/A	L/B	H		
DCM-G 100-1320/A/BAQE/4	362	753	430	440	870	833	100	156	220	180	18	8	799	140	100	550	221	329	M16	250	550	870	811	0,39	263
DCM-G 100-1650/A/BAQE/5,5	362	753	430	440	870	833	100	156	220	180	18	8	784	140	100	550	221	329	M16	250	550	870	812	0,39	356

DCM-G 100 4 POLES - IN-LINE PUMPS

Pumped liquid temperature range: from -10 °C to +140 °C - Maximum ambient temperature: +40 °C



The performance curves are based on kinematic viscosity values = 1 mm²/s and density equal to 1000 kg/m³. Curve tolerance according to ISO 9906.

For the MEI index refer to the hydraulic data of the individual pump.

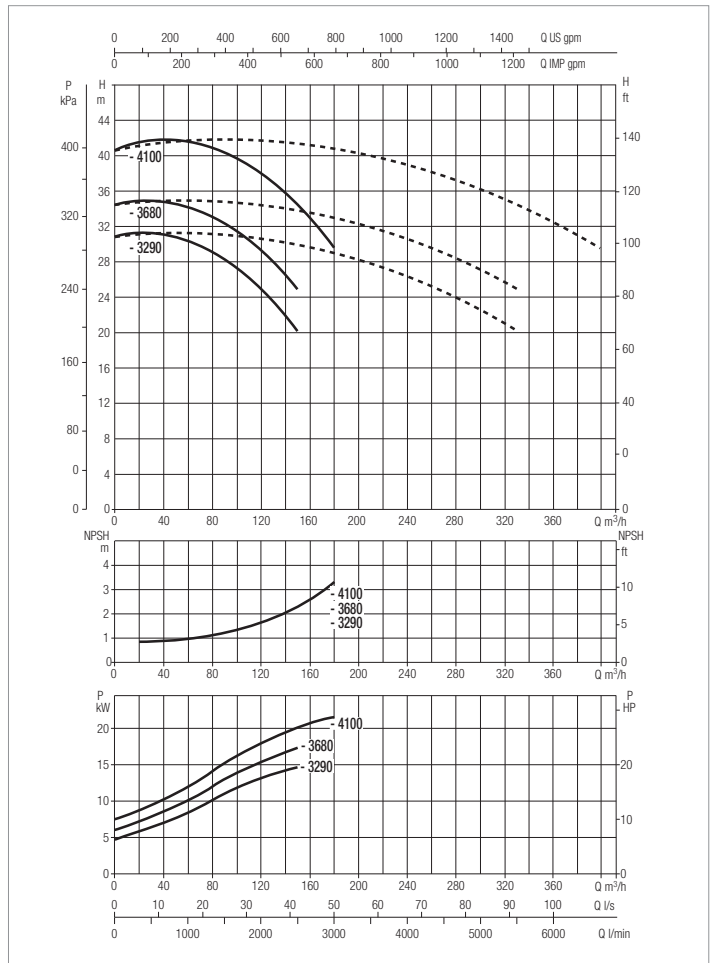
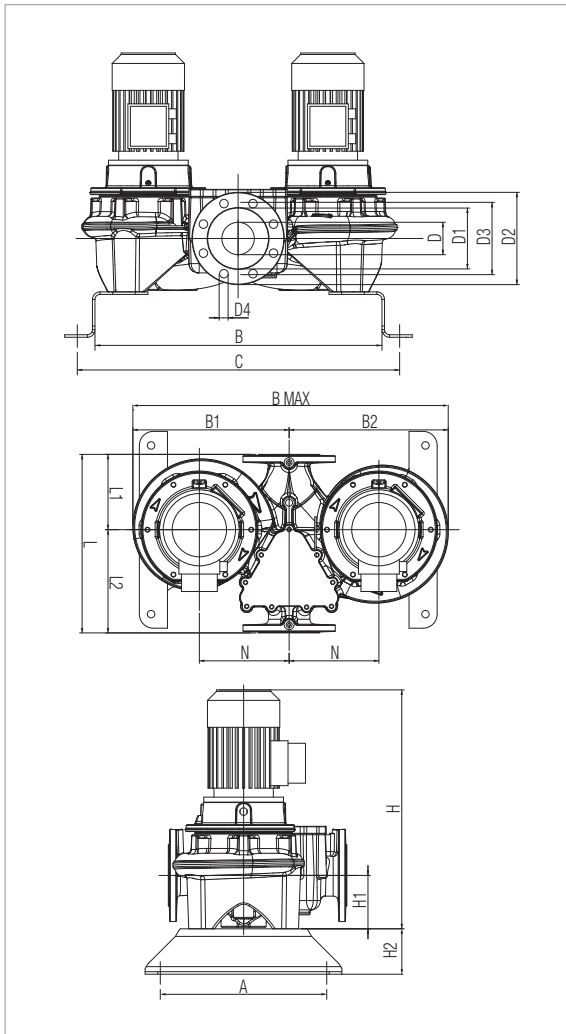
MODEL	CENTRE DISTANCE	PUMP CONNECTIONS	ELECTRICAL DATA									
			POWER INPUT 50 Hz	n r.p.m.	P1 MAX KW	P2 NOMINAL		In A		MOTOR TYPE	MOTOR SIZE	I st. A
						kW	HP	230 V	400 V			
DCM-G 100-2050/A/BAQE/7,5	670	DN 100	3x400V ~ ¹	1461	8,5	7,5	10	-	14,4	IE3	MEC 132M	124,1
DCM-G 100-2550/A/BAQE/11	670	DN 100	3x400V ~ ¹	1470	12,1	11	15	-	22,4	IE3	MEC 160M	172,2

¹ star start-up possible (A)

MODEL	A	B	B1	B2	B max	C	D	D1	D2	D3	D4	no. of holes	H	H1	H2	L	L1	L2	M	N	PACKING DIMENSIONS			VOL. (m ³)	WEIGHT Kg
																					L/A	L/B	H		
DCM-G 100-2050/A/BAQE/7,5	500	836	560	575	1135	956	100	156	220	180	18	18	895	175	100	670	266	404	M16	300	670	1135	888	0,68	527
DCM-G 100-2550/A/BAQE/11	500	836	560	575	1135	956	100	156	220	180	18		993	175	100	670	266	404	M16	300	670	1135	993	0,76	534

DCM-G 100 4 POLES - IN-LINE PUMPS

Pumped liquid temperature range: from -10 °C to +140 °C - Maximum ambient temperature: +40 °C



The performance curves are based on kinematic viscosity values = 1 mm²/s and density equal to 1000 kg/m³. Curve tolerance according to ISO 9906.

For the MEI index refer to the hydraulic data of the individual pump.

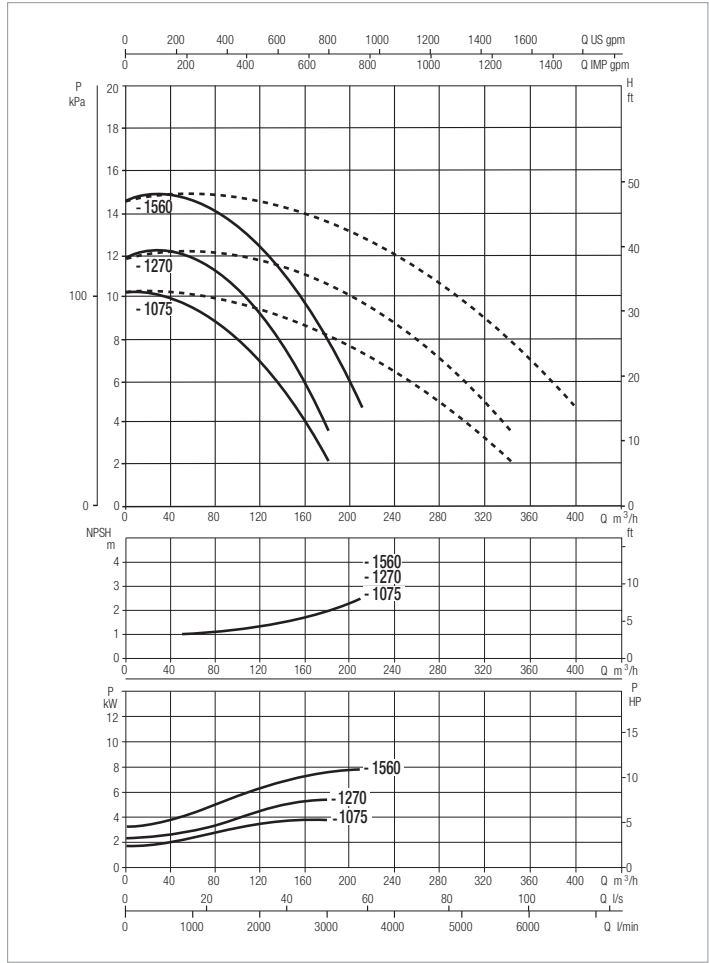
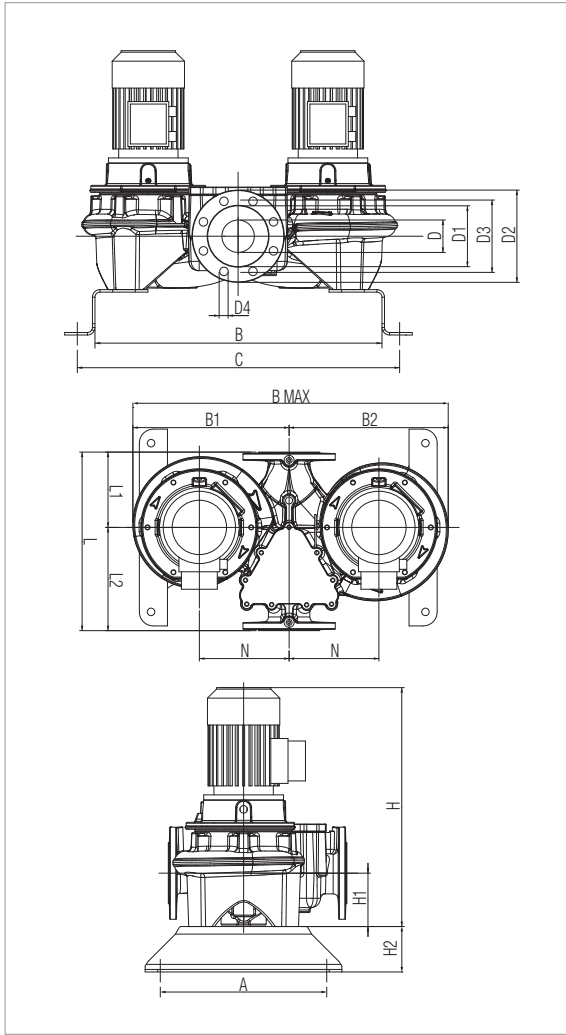
MODEL	CENTRE DISTANCE	PUMP CONNECTIONS	ELECTRICAL DATA									
			POWER INPUT 50 Hz	n r.p.m.	P1 MAX KW	P2 NOMINAL		In A		MOTOR TYPE	MOTOR SIZE	I st. A
					kW	HP	230 V	400 V				
DCM-G 100-3290/A/BAQE/15	670	DN 100	3 x 400 V ~ ¹	1471	17,1	15	20	-	30,5	IE3	MEC 160L	232,4
DCM-G 100-3680/A/BAQE/18,5	670	DN 100	3 x 400 V ~ ¹	1470	19,6	18,5	25	-	34,3	IE3	MEC 180M	268,6
DCM-G 100-4100/A/BAQE/22	670	DN 100	3 x 400 V ~ ¹	1470	22,4	22	30	-	40,2	IE3	MEC 180L	336,1

¹ star start-up possible (Δ)

MODEL	A	B	B1	B2	B max	C	D	D1	D2	D3	D4	no. of holes	H	H1	H2	L	L1	L2	M	N	PACKING DIMENSIONS			VOL. (m ³)	WEIGHT Kg
																					L/A	L/B	H		
DCM-G 100-3290/A/BAQE/15	500	836	560	575	1135	956	100	156	220	180	18	8	1036	175	100	670	266	404	M16	300	670	1135	1048	0,8	723
DCM-G 100-3680/A/BAQE/18,5	500	836	560	575	1135	956	100	156	220	180	18		1068	175	100	670	266	404	M16	300	670	1135	1068	0,81	860
DCM-G 100-4100/A/BAQE/22	500	836	560	575	1135	956	100	156	220	180	18		1106	175	100	670	266	404	M16	300	670	1135	1106	0,84	969

DCM-G 125 4 POLES - IN-LINE PUMPS

Pumped liquid temperature range: from -10 °C to +140 °C - Maximum ambient temperature: +40 °C



The performance curves are based on kinematic viscosity values = 1 mm²/s and density equal to 1000 kg/m³. Curve tolerance according to ISO 9906.
For the MEI index refer to the hydraulic data of the individual pump.

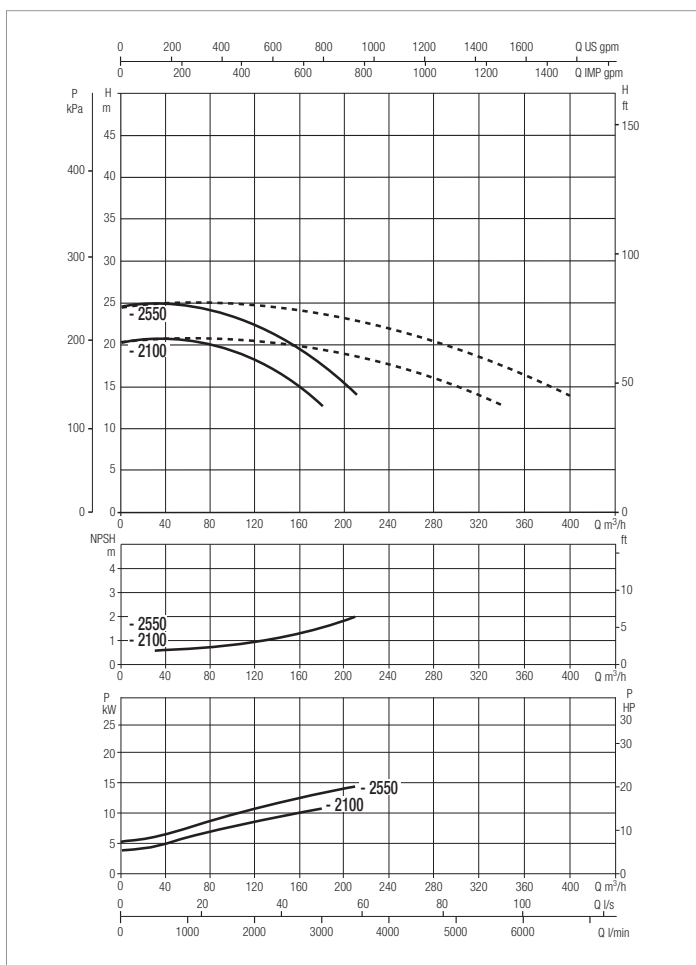
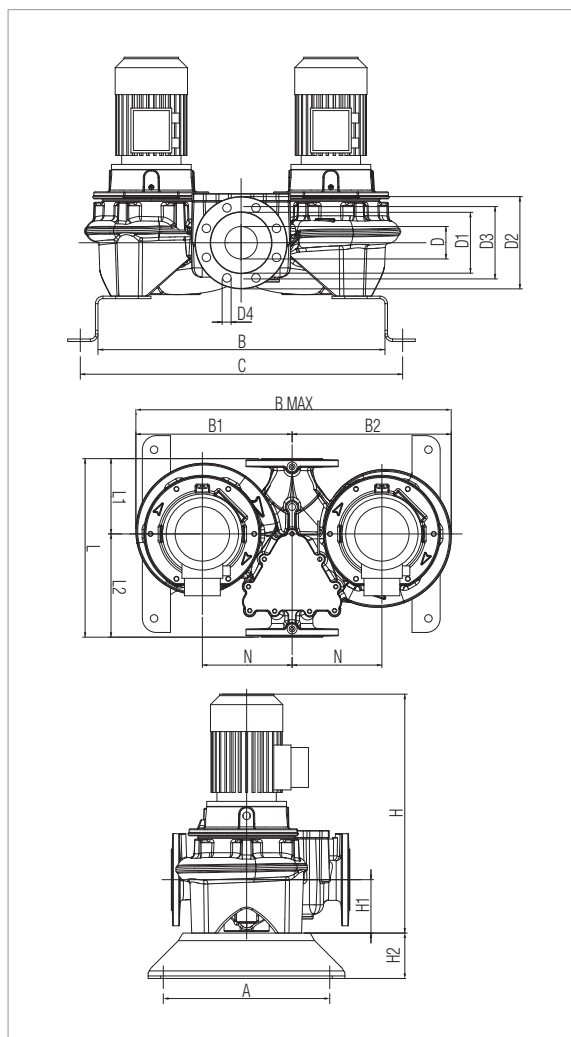
MODEL	CENTRE DISTANCE	PUMP CONNECTIONS	ELECTRICAL DATA										
			POWER INPUT 50 Hz	n r.p.m.	P1 MAX KW	P2 NOMINAL		In A		MOTOR TYPE	MOTOR SIZE	I st. A	
					KW	HP	230 V	400 V					
DCM-G 125-1075/A/BAQE/4	620	DN 125	3 x 400V ~ ¹	1455	5,1	4	5,5	-	8,2	IE3	MEC 112M	57,8	
DCM-G 125-1270/A/BAQE/5,5	620	DN 125	3 x 400V ~ ¹	1465	7,2	5,5	7,5	-	10,6	IE3	MEC 132S	92,2	
DCM-G 125-1560/A/BAQE/7,5	620	DN 125	3 x 400V ~ ¹	1469	9,5	7,5	10	-	14,4	IE3	MEC 132M	124,1	

¹ star start-up possible (A)

MODEL	A	B	B1	B2	B max	C	D	D1	D2	D3	D4	no. of holes	H	H1	H2	L	L1	L2	M	N	PACKING DIMENSIONS			VOL. (m ³)	WEIGHT Kg
																					L/A	L/B	H		
DCM-G 125-1075/A/BAQE/4	500	810	515	535	1050	930	125	185	250	210	14	8	885	215	100	620	226	394	M16	300	620	1050	897	0,58	456
DCM-G 125-1270/A/BAQE/5,5	500	810	515	535	1050	930	125	185	250	210	14		885	215	100	620	226	394	M16	300	620	1050	893	0,58	508
DCM-G 125-1560/A/BAQE/7,5	500	810	515	535	1050	930	125	185	250	210	14		905	215	100	620	226	394	M16	300	620	1050	933	0,61	507

DCM-G 125 4 POLES - IN-LINE PUMPS

Pumped liquid temperature range: from -10 °C to +140 °C - Maximum ambient temperature: +40 °C



The performance curves are based on kinematic viscosity values = 1 mm²/s and density equal to 1000 kg/m³. Curve tolerance according to ISO 9906.
For the MEI index refer to the hydraulic data of the individual pump.

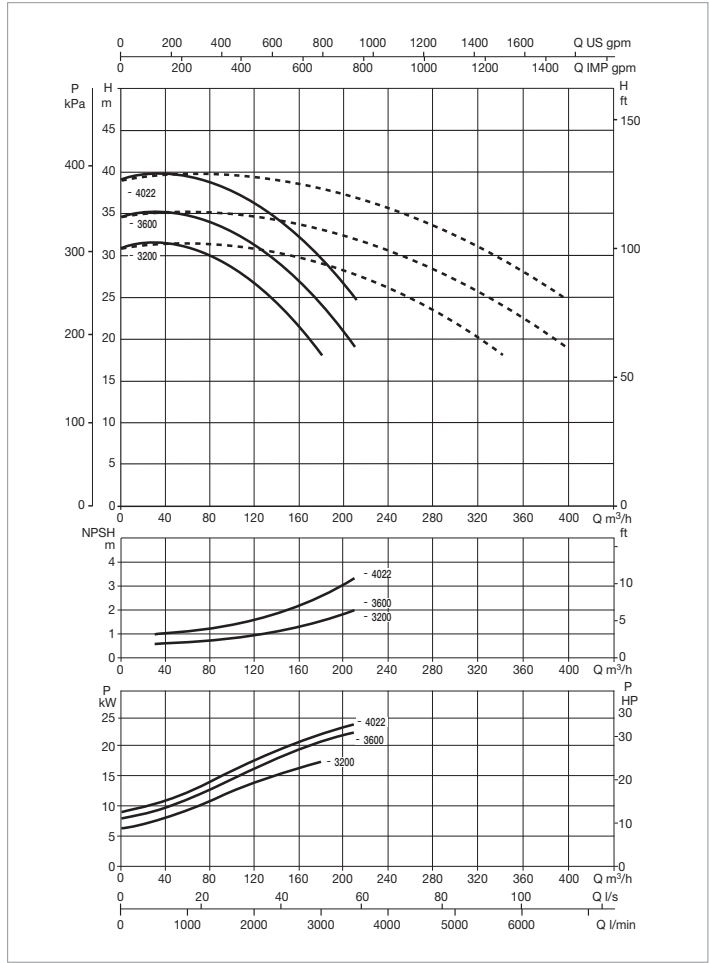
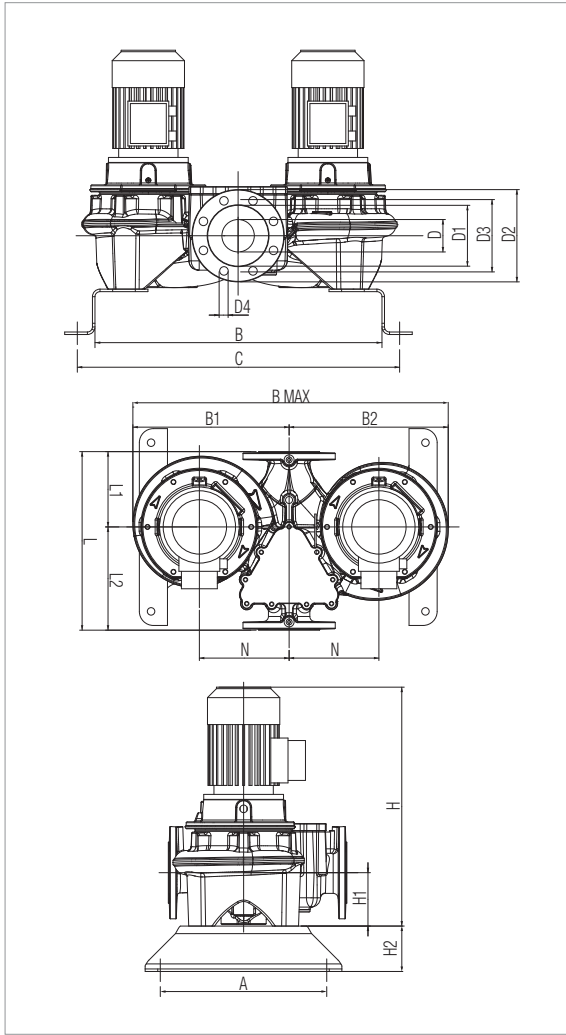
MODEL	CENTRE DISTANCE	PUMP CONNECTIONS	ELECTRICAL DATA									
			POWER INPUT 50 Hz	n r.p.m.	P1 MAX KW	P2 NOMINAL		In A		MOTOR TYPE	MOTOR SIZE	I st. A
						kW	HP	230 V	400 V			
DCM-G 125-2100/A/BAQE/11	800	DN 125	3 x 400 V ~ ¹	1475	13,6	11	15	-	22,4	IE3	MEC 160M	172,2
DCM-G 125-2550/A/BAQE/15	800	DN 125	3 x 400 V ~ ¹	1470	16,3	15	20	-	30,5	IE3	MEC 160L	232,4

¹ star start-up possible (A)

MODEL	A	B	B1	B2	B max	C	D	D1	D2	D3	D4	no. of holes	H	H1	H2	L	L1	L2	M	N	PACKING DIMENSIONS			VOL. (m ³)	WEIGHT Kg
																					L/A	L/B	H		
DCM-G 125-2100/A/BAQE/11	500	810	555	571	1126	930	125	185	250	210	14	8	1038	215	100	800	316	484	M16	300	800	1126	1053	0,95	737
DCM-G 125-2550/A/BAQE/15	500	810	555	571	1126	930	125	185	250	210	14	8	1096	215	100	800	316	484	M16	300	800	1126	1108	1	850

DCM-G 125 4 POLES - IN-LINE PUMPS

Pumped liquid temperature range: from -10 °C to +140 °C - Maximum ambient temperature: +40 °C



The performance curves are based on kinematic viscosity values = 1 mm²/s and density equal to 1000 kg/m³. Curve tolerance according to ISO 9906.

For the MEI index refer to the hydraulic data of the individual pump.

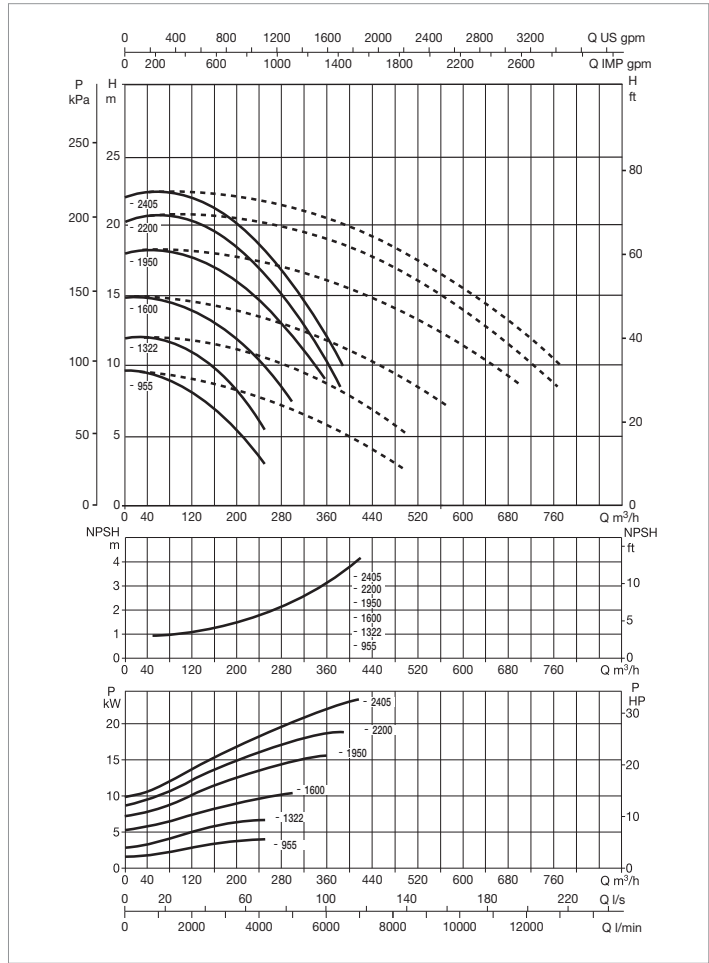
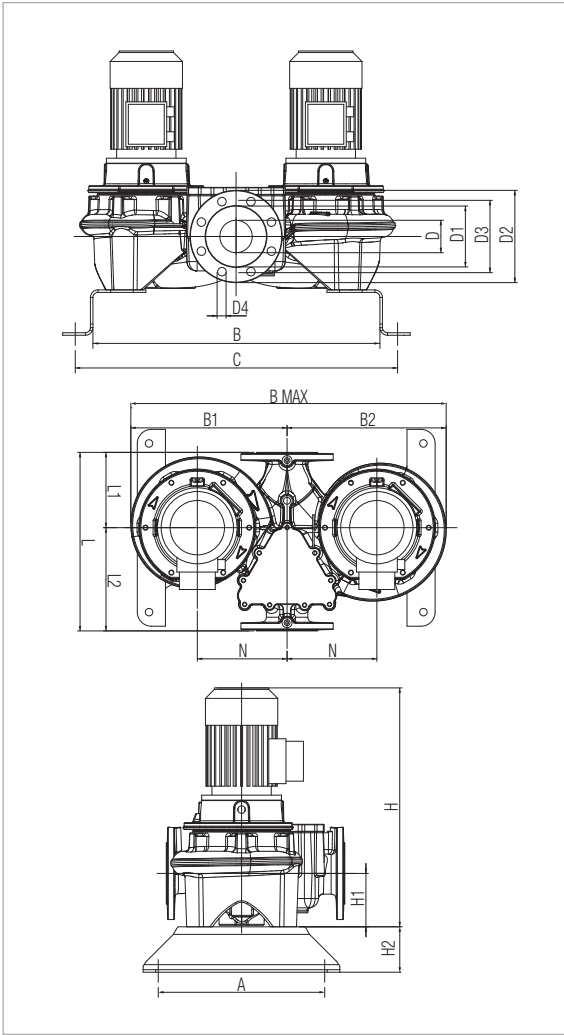
MODEL	CENTRE DISTANCE	PUMP CONNECTIONS	ELECTRICAL DATA									
			POWER INPUT 50 Hz	n r.p.m.	P1 MAX KW	P2 NOMINAL		In A		MOTOR TYPE	MOTOR SIZE	I st. A
						kW	HP	230 V	400 V			
DCM-G 125-3200/A/BAQE/18,5	800	DN 125	3 x 400 V ~ ¹	1471	17,9	18,5	25	-	34,3	IE3	MEC 180M	268,6
DCM-G 125-3600/A/BAQE/22	800	DN 125	3 x 400 V ~ ¹	1470	22,4	22	30	-	40,2	IE3	MEC 180L	336,1
DCM-G 125-4022/A/BAQE/30	800	DN 125	3 x 400 V ~ ¹	1478	26,5	30	40	-	53,7	IE3	MEC 200L	460,1

¹ star start-up possible (A)

MODEL	A	B	B1	B2	B max	C	D	D1	D2	D3	D4	no. of holes	H	H1	H2	L	L1	L2	M	N	PACKING DIMENSIONS			VOL. (m ³)	WEIGHT Kg
																					L/A	L/B	H		
DCM-G 125-3200/A/BAQE/18,5	500	810	555	571	1126	930	125	185	250	210	14	8	1128	215	100	800	316	484	M16	300	800	1126	1128	1,02	888
DCM-G 125-3600/A/BAQE/22	500	810	555	571	1126	930	125	185	250	210	14		1166	215	100	800	316	484	M16	300	800	1126	1166	1,05	933
DCM-G 125-4022/A/BAQE/30	500	810	555	571	1126	930	125	185	250	210	14		1196	215	100	800	316	484	M16	300	800	1126	1186	1,07	1073

DCM-G 150 4 POLES - IN-LINE PUMPS

Pumped liquid temperature range: from -10 °C to +140 °C - Maximum ambient temperature: +40 °C



The performance curves are based on kinematic viscosity values = 1 mm²/s and density equal to 1000 kg/m³. Curve tolerance according to ISO 9906.

For the MEI index refer to the hydraulic data of the individual pump.

MODEL	CENTRE DISTANCE	PUMP CONNECTIONS	ELECTRICAL DATA									
			POWER INPUT 50 Hz	n r.p.m.	P1 MAX KW	P2 NOMINAL		In A		MOTOR TYPE	MOTOR SIZE	I st. A
						KW	HP	230 V	400 V			
DCM-G 150-955/A/BAQE/5,5	800	DN 150	3 x 400 V ~ ¹	1462	7,5	5,5	7,5	-	10,6	IE3	MEC 132S	92,2
DCM-G 150-1322/A/BAQE/7,5	800	DN 150	3 x 400 V ~ ¹	1464	8,9	7,5	10	-	14,4	IE3	MEC 132M	124,1
DCM-G 150-1600/A/BAQE/11	800	DN 150	3 x 400 V ~ ¹	1473	13	11	15	-	22,4	IE3	MEC 160M	172,2
DCM-G 150-1950/A/BAQE/15	800	DN 150	3 x 400 V ~ ¹	1472	17,5	15	20	-	30,5	IE3	MEC 160L	232,4
DCM-G 150-2200/A/BAQE/18,5	800	DN 150	3 x 400 V ~ ¹	1472	21,1	18,5	25	-	34,3	IE3	MEC 180M	268,6
DCM-G 150-2405/A/BAQE/22	800	DN 150	3 x 400 V ~ ¹	1470	23,8	22	30	-	40,2	IE3	MEC 180L	336,1

¹ star start-up possible (A)

MODEL	A	B	B1	B2	B max	C	D	D1	D2	D3	D4	no. of holes	H	H1	H2	L	L1	L2	M	N	PACKING DIMENSIONS			VOL. (m ³)	WEIGHT Kg
																					L/A	L/B	H		
																					DCM-G 150-955/A/ BAQE/5,5	500	805		
DCM-G 150-1322/A/ BAQE/7,5	500	805	550	580	1130	925	150	210	285	240	22	8	963	215	100	800	296	504	M16	300	800	1130	956	0,86	662
DCM-G 150-1600/A/ BAQE/11	500	805	550	580	1130	925	150	210	285	240	22	8	1061	215	100	800	296	504	M16	300	800	1130	1061	0,96	688
DCM-G 150-1950/A/ BAQE/15	500	805	550	580	1130	925	150	210	285	240	22	8	1104	215	100	800	296	504	M16	300	800	1130	1116	1,01	788
DCM-G 150-2200/A/ BAQE/18,5	500	805	550	580	1130	925	150	210	285	240	22	8	1136	215	100	800	296	504	M16	300	800	1130	1136	1,03	796
DCM-G 150-2405/A/ BAQE/22	500	805	550	580	1130	925	150	210	285	240	22	8	1174	215	100	800	296	504	M16	300	800	1130	1174	1,06	930