

DTRON 3

SUBMERSIBLE PUMPS



TECHNICAL DATA

Maximum flow rate: 7,2 m³/h

Maximum head: 45 m

Maximum submerged depth: 12 m

Type of liquid pumped: clean, free of solids and abrasive substances, non-viscous, non-aggressive, non-crystallized, and chemically neutral

Free passage: 2 mm

Minimum suction level: 110 mm

Minimum remaining water level: 35 mm

Liquid temperature range: +0°C to +50°C

Max. ambient temperature: <0°C / +50°C

Maximum working depth: 15 m

Factory-set cut-in: 2,4 bar (+ 0,2)

Flanged or threaded outlet connections: 1 1/4" thread

Maximum pump diameter: 185 mm

Impeller material of construction:

technopolymer/AISI304 stainless steel

Maximum number of starts per hour: 60/h

Suitable for continuous duty: yes

Pump protection rating: IP 68

Motor thermal insulation class: F

Power cable: 15 m with plug

Power supply type: 230 V 50 Hz

Possible mounting positions: fixed, horizontal or vertical. Submerged or semi-submerged. Pumps can be installed both on the surface and in a flooded suction arrangement, either vertically or horizontally. In addition, with the DOC68 accessory (supplied separately), the pump can be installed outside the tank.

Special versions available on request:

Version with X kit to avoid pumping directly from the bottom of wells and tanks. Drinking water-compatible version certified to WRAS, ACS, NSF 61 and 372. Surface version (requires DOC68 accessory)

Certifications: WRAS, ACS, NSF 61 and 372 (only models designed to handle drinking water)



DTron3 is a 7" electronic multistage clean water submersible pump designed for use in wells, tanks or pools. It can be used fully submerged, partially submerged or surface mounted (using the relevant accessory). It is suitable for pressure boosting, rainwater reuse, and gardening and irrigation purposes in domestic and residential settings. The pump can be installed horizontally. The pump employs PLC (Power-Line Communication) technology, which allows it to communicate with the Com Box, which comes as standard issue. It can be paired with an identical pump for operation in twin mode, with one pump used as a back-up: the pump runs automatically if the main pump fails. The X version comes with a 1" fitting and the X kit comprising a 1-metre suction pipe and a float to stop impurities from being sucked in from the bottom. The whole pump is rated IP68: with the DOC68 accessory (supplied separately), it becomes a surface pump for flooded suction use. Version certified for use with drinking water is available on request.

PUMP DESIGN FEATURES

Technopolymer pump casing for corrosion and oxidation resistance. Built-in non-return valve. Built-in debris strainer. Pressure relief valve to cope with frozen pipes and protect against water hammer. There is a bleed valve on the pump casing to help with priming at the commissioning stage or in the event the tank/well is emptied, as well as a technopolymer carry handle. Built-in 0,04-litre pressure vessel in a maintenance-free or recharge version, sized to prevent the pump cycling if there is a minor leak and to serve as a buffer against water hammer. The coupling of the three technopolymer impellers with the floating and stationary wear rings — both of which are made from stainless steel — results in little wear on the hydraulics. Suction lift can be adjusted using the relevant accessory: 3,5 - 4 - 6 or 8 cm.

MOTOR DESIGN FEATURES

Submersible asynchronous motor cooled by the liquid being pumped. AISI 303 stainless steel motor shaft on hydraulic side. Double mechanical seal running in an oil chamber, thus giving the pump a watertight seal. Start capacitor and motor thermal overload protection both built in. Quick-connect/release cable for ease of installation inside pools or tanks. Power cord tug-proof connection.

ELECTRONICS FEATURES

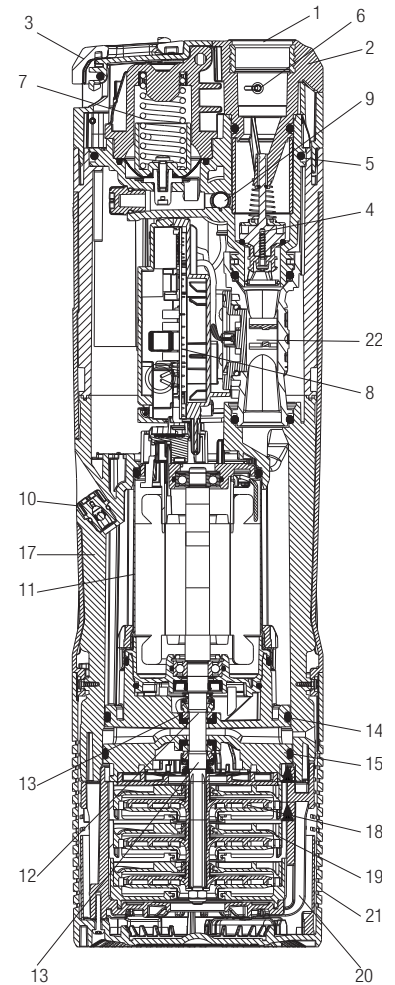
Electronic operation enables the pump to start and switch off on its own based on system demand and protects against dry running. NFC housing for use of a float sensor (supplied separately), which can be connected without having to open up the pump, thus maintaining the watertight seal. Employing PLC (Power-Line Communication) technology, the pump transmits data via the power cable to the Com Box (included), which can be used to set cut-in pressure in the 1,5 to 3,5 bar range and to monitor alarms. The ANTI-CYCLING protection feature kicks in if there are minor leaks in the system. DConnect Box 2 available as an accessory. With DAB's digital solutions, you can monitor and manage system pressure, alarms and the amount of water remaining in the tank directly on your smartphone or tablet, wherever you are.

DTRON 3

SUBMERSIBLE PUMPS

MATERIALS

No.	PARTS	MATERIALS
1	INSERT	BRASS
2	COVER	TECHNOPOLYMER
3	HANDLE	TECHNOPOLYMER
4	NON-RETURN VALVE	TECHNOPOLYMER/NBR/FERRITE/AISI302
5	O-RING	NBR
6	PRESSURE RELIEF VALVE	TECHNOPOLYMER/BRASS
7	SPRING AND DIAPHRAGM TANK	TECHNOPOLYMER/AISI304/EPDM70
8	PCB/CAPACITOR	--
9	PRESSURE SENSOR	TECHNOPOLYMER/BRASS
10	BLEED VALVE	TECHNOPOLYMER/AISI420/NBR
11	MOTOR JACKET	AISI 304
12	MOTOR SHAFT	AISI 303
13	DOUBLE MECHANICAL SEAL	RESIN-IMPREGNATED CARBON/AISI304/AISI302/NBR
14	O-RING	NBR
15	O-RING	NBR
17	MOTOR HOUSING	TECHNOPOLYMER
18	IMPELLER	TECHNOPOLYMER/AISI304
19	DIFFUSER	TECHNOPOLYMER
20	PUMP CASING	TECHNOPOLYMER
21	FILTER	TECHNOPOLYMER
22	FLOW SENSOR	TECHNOPOLYMER



DTRON 3

SUBMERSIBLE PUMPS

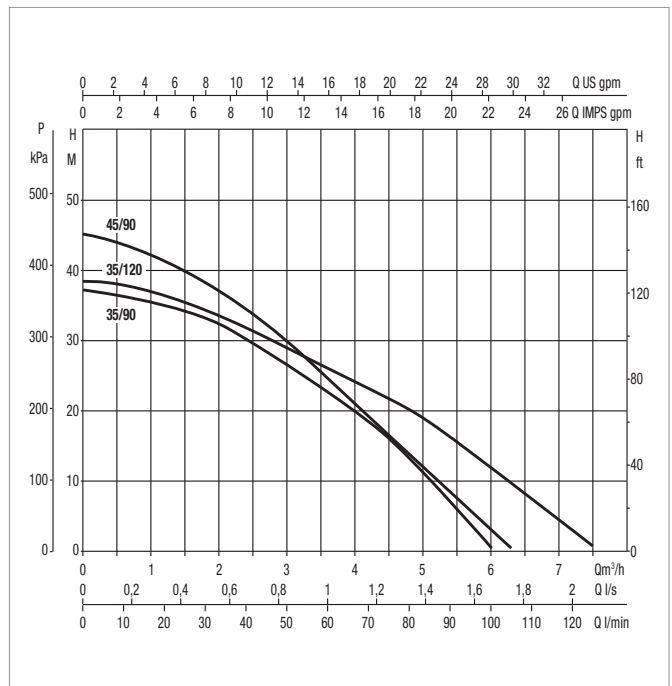
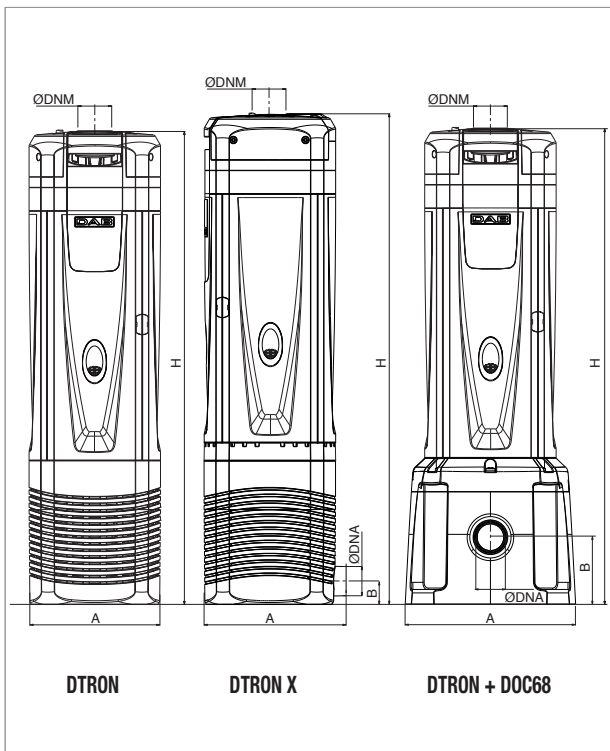
PERFORMANCE AT 50 Hz

MODEL	ELECTRICAL DATA		HYDRAULIC DATA															
	P2 RATED		Q=m³/h	0	0,7	1,2	1,8	2,4	3	3,6	4,2	4,8	5,4	6	6,3	6,6	7,3	7,5
	kW	HP	Q=l/min	0	11	20	30	40	50	60	70	80	90	100	105	110	122	125
DTRON3 35/90	0,52	0,7	H (m)	37,0	35,9	35,0	33,0	30,0	26,7	22,7	18,5	13,4	7,6	0,6				
DTRON3 45/90	0,6	0,8		45,0	43,0	41,2	38,0	34,2	29,7	24,7	20,0	15,0	9,0	2,5	0,6			
DTRON3 35/120	0,6	0,8		38,0	37,6	36,3	34,0	31,5	28,9	26,0	23,2	20,0	16,3	12,0	9,8	7,5	2,2	0,7
DTRON3 X 35/90	0,52	0,7		37,0	35,9	35,0	33,0	30,0	26,7	22,7	18,5	13,4	7,6	0,6				
DTRON3 X 45/90	0,6	0,8		45,0	43,0	41,2	38,0	34,2	29,7	24,7	20,0	15,0	9,0	2,5	0,6			
DTRON3 X 35/120	0,6	0,8		38,0	37,6	36,3	34,0	31,5	28,9	26,0	23,2	20,0	16,3	12,0	9,8	7,5	2,2	0,7
DTRON3 35/90 + DOC 68	0,52	0,7		37,0	35,9	35,0	33,0	30,0	26,7	22,7	18,5	13,4	7,6	0,6				
DTRON3 45/90 + DOC 68	0,6	0,8		45,0	43,0	41,2	38,0	34,2	29,7	24,7	20,0	15,0	9,0	2,5	0,6			
DTRON3 35/120 + DOC 68	0,6	0,8		38,0	37,6	36,3	34,0	31,5	28,9	26,0	23,2	20,0	16,3	12,0	9,8	7,5	2,2	0,7

ELECTRICAL DATA AND DIMENSIONS

MODEL	ELECTRICAL DATA					A	B	H	Ø DN (D)	Ø DN (S)	PACKAGING DIMENSIONS			PACKAGING VOLUME m³	QTY / PALLET	WEIGHT kg
	POWER SUPPLY 50 Hz	P1 kW	P2 RATED		In A						L/A	L/B	H			
			kW	HP												
DTRON3 35/90	1 x 220-240 V ~	0,75	0,52	0,7	3,4	185	-	651	1" 1/4	-	780	230	300	0,05382	15	11,6
DTRON3 45/90	1 x 220-240 V ~	0,93	0,6	0,8	4,2	185	-	651	1" 1/4	-	780	230	300	0,05382	15	11,6
DTRON3 35/120	1 x 220-240 V ~	0,9	0,6	0,8	4	185	-	651	1" 1/4	-	780	230	300	0,05382	15	11,6
DTRON3 X 35/90	1 x 220-240 V ~	0,75	0,52	0,7	3,4	195	32	676	1" 1/4	1"	780	230	300	0,05382	15	11,7
DTRON3 X 45/90	1 x 220-240 V ~	0,93	0,6	0,8	4,2	195	32	676	1" 1/4	1"	780	230	300	0,05382	15	11,7
DTRON3 X 35/120	1 x 220-240 V ~	0,9	0,6	0,8	4	195	32	676	1" 1/4	1"	780	230	300	0,05382	15	11,7
DTRON3 35/90 + DOC 68	1 x 220-240 V ~	0,75	0,52	0,7	3,4	235	92	658	1" 1/4	1" 1/4	382*	306*	178*	0,0208*	30*	3*
DTRON3 45/90 + DOC 68	1 x 220-240 V ~	0,93	0,6	0,8	4,2	235	92	658	1" 1/4	1" 1/4	382*	306*	178*	0,0208*	30*	3*
DTRON3 35/120 + DOC 68	1 x 220-240 V ~	0,9	0,6	0,8	4	235	92	658	1" 1/4	1" 1/4	382*	306*	178*	0,0208*	30*	3*

*Data only apply for DOC68 accessory



The performance curves are based on kinematic viscosity values = 1 mm²/s and a density of 1000 kg/m³. Curve tolerance to ISO 9906.

60216937 - 03/2026