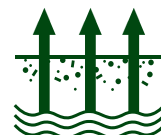




DTRON

THE EVOLUTION
OF SUBMERSIBLE
PUMPS



DAB[®]
MAKING WATER EASY

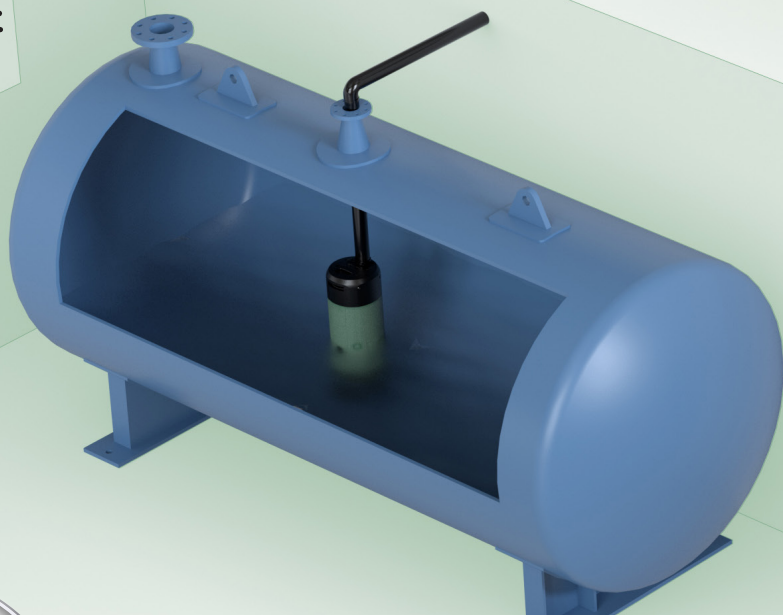
DTRON

**2 MODELS AND A SET OF ACCESSORIES GUARANTEE
THE VERSATILITY OF A COMPLETE RANGE**

📍 **tank installation**



STANDARD VERSION



DTron is DAB's new line of electronic on/off submersible pumps for water pressurization in residential environments. Two models, the DTron 2 and DTron 3, together with a set of fully integrated and modular accessories, represent a choice of solutions for all uses in disparate types of installations.



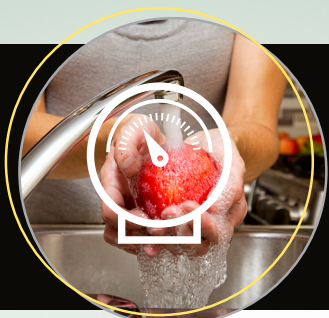
VISIT THE SITE
DTRON.DABPUMPS.COM

DRY VERSION

📍 surface installation

📍 well installation

X VERSION



WATER BOOSTING



GARDENING & IRRIGATION



RAIN WATER REUSE



GROUND WATER

DTron

VALUE MADE TO MEASURE

For DAB, it is essential to create solutions that can meet the real needs of everyone who works in the sector.

The new DTron submersible pumps guarantee benefits for installers, distributors and end users, helping them to save space, energy, time and money thanks to DAB's technical and technological expertise.

Important, constant and rapid evolution is possible only by listening to and acting on the feedback of our best experts on the market: you.



BENEFITS FOR:



INSTALLERS

THE VALUE OF SIMPLICITY

"When I visit a customer's premises, I want to be able to perform quick and simple installation and, therefore, assemble products that are reliable and easy to handle."



END USER

ADVANTAGEOUS TO USE

"I want a sturdy and dependable product that offers peace of mind and does not require maintenance, occupies little space and ensures silent operation"



DISTRIBUTORS AND RETAILERS

EASY TO SELL

"I have sold DAB pumps for 20 years now because I know I can tell my customers they are unique, simple and efficient to use, and a real advantage for me is that I can offer a vast range of products with a minimal number of codes"

LISTENING AROUND THE WORLD

We handle the movement of water throughout the world, installing over 2 million pumps a year while also resolving specially identified requirements.

In Australia, where the forces of nature can never be ignored, operation of our products is put sorely to the test by insects and small reptiles that crawl into the pumps to make their nests. Based on this experience, DAB designed the new models of the DTron range to make them resistant to all external agents, resolving the problem we had encountered in Australia and thereby making our products even more secure in all geographical areas of the world.



DTRON

NEW RANGE

EXPERIENCE AND INNOVATION

43 years of experience. An unstoppable drive for innovation. A constant communication with all markets. This is the ecosystem in which DAB's products are created and evolve.

The Dtron series is evidence of this: **an important step towards redefining the characteristics of submersible pumps**, in the safe hands of a market leader.

DTron 2 and DTron 3 were born out of a desire to create a range of pumps that could be "easy" but also extremely efficient. Technologically advanced but easy to use.

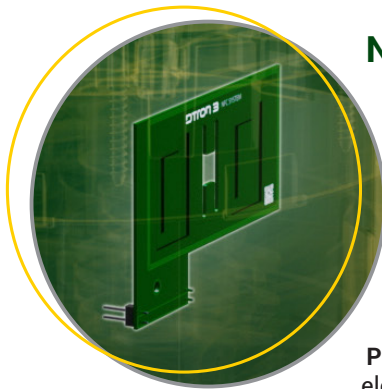
Reliable and high performing in disparate applications, thanks also to a set of smart accessories.

INTEGRATED VESSEL

Quick and simple installation. A system more streamline and compact. Greater and more constant reliability over time.

The expansion vessel improves the airtightness of the system, prevents it from restarting unnecessarily, provides protection against hammering effects and extends the life of the pump.

This integrated component clearly allows for quicker installation.



NFC AND PLC TECHNOLOGIES

Simple and constant control of the pump. Maximum ease and autonomy of installation of the accessories.

NFC (Near Field Communication) permits use of pumps with float switch and water level measurement* without the need for any additional wiring.

The accessories can be attached and do not therefore require removal of the pump body. All this guarantees speed and reliability.

PLC* (Power Line Communication) permits use of the Com Box electronic control device not through any physical connection but via the power input line.

*Only for DTron 3

D+CONNECT

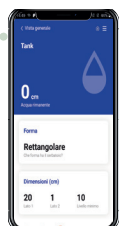


The DConnect Box 2 allows access to the DAB cloud service. With the new App, you can manage and monitor the pressure of the system, the alarms and the residual availability of water in the tank directly from your smartphone or tablet, wherever you may be!

DTron 3 is, in this way, the first submersible pump to have a display.



DCONNECT BOX 2





DOC68

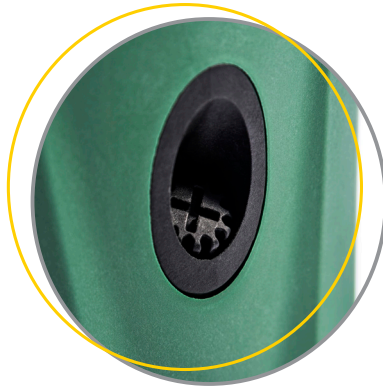
Maximum flexibility of installation. Maximum impermeability. Maximum resistance.

With this accessory and IP68 certification, the BTron pumps can be installed even out of water and used, therefore, like real traditional booster pumps.

BLEEDING VALVE

Benefits during installation and all use.

The bleeding valve permits immediate priming upon initial installation and guarantees correct operation of the pump at all times.



SIMPLER MAINTENANCE

Modular and functional construction.

The modular components of the pump make it easier to perform maintenance. The parts can be removed, repaired and replaced separately, simplifying the resolution of any issues and reducing maintenance costs.

COM BOX

Only for DTron 3

More convenient. Smarter.

The Com Box allows you to change the pump's pressure settings and view any alarms.

No direct connections with the pump (PLC) are required.



DTRON

ACCESSORIES

The accessories of the DTron redefine the very concept of the range, **since it is possible to perform installation in different operating environments with just two models.**



KIT X (For X version)

Combined to X version can be used to collect water at such a level as to avoid the pumping of dust and mud found at the bottom of wells and tanks.



DOC68

The DOC68 permits installation of the DTron even outdoors as an IP68 certified surface pump.



FLOAT

Detects the level of water in a tank, preventing emptying of the latter and seizing of the pump avoiding the dry running, due to too low a level of water.





WATER LEVEL MEASUREMENT

Connected to the DConnect Box 2, controls the level of water in the tank and notifies the user of the level via an App (only for DTron 3).

COM BOX

Allows you to change the starting and stopping pressure and to check any alarms triggered by the pump, in an easy and intuitive manner (standard for DTron 3).



DCONNECT BOX 2

The DConnect Box 2 allows you to check the pump, set the starting and stopping parameters, view the details of alarms and monitor the pressure directly on your smartphone, while ensuring unprecedented performance and less maintenance than ever before (only for DTron 3).



SELECTION TABLE



DTRON 2

DTRON 3

	MAXIMUM NUMBER OF FLOORS	WATER PRESSURIZATION			IRRIGATION
		SMALL APARTMENT with 1 bathroom (6 taps)	MEDIUM APARTMENT with 2 bathrooms (10 taps)	LARGE APARTMENT with 2 bathrooms + garden (15 taps)	STATIC SPRINKLERS RANGE 4 m Flow rate: 6 l/min Operating pressure: 2.4 bar
		MAXIMUM NUMBER OF APARTMENTS			MAXIMUM NUMBER OF SPRINKLERS
DTRON 2	1	3	1	1	9
DTRON 3	2	2	1	0	
35/90	3	1	0	0	
DTRON 2	1	3	1	1	10
DTRON 3	2	2	1	1	
45/90	3	2	1	0	
	4	1	0	0	
DTRON 2	1	3	2	1	12
DTRON 3	2	2	1	1	
35/120	3	2	1	0	

* The table is indicative and based on average values. To ensure optimal sizing, perform a careful assessment of the specific system.

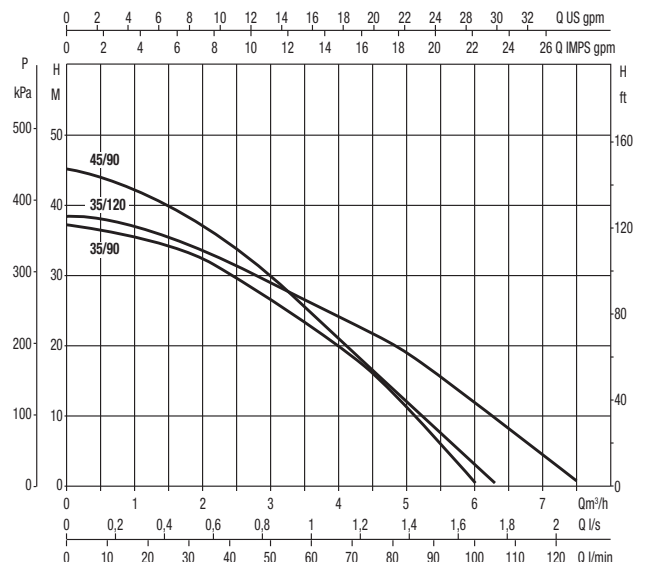
DTRON 2	DTRON 3	
•	•	Integrated expansion vessel
•	•	Kit x
•	•	Float
•	•	Water level measurement
•	•	Doc68
•	•	Com Box
•	•	DConnect box 2
•	•	IP68
•	•	Carry handle
•	•	Resistance to high and low temperatures
•	•	Certified for drinking water*

* CERTIFICATIONS



TECHNICAL DATA

MAXIMUM FLOW RATE	up to 7.5 m ³ /h
MAXIMUM HEAD	up to 45 m
P1	up to 1 Kw
P2 NOMINAL	up to 0,67 Kw (0,9 HP)
MAXIMUM IMMERSION DEPTH	7 to 12 m
MAX AMBIENT AND LIQUID TEMPERATURE	+50 °C
FACTORY CUT-IN	2.4 bar (±0.2)
DELIVERY FLANGE OR THREAD	threaded from 1" 1/4
PUMP MAXIMUM DIAMETER	185 mm.
DIMENSIONS	DTron 2: 611x185 mm. DTron 3: 651x185 mm.





DAB PUMPS LTD.
Unit 6 Gilberd Court
Newcomen Way, Severalls Park
CO4 9WN
Colchester
ordersuk@dwtgroup.com
Tel. +44 0333 777 5010



DAB PUMPS IBERICA S.L.
Calle Verano 18-20-22
28850 - Torrejón de Ardoz - Madrid
Spain
Info.spain@dwtgroup.com
Tel. +34 91 6569545



DAB PUMPS DE MÉXICO, S.A. DE C.V.
Av Amsterdam 101 Local 4
Col. Hipódromo Condesa,
Del. Cuauhtémoc CP 06170
Ciudad de México
Tel. +52 55 553 2621



DAB PUMPS BV
'tHofveld 6 C1
1702 Groot Bijgaarden - Belgium
info.belgium@dwtgroup.com
Tel. +32 2 4668353



DAB PUMPS HUNGARY KFT.
H-8800
Nagykanizsa, Buda Ernő u.5
Hungary
Tel. +36 93501700



DAB PUMPS SOUTH AFRICA (PTY) LTD
Twenty One industrial Estate,
16 Purlin Street, Unit B, Warehouse 4
Olifantsfontein -1667 - South Africa
info.sa@dwtgroup.com
Tel. +27 12 361 3997



DAB PUMPS B.V.
Statenlaan, 4
5223 LA, 's-Hertogenbosch
Nederland
info.nl@dabpumps.com
Tel. +31 416 387280



DAB PUMPS POLAND Sp. z o.o.
Ul. Cieślowskich 35K
03-017 Warszawa - Poland
sprzedaz@dabpumps.com.pl



DAB PUMPS (QINGDAO) CO. LTD.
No.10 Xindong Road
Jiulong Town,
Jiaozhou City
266319 Qingdao (Shandong) - China
sales.cn@dwtgroup.com
Tel. +86 400 186 8280



DAB PUMPS FRANCE SAS
Tour Ariane, Paris la Défense 9
5, Place de la Pyramide
92800 Puteaux - France
info.fr@dabpumps.com
Tel. +33 (0)6 79 63 05 46
+33 (0)7 89 01 53 35



DAB PUMPS INC.
3226 Benchmark Drive
Ladson, SC 29456 - USA
info.usa@dwtgroup.com
Tel. 1- 843-797-5002
Fax 1-843-797-3366



DAB PUMPS OCEANIA PTY LTD
426 South Gippsland Highway,
Dandenong South VIC 3175 - Australia
info.oceania@dwtgroup.com
Tel. +61 1300 378 677



DAB PUMPS GMBH
Am Nordpark 3
D - 41069 Mönchengladbach - Germany
info.germany@dwtgroup.com
Tel. +49 2161 47388-0
Fax +49 2161 47388-36



DAB PUMPS CANADA INC.
333 Bay Street, Suite 4600, Toronto,
Ontario, M5H 2S5, - Canada
orders@dwtgroup.ca
Tel. 1-833-322-7867



PT DAB PUMPS INDONESIA
Satrio Tower lantai 26
unit C-D, Jl. Prof. Dr. Satrio Kav. C4,
Kel. Kuningan Timur, Kec. Setiabudi, Kota Adm.
Jakarta Selatan, Prov. DKI Jakarta. - Indonesia
Tel. +62 2129222850