



WHEN THE GOING
GETS TOUGH...





THE TEAM THAT ALWAYS SCORES.

Five completely innovative solutions for waste water; five answers to your needs.





**RESIDENTIAL
BUILDING
SERVICE**



**COMMERCIAL
BUILDING
SERVICE**



**INDUSTRIAL
SERVICE**



**AGRICULTURE
SERVICE**

THE NEW **FX** LINE IS DESIGNED FOR LIFTING AND TRANSFER
OF DOMESTIC, CIVIL AND INDUSTRIAL WASTE WATER

- Suitable for pumping stations for lifting and transfer of sewage and drain water from residential or public buildings
- Suitable for the draining of car parks, garages, roads below ground level and environments prone to flooding.
- Suitable for the transfer of sewage water from industrial processes.
- Suitable for the disposal of wastewater or for protection against flooding in agricultural complexes.



DRAINAGE



EFFLUENT



SEWAGE



**THE NEW RANGE FOR
SPECIALISTS IN WASTE WATER**



DAB



A WIDE RANGE OF SOLUTIONS



DRENAG FX

Draining pumps with rubber coverings that limit wear due to the presence of sand or abrasive particles. **Suitable for draining environments prone to flooding where high head is necessary.**

GRINDER FX

Pumps with a high resistance stainless steel grinder system **suitable for the transfer of sewage water at high pressure or when narrow piping is needed to keep down system installation costs.**



FEKA FXC

Pumps with anti-clogging channel impeller. **Suitable for drainage and the transfer of effluent and sewage water, containing solids up to 50mm with reduced long fibre content.**

Tested in the most complex scenarios that involve the draining of sewage water, the new FX range comprises **5 lines certified for waste water** according to standard EN 12050.

FX

NEW MODELS



FEKA FXV

Pump with patented super vortex impeller increase performance without compromising the ability to work in the presence of large solids and long fibres, guaranteeing a completely free passage.

NEW



FEKA FXS

Non-clog screw impeller pump for impressive hydraulic efficiency. **Suitable for lifting and transferring wastewater and sewage** in residential and commercial building service; for wastewater city tanks; **for draining underground streets or structures**. **In agricultural complexes is suitable for disposal of wastewater and for protection against flooding.**





A STRONGER AND ROBUST RANGE



ABSOLUTE RELIABILITY AND DURABILITY

Design was carried out with absolute reliability and strength in mind.

The double silicon carbide mechanical seals are entirely enclosed in the oil chamber to avoid direct contact with the pumped liquid.

The high standards of construction, including the motor shaft in anti-corrosion stainless steel AISI 304, the external cataphoresis and two-component coating and the resin sealed cable gland, guarantee the long life of the range.

The new FX range also comes with new motors more compact than ever, sized to guarantee high resistance to clogging and consistent performance.

The new FXS version is a great option in a variety of situations, offering a combination of reliable efficiency and good free passage. Its optimized design mean minimal dimensions size, quick positioning and easy access to the main components, all with controlled consumption.

CERTIFIED RELIABILITY



GOOD PERFORMANCE AND COMPLIANCE

FX range is compliant with waste water standards EN 12050 in order to meet the most stringent quality standards.

They are also available with ATEX certification



COMPACT MOTORS



DESIGNED TO INCREASE PERFORMANCE AND REDUCE RISKS

The new, compact motors are designed to increase the starting torque and reduce the risk of clogging. Now more efficient than ever, they allow the FX pumps to run even when not fully submerged to permit complete emptying of the tanks.

SAFETY AND COMPETITIVENESS



OFFERING THE RIGHT SOLUTION TO EACH NEED

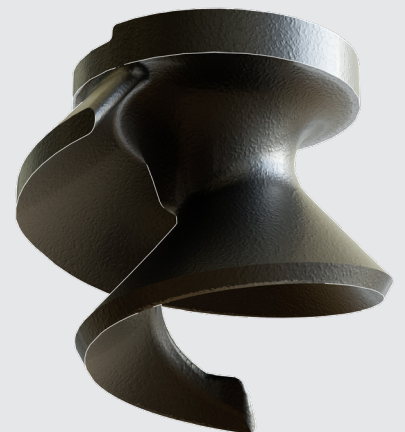
The **non-clog screw-type impeller** has been optimized for impressive hydraulic efficiency to deliver worry-free service. Together with its compactness, reduced dimensions and optimised consumption, it makes FXS the ideal product for highly competitive projects and tenders.

QUICK AND SIMPLE MAINTENANCE



DESIGNING FOR PUMPS' CARE

The pumps in the FX range have a structure with three levels for quick access to all the main components, greatly facilitating maintenance. The spare parts have also been unified and made universal for the entire range.



The 'DAB' logo in a green-bordered box.

HIGH EFFICIENCY, DOUBLE THE SAVINGS

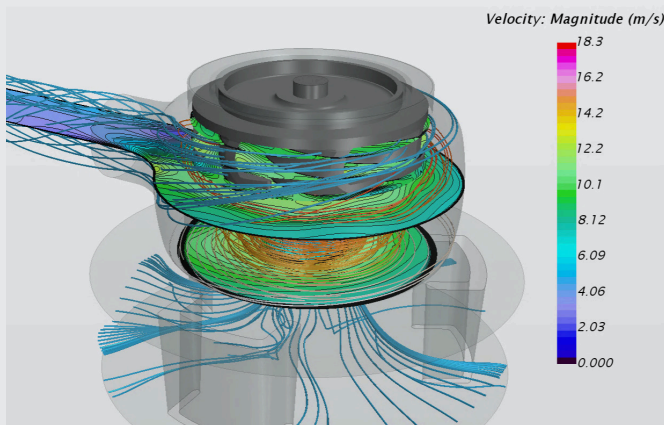


CFD ANALYSIS AND THE BENEFITS

The FX range tackles the issue of efficiency from every point of view.

Advanced research into computational fluid dynamic analysis (CFD) has allowed us to improve performance in terms of efficiency and increase the capacity to manage sewage water.

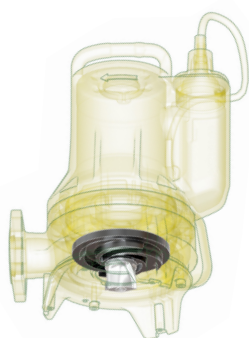
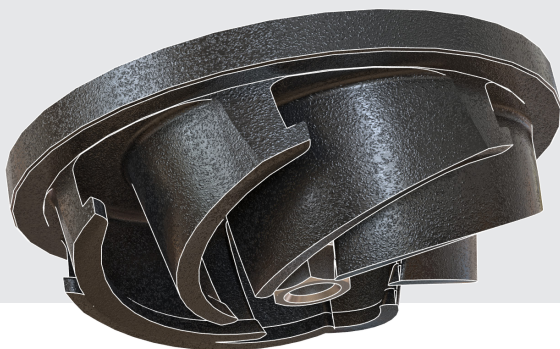
The FX range comes with high energy efficient motors that permit lower power ratings, these guarantee the same performance as a more powerful pump.



SUPER VORTEX, AN EXCLUSIVE DAB PATENT

GREAT NEWS. GREATER VALUE.

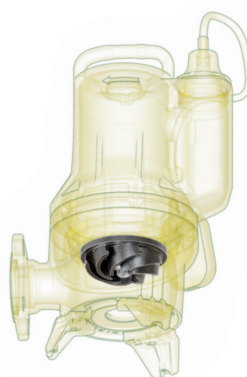
The Super Vortex impeller it's a great step beyond in pumps evolution: completely redesigned on the basis of research into computational fluid dynamics, it improves on the performance of the FEKA FXV pumps under all conditions, reducing motor consumption while still offering the benefit of a free passage the same size as the pump's delivery port (50 and 65 mm).



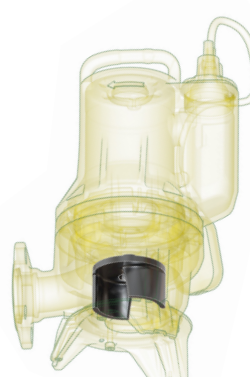
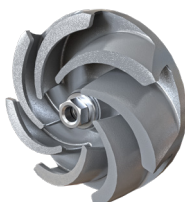
GRINDER **FX**



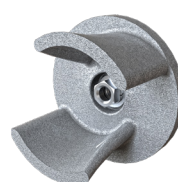
DRENAG **FX**



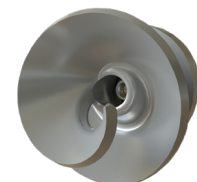
FEKA **FXV**



FEKA **FXC**



FEKA **FXS**





A SAFE AND EASY PASSAGE



EASY TO INSTALL AND SUITABLE FOR REPLACEMENT

The new FX range is available with accessories to make the replacement of old models and system upgrades as easy as possible. The reduced overall size, complete with threaded flange connection, makes installation even simpler.





AT YOUR SERVICE THROUGHOUT THE COUNTRY

A TEAM AT YOUR COMPLETE DISPOSAL

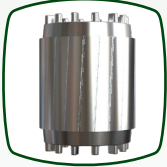
Thanks to its production capacity and our service network, DAB can guarantee the availability of the FX range throughout the whole of world.

DAB



SUBMERSIBLE PUMPS

MAIN CHARACTERISTICS



1 - Compact motors with high starting torques to reduce the clogging



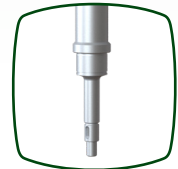
2 - Double mechanical seal in the oil chamber complete protected from the pumped liquid



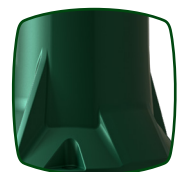
3 - Anti-leakage resin sealed cable gland with fast connections



5 - Condenser compartment easy to access for inspection and maintenance



6 - Anti-corrosion stainless steel motors shaft. AISI 304



7 - Cataphoresis and two-component coating to guarantee high resistance

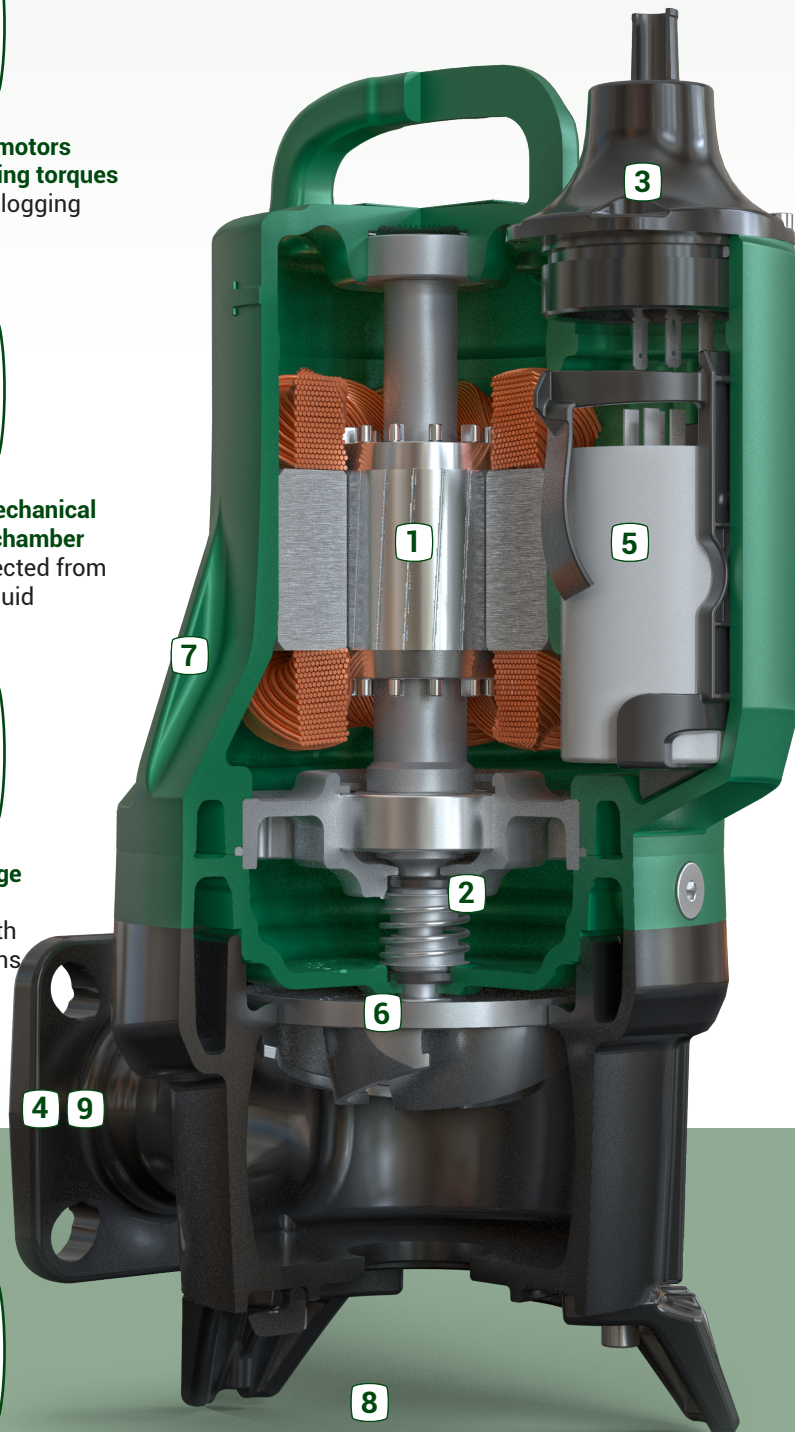


4 - Delivery port both threaded and flanged to increase the flexibility

9 - DN65 and DN80 delivery port for versatility in projects, and for easy substitutions.



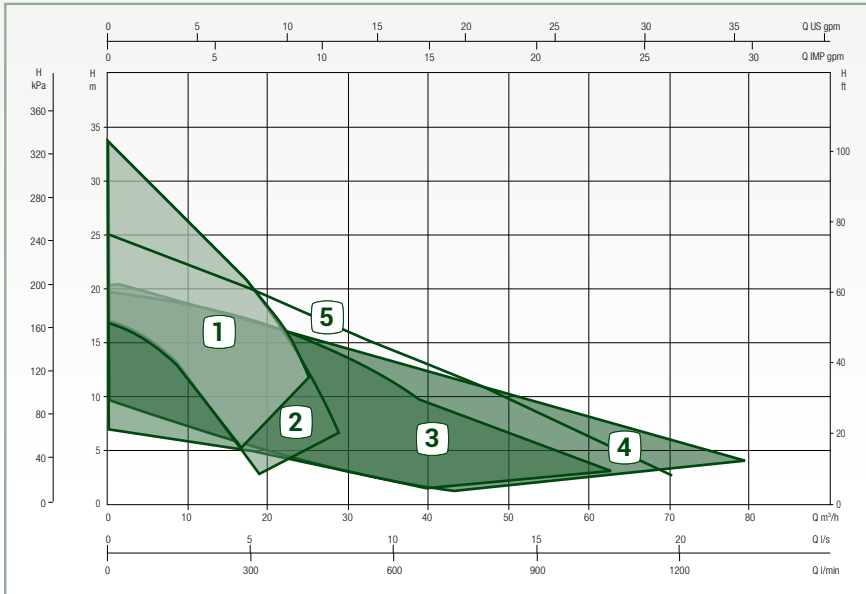
8 - Rubber disc for increasing stability for the pump in mobile installations



EXTENSIVE RANGE

HIGH PERFORMANCE

DAB is able to offer the most extensive range of submersible pumps on the market, with flow rates of up to 72 m³/h and heads up to 33 metres.



1 GRINDER **FX**

2 DRENAG **FX**

3 FEKA **FXV**

4 FEKA **FXC**

5 FEKA **FXS**

TECHNICAL DATA

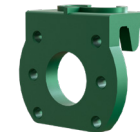
MODEL	P2 [KW]	OUTLET	FREE PASSAGE	H MAX [m]	Q MAX [l/min]
FEKA FXS	3	DN65 / DN80	50 mm	25	1200
FEKA FXV	0.7 - 2.2	2" /DN50 / DN65	50 - 65 mm	18.5	900
FEKA FXC	1.5 - 2.2	2" /DN50 / DN65	50 mm	19	1200
GRINDER FX	0.7 - 2.2	1" ½ /DN 32 /DN40	TRITURATORE	33	320
DRENAG FX	0.7 - 2.2	1" ½ /DN 32 /DN40	10 mm	32	510

ACCESSORIES

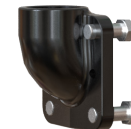


NGPANEL

The next generation control panel to manage drainage and filling pumps



FLANGE FOR REPLACEMENT

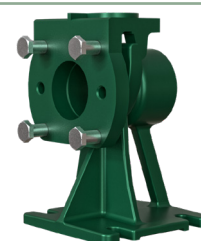


90° ATTACHMENT



FEKABOX - FEKAFOS

Tanks for the collection and redirection to the sewer network of domestic waste water (sewage and draining water), for basements and garages, for one or more dwellings, when the sewer network cannot be reached due to gravity issues.



COUPLING FOOT



ngpanel

CONTROL AND PROTECTION AT FIRST SIGHT

NgPanel is an electronic control panel designed to manage and protect 1 or 2 pumps in wastewater lifting stations for commercial and residential buildings.

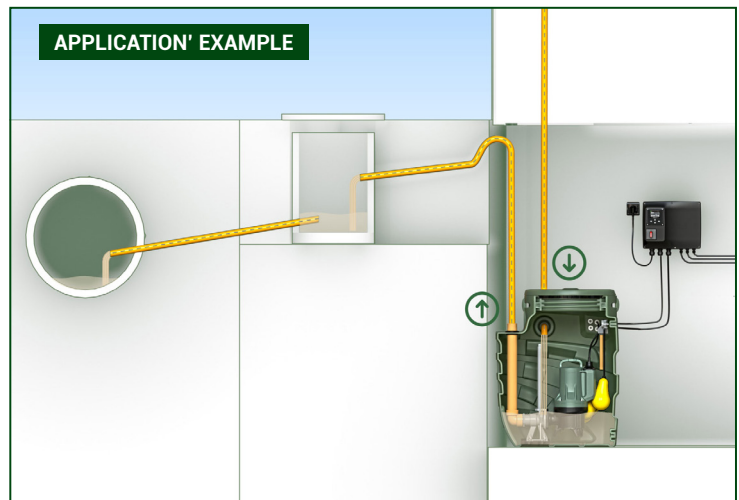
Ideal for filling and emptying operations, monitor water levels in tanks or wells in real time, control the pumps' automatic starting and stopping, provide thermal overload protection for the motor, and give the option of controlling the system's operation remotely.

With a certified IP55 protection rating, it withstands the ingress of dust and water, so it can even be installed outdoors, where there is no direct and complete exposure to bad weather and sunlight.

And when it comes to upgrading obsolete pumping systems, NgPanel is the most intelligent control panel in the market.



APPLICATION' EXAMPLE



DAB SMART SYSTEM

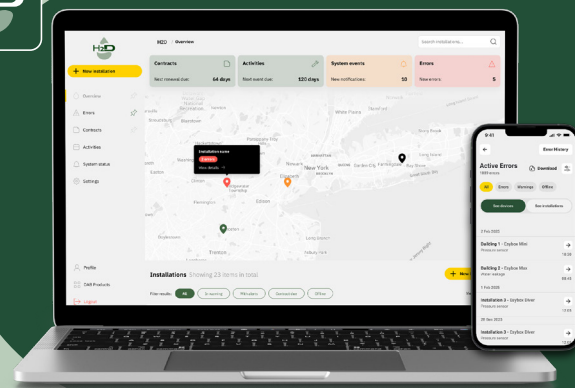
When it comes to system safety and control, being able to monitor installation status ahead of time and in the best possible way is simply a must. This is why DAB has created a panel that is already a generation ahead: NgPanel is not just a protection and control panel, it is the hardware component of a fully-fledged smart system, the technological product of over 40 years' experience in the wastewater handling sector.

Used in conjunction with DAB Virtual Cockpit and H₂D, it takes user experience to the next level, providing pump control from any location, optimising the relevant procedure, which becomes extremely simple, intuitive and effective: this means fast setup, direct status monitoring, and immediate alarm warnings on screen.

Connected to the internet, NgPanel harnesses all its potential for increasingly flexible, smarter system control.



DISCOVER MORE





DAB PUMPS LTD.
Unit 6 Gilberd Court
Newcomen Way, Severalls Park
CO4 9WN
Colchester
ordersuk@dwtgroup.com
Tel. +44 0333 777 5010



DAB PUMPS IBERICA S.L.
Calle Verano 18-20-22
28850 - Torrejón de Ardoz - Madrid
Spain
Info.spain@dwtgroup.com
Tel. +34 91 6569545



DAB PUMPS DE MÉXICO, S.A. DE C.V.
Av Amsterdam 101 Local 4
Col. Hipódromo Condasa,
Del. Cuauhtémoc CP 06170
Ciudad de México
Tel. +52 55 553 2621



DAB PUMPS BV
'tHofveld 6 C1
1702 Groot Bijgaarden -
Belgium
info.belgium@dwtgroup.com
Tel. +32 2 4668353



DAB PUMPS HUNGARY KFT.
H-8800
Nagykanizsa, Buda Ernő u.5
Hungary
Tel. +36 93501700



DAB PUMPS SOUTH AFRICA (PTY) LTD
Twenty One industrial Estate,
16 Purlin Street, Unit B, Warehouse 4
Olifantsfontein -1667 - South Africa
info.sa@dwtgroup.com
Tel. +27 12 361 3997



DAB PUMPS B.V.
Statenlaan, 4
5223 LA, 's-Hertogenbosch
Nederland
info.nl@dabpumps.com
Tel. +31 416 387280



DAB PUMPS POLAND Sp. z o.o.
Ul. Cieslewskich 35K
03-017 Warszawa - Poland
sprzedaz@dabpumps.com.pl



DAB PUMPS (QINGDAO) CO. LTD.
No.10 Xindong Road
Jiulong Town,
Jiaozhou City
266319 Qingdao (Shandong) - China
sales.cn@dwtgroup.com
Tel. +86 400 186 8280



DAB PUMPS FRANCE SAS
Tour Ariane, Paris la Défense 9
5, Place de la Pyramide
92800 Puteaux - France
info.fr@dabpumps.com
Tel. +33 (0)6 79 63 05 46
+33 (0)7 89 01 53 35



DAB PUMPS INC.
3226 Benchmark Drive
Ladson, SC 29456 - USA
info.usa@dwtgroup.com
Tel. 1- 843-797-5002
Fax 1-843-797-3366



DAB PUMPS OCEANIA PTY LTD
426 South Gippsland Highway,
Dandenong South VIC 3175 - Australia
info.oceania@dwtgroup.com
Tel. +61 1300 378 677



DAB PUMPS GMBH
Am Nordpark 3
D - 41069 Mönchengladbach - Germany
info.germany@dwtgroup.com
Tel. +49 2161 47388-0
Fax +49 2161 47388-36



DAB PUMPS CANADA INC.
333 Bay Street, Suite 4600,
Toronto, Ontario, M5H 2S5, -
Canada
orders@dwtgroup.ca
Tel. 1-833-322-7867



PT DAB PUMPS INDONESIA
Satrio Tower lantai 26
unit C-D, Jl. Prof. Dr. Satrio Kav. C4,
Kel. Kuningan Timur, Kec. Setiabudi,
Kota Adm.
Jakarta Selatan, Prov. DKI Jakarta. -
Indonesia
Tel. +62 2129222850