

NOVA UP MAE

SUBMERSIBLE PUMPS FOR CLEAR WATER



TECHNICAL DATA

Pumped liquid: clear and rainwater.
Free passage: 10 mm.
Operating range: from 1 to 15 m³/h with head up to 10 metres.
Liquid temperature range: 0°C to +35°C for domestic use; 0°C to +50°C for other uses.
Outlet: threaded 1 1/4" gas.
Delivery direction: vertical.
Impeller: open in technopolymer.
Maximum immersion: 7 metres.
Possible installation types: fixed or portable in vertical position.
Minimum height of suction:
 NOVA UP 300 M-AE 60 mm
 NOVA UP 600 M-AE 70 mm
Protection class: IP 68.
Insulation class: F.

APPLICATIONS

The vertical delivery draining submersible pump is suitable for domestic automatically operated fixed applications, for draining basements and garages that are subject to flooding. This version is particularly suited for narrow well installation requiring automatic suction up to 2/3 m. Thanks to its compact, easy to handle shape, it may also be used as a portable pump for emergencies, such as lifting water from tanks or rivers, emptying swimming pools, fountains, excavations, and pedestrian subways. It is also ideal for gardening, and hobby applications in general. This pump can be used with liquids containing solid particles of up to 10 mm in size. The electronic level selector allows fixed installation, ensuring automatic operation, and enabling the selection of the level of the liquid for automatic start. With removable filter, it is capable of suction of up to a minimum of 2/3 mm (filter removed).

CONSTRUCTION FEATURES OF THE PUMP

Hydro resistant technopolymer pump body, cover, and suction grid.
 Stainless steel motor, rotor shaft, and bolts and screws.
 Threefold seal with interposed rings with oil pre-chamber.

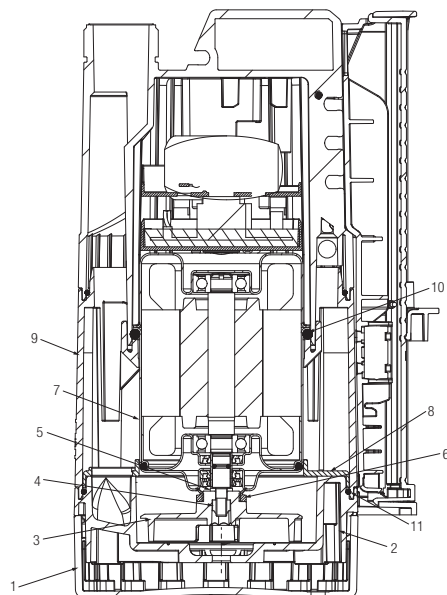
CONSTRUCTION FEATURES OF THE MOTOR

Submersible type continuous duty asynchronous motor.
 Stator enclosed in airtight stainless steel casing, with an outer cover that protects the wiring and the capacitor. Rotor running on permanently lubricated ball bearings, oversized to ensure low noise and durability. Built-in thermal-amperometric protection and permanently connected capacitor.

MATERIALS

No.	PARTS*	MATERIALS
1	SUCTION STRAINER	TECHNOPOLYMER
2	BASE	TECHNOPOLYMER
3	IMPELLER	TECHNOPOLYMER
4	NUT	A2 DIN982-UNI7473 STAINLESS STEEL
5	WASHER	A2 STAINLESS STEEL
6	V. RING	NBR
7	MOTOR	CASE AISI 304 STAINLESS STEEL X5 CrNi 1810 - UNI 6900/71
		ROTOR SHAFT AISI 416 STAINLESS STEEL UNI EN 10088-1 X12CRS13
8	DIAPHRAGM	TECHNOPOLYMER
9	BODY	TECHNOPOLYMER
10 - 11	OR RING	NBR

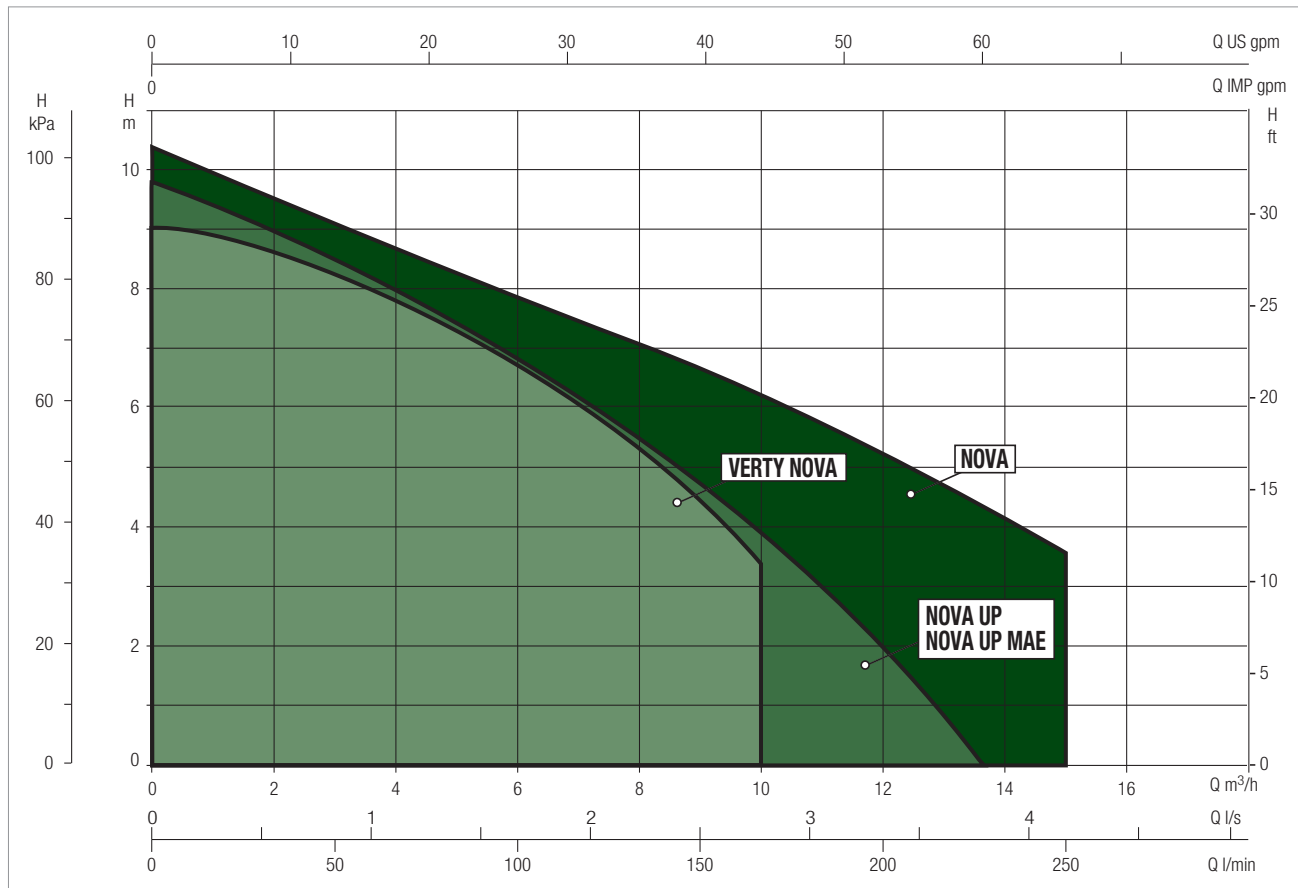
* In contact with the liquid



PERFORMANCE RANGE

The performance curves are based on kinematic viscosity values = 1 mm²/s and density equal to 1000 kg/m³. Curve tolerance according to ISO 9906.

GRAPHIC SELECTION TABLE

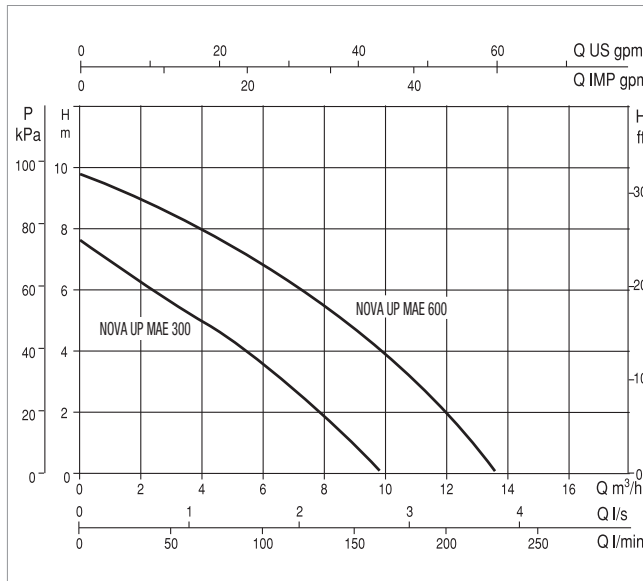
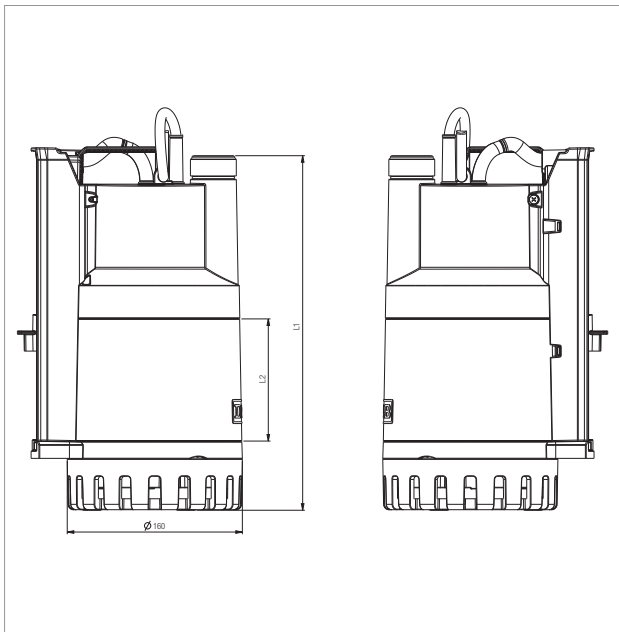


SELECTION TABLE - NOVA UP MAE

MODEL	Q=m ³ /h	0	1	2	3	4,5	5	6	7	7,5	9	10	12	13,5
	Q=l/min	0	16,6	33,3	50	75	83,3	100	116,6	125	150	166,6	200	225
NOVA UP 300 M-AE	H	7,6	6,9	6,25	5,6	4,7	4,4	3,6	2,8	2,3	1			
NOVA UP 600 M-AE	H (m)	9,8	9,4	9	8,5	7,7	7,4	6,8	6,2	5,9	4,7	3,9	2	0,3

NOVA UP MAE - CLEAN WATER DRAINING SUBMERSIBLE PUMPS FOR DOMESTIC USE

Liquid temperature range: From 0°C to +35°C for domestic use, from 0°C to +50°C for other uses.



The performance curves are based on kinematic viscosity values = 1 mm²/s and density equal to 1000 kg/m³. Curve tolerance according to ISO 9906.

MODEL	ELECTRICAL DATA				
	POWER INPUT 50 Hz	P1 MAX kW	P2 NOMINAL		In A
			kW	HP	
NOVA UP 300 M-AE	1 x 220 - 240V ~	0,38	0,21	0,28	1,5
NOVA UP 600 M-AE	1 x 220 - 240V ~	0,77	0,52	0,69	3,5

MODEL	L1	L2	DNM GAS	PACKING DIMENSIONS			CABLE	VOLUME (mc)	WEIGHT Kg
				L/A	L/B	H			
NOVA UP 300 M-AE	296,2	75,9	1" ^{1/4}	265	225	317	10 mt.	0,018	5,6
NOVA UP 600 M-AE	324	111,6	1" ^{1/4}	265	225	352	10 mt.	0,021	7,3